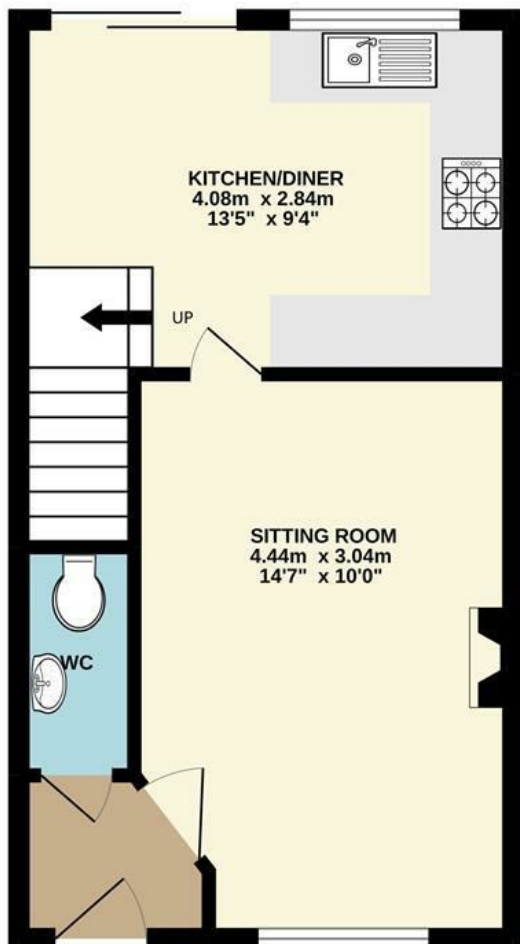




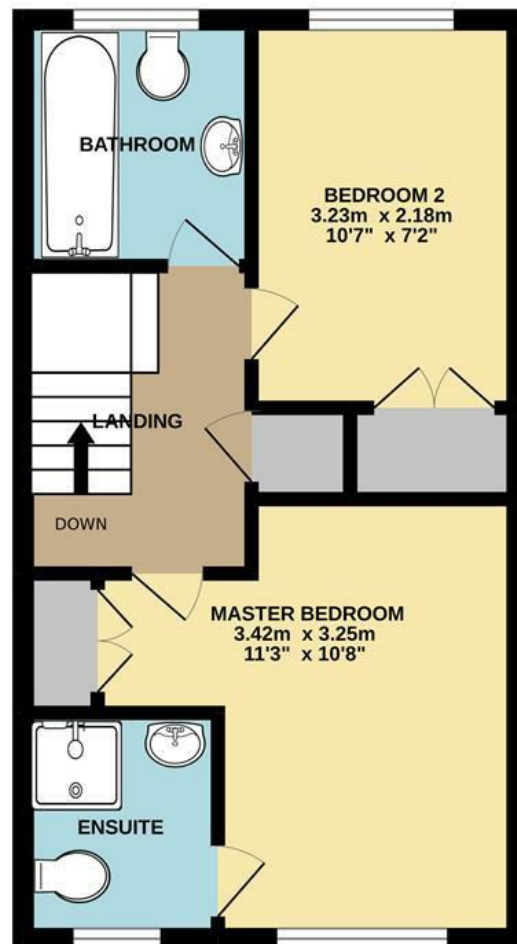
Pishmire Close | Norwich | NR5
 Guide Price £200,000

abbotFox

GROUND FLOOR



1ST FLOOR



Energy Efficiency Rating		
	Current	Potential
Very energy efficient - lower running costs		
(92 plus) A		
(81-91) B		
(69-80) C		
(55-68) D		
(39-54) E		
(21-38) F		
(1-20) G		
Not energy efficient - higher running costs		
England & Wales	EU Directive 2002/91/EC	

Disclaimer – In accordance with the Property Misdescriptions Act, the company gives notice that all descriptions, references to condition, necessary permissions for use and other details are given in good faith and believed to be correct, but any intending lessees do not rely on them as statements of fact, but must satisfy themselves by inspection or other means, as to their accuracy.



abbotFox presents this good sized two bedroom semi detached house in a popular residential development close to the Norfolk & Norwich University Hospital and the University of East Anglia.

The accommodation briefly comprises; an entrance hall, kitchen breakfast room, sitting room and ground floor WC.

The first floor provides two generous bedrooms, the principal bedroom featuring an en suite shower room. There is a family bathroom off the landing also.

Outside, there is a fully enclosed rear garden, small front garden and allocated parking.

Guide price - £200,000 - £220,000

