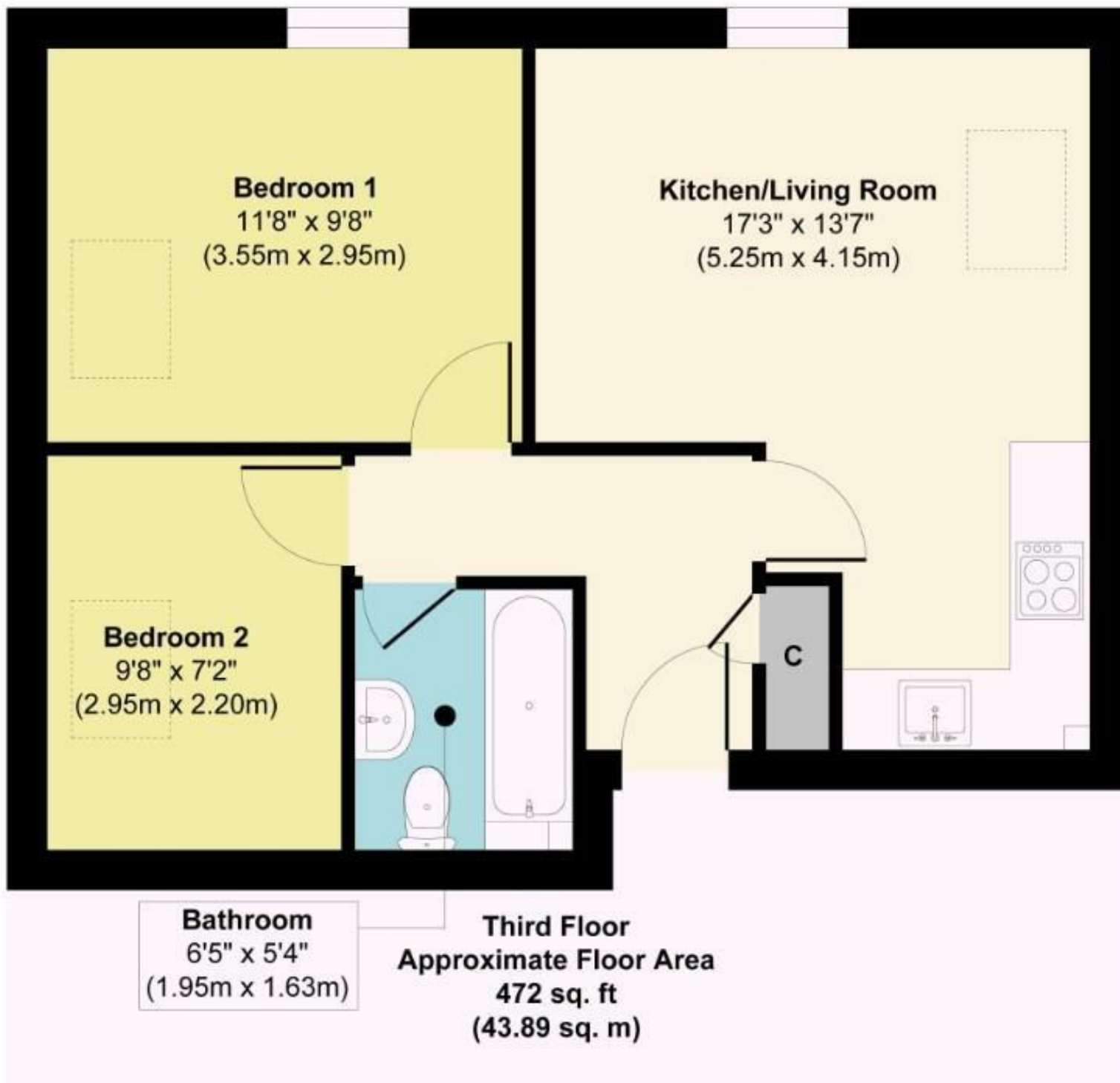




Mill Road | Great Yarmouth | NR31
 £125,000

abbotFox



Energy Efficiency Rating		Current	Potential
Very energy efficient - lower running costs			
(92 plus)	A		
(81-91)	B		
(69-80)	C		
(55-68)	D		
(39-54)	E		
(21-38)	F		
(1-20)	G		
Not energy efficient - higher running costs			
England & Wales		EU Directive 2002/91/EC	

Disclaimer – In accordance with the Property Misdescriptions Act, the company gives notice that all descriptions, references to condition, necessary permissions for use and other details are given in good faith and believed to be correct, but any intending lessees do not rely on them as statements of fact, but must satisfy themselves by inspection or other means, as to their accuracy.



abbotFox Land & New Homes presents this brand new, apartment. Located on the top floor of the popular Bridge Gate Court development, this is an ideal opportunity for any first time buyer or buy-to-let investor. Finished to a high standard throughout, this home offers a sleek and stylish finish throughout. The open plan living accommodation is well complemented by two bedrooms and a shower room. Situated within easy reach of a wealth of local amenities, an internal viewing comes highly recommended.

Agents note: Please be aware the lease length, serviced charges ground rents are to be confirmed.

