

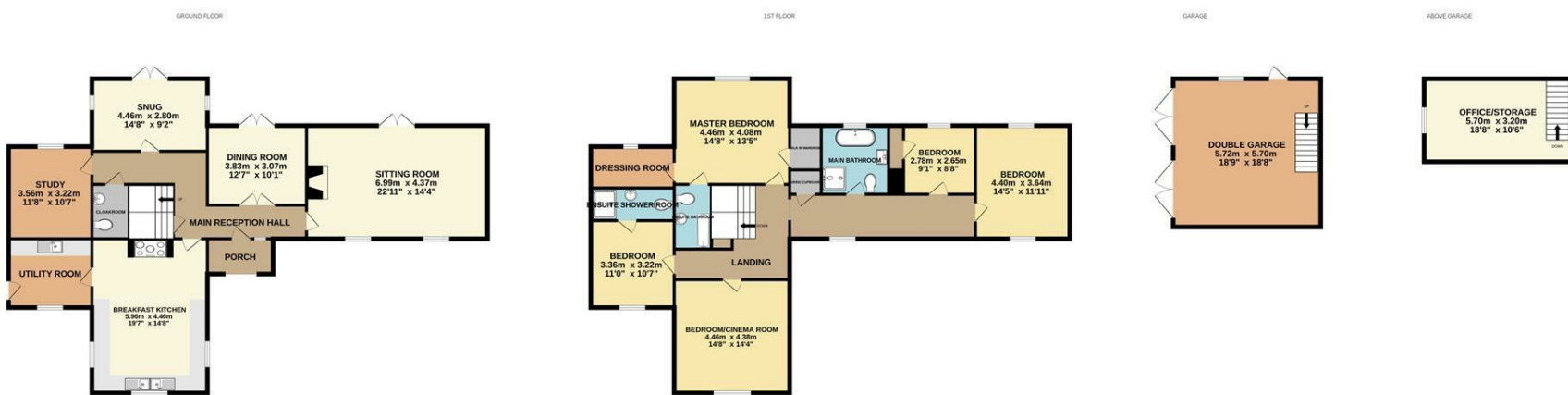


Hillside Mews | Thetford | IP25  
Offers In Excess Of £800,000

abbotFox

Energy Efficiency Rating		
	Current	Potential
Very energy efficient - lower running costs		
(92 plus) <b>A</b>		
(81-91) <b>B</b>		
(69-80) <b>C</b>		
(55-68) <b>D</b>		
(39-54) <b>E</b>		
(21-38) <b>F</b>		
(1-20) <b>G</b>		
Not energy efficient - higher running costs		
<b>England &amp; Wales</b>		EU Directive 2002/91/EC

Disclaimer – In accordance with the Property Misdescriptions Act, the company gives notice that all descriptions, references to condition, necessary permissions for use and other details are given in good faith and believed to be correct, but any intending lessees do not rely on them as statements of fact, but must satisfy themselves by inspection or other means, as to their accuracy.



Whilst every attempt has been made to ensure the accuracy of the floorplan contained here, measurements of doors, windows, rooms and any other items are approximate and no responsibility is taken for any error, omission or mis-statement. This plan is for illustrative purposes only and should be used as such by any prospective purchaser. The services, systems and appliances shown have not been tested and no guarantee as to their operability or efficiency can be given.  
Made with Metropix ©2023





abbotFox Bespoke presents 'Sunnydale', an immaculate and spacious detached home, situated on a 0.8 acre plot(stms) and located in the popular Saham Toney, near Watton.

Situated within a private cul de sac of only four houses. The property offers stunning field views to the rear, sitting on a plot of 0.8 acres that is not overlooked by any neighbouring properties. The garden is mostly laid to lawn and is surprisingly low maintenance considering its size. Also featuring a large pond, summer house and Shepherd's hut the garden is truly unique for a property of this style and age.

The property itself offers very flexible accommodated to the ground floor that would be brilliant for multi generational living. Offering a generous kitchen/diner with utility room, lounge, dining room, snug and office there is plenty of space to entertain within this spacious family home. The first floor consists of five generous bedrooms with one currently being used as an outstanding cinema room, with a family bathroom of the landing and two en-suites.

Viewings are highly advised to appreciate the stunning finish and flexible living space this property has to offer.

Guide price £800,000 - £850,000

