

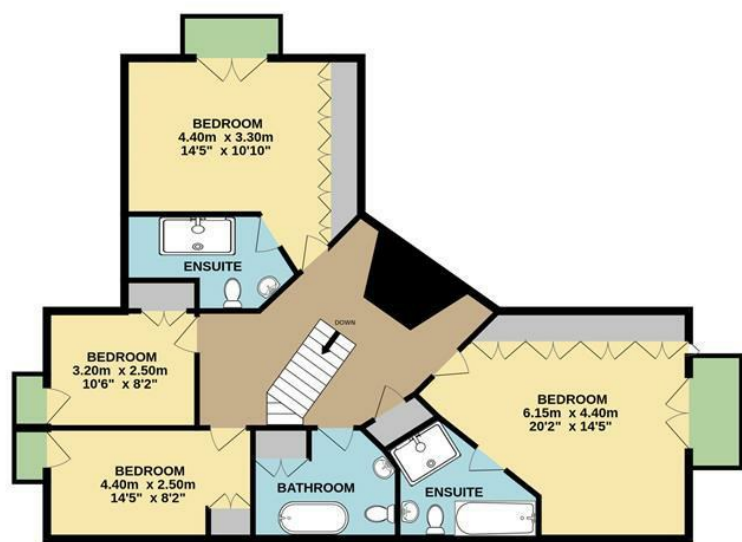


Silver Street | Fleggburgh | NR29  
 Guide Price £900,000

GROUND FLOOR



1ST FLOOR



Energy Efficiency Rating		
	Current	Potential
Very energy efficient - lower running costs		
(92 plus) <b>A</b>		
(81-91) <b>B</b>		
(69-80) <b>C</b>		
(55-68) <b>D</b>		
(39-54) <b>E</b>		
(21-38) <b>F</b>		
(1-20) <b>G</b>		
Not energy efficient - higher running costs		
<b>England &amp; Wales</b>		EU Directive 2002/91/EC

Disclaimer – In accordance with the Property Misdescriptions Act, the company gives notice that all descriptions, references to condition, necessary permissions for use and other details are given in good faith and believed to be correct, but any intending lessees do not rely on them as statements of fact, but must satisfy themselves by inspection or other means, as to their accuracy.

Whilst every attempt has been made to ensure the accuracy of the floorplan contained here, measurements of doors, windows, rooms and any other items are approximate and no responsibility is taken for any error, omission or mis-statement. This plan is for illustrative purposes only and should be used as such by any prospective purchaser. The services, systems and appliances shown have not been tested and no guarantee as to their operability or efficiency can be given.  
 Made with Metropix ©2023



abbotFox Bespoke are delighted to introduce you to 'Fleet House', a masterpiece of architectural design, nestled on an idyllic plot within the sought-after Broadland village of Fleggburgh. With its modern architecture, luxurious features, and enviable location, this extraordinary house must be viewed to be fully appreciated.

As you approach Fleet House, you are immediately captivated by its stunning presence. The sleek lines and contemporary façade effortlessly blend with the picturesque countryside surroundings, creating a harmonious fusion of nature and modernity. The property's immaculately landscaped garden with a large manicured lawn, wild-life pond, vibrant cottage garden style flower beds, and mature trees, provide a serene oasis for relaxation and enjoyment.

Step inside, and you are greeted by an inspiring interior that seamlessly combines opulence and functionality. The grand entrance hall sets the tone for the rest of the home, boasting a striking feature staircase, and an abundance of natural light flooding in through the floor-to-ceiling windows.

The ground floor of Fleet House offers an array of versatile living spaces, perfectly designed to cater to every occasion. The spacious living area is a true highlight, featuring a kitchen breakfast room complete with integral appliances, sleek cabinetry, and a generous central island. The dining area effortlessly flows into the inviting lounge, where a modern fireplace creates a cozy ambiance for intimate gatherings or relaxed evenings in. A study, utility room and shower room complete the ground floor.

The property boasts four generously proportioned bedrooms. The principle suite is a sanctuary of indulgence, featuring a balcony overlooking the gardens, a luxurious en-suite bathroom with a freestanding bathtub, and plenty of fitted storage. The remaining bedrooms are equally impressive, all with their own balconies. There is also another ensuite shower room and a family bathroom.

Fleet House has been thoughtfully designed to seamlessly integrate indoor and outdoor living. The expansive terrace, accessible from the kitchen and living area, is an ideal setting for alfresco dining, entertaining guests, or simply basking in the beauty of the surrounding landscape. To the front, the property boasts plenty of off-road parking and a double garage. There is also a timber out-building which is perfect for storage or could have potential for converting to a home office/studio.

Located in the highly desirable village of Fleggburgh, Fleet House offers the perfect balance between tranquillity and convenience. Surrounded by the breathtaking Norfolk Broads, this idyllic location provides endless opportunities for outdoor pursuits, including boating, fishing, and scenic walks. The village itself boasts a friendly community atmosphere, with local amenities, schools, and excellent transport links just a short distance away.

