







7 VALE COURT

RIPPONDEN | HX6 4HS

Located at the head of a small modern cul-de-sac of just a handful of homes, this beautifully presented four-bedroom detached property offers versatile family accommodation arranged over three floors.

The property enjoys a peaceful setting within easy reach of local amenities, schools, and transport links, while offering a high standard of modern comfort and style.

Boasting an enclosed landscaped rear garden, an integral garage, and off-road parking, this home is perfect for families seeking space, practicality, and contemporary living.



GROUND FLOOR

Entrance Hall
Living Room
Dining Kitchen
Cloakroom / WC
Integral Garage
Utility Area

SECOND FLOOR

Bedroom 3
Jack & Jill Shower Room
Bedroom 4

FIRST FLOOR

Principal Bedroom
Dressing Room
En-suite Shower Room
Bedroom 2
House Bathroom

COUNCIL TAX

F

EPC RATING

B

INTERNAL

The property is accessed via a welcoming entrance hall with underfloor heating extending throughout the ground floor. From here, doors lead to the spacious living room, cloakroom housing a two-piece suite, and the impressive dining kitchen. The bright living room enjoys views of the rear garden and benefits from French doors opening directly onto the patio, ideal for family gatherings or summer entertaining.

The superbly appointed kitchen features sleek quartz worksurfaces, integrated appliances, and a generous dining area. Thoughtfully designed, it includes additional under-stair storage and provides internal access to the integral garage, which incorporates a utility area with plumbing for a washing machine. Both the kitchen and garage also benefit from doors opening onto the enclosed rear garden, allowing for seamless indoor-outdoor living.

From the entrance hall, stairs rise to the first floor landing, which provides access to the luxurious principal bedroom suite, bedroom 2 and the house bathroom. The spacious dual aspect principal bedroom features a dedicated dressing area with extensive fitted wardrobes, together with a stylish en-suite shower room. Bedroom 2 boasts a triple aspect, including a Juliet balcony overlooking the garden, filling the space with natural light. The three-piece house bathroom comprises bath with shower over, concealed cistern WC and basin.

The second floor houses two further well-proportioned double bedrooms, both linked by a modern 'Jack & Jill' shower room comprising large shower cubicle, concealed cistern WC and basin — ideal for children or guests.

EXTERNAL

Externally, the property enjoys a delightful, landscaped rear garden designed for year-round enjoyment. The garden features a combination of paved seating areas, mature planting, and low-maintenance artificial lawns, providing space for relaxation and outdoor dining. The front of the property includes a two-car driveway providing off-road parking and access to the integral garage.

LOCATION

Vale Court is tucked away off Elland Road in a delightful riverside location but within an easy stroll of the centre of Ripponden, which has excellent local amenities including a primary school, health centre, church, a selection of shops, pubs and restaurants, as well as a thriving bowling club and tennis club. There is a regular bus service, mainline train station in nearby Sowerby Bridge and the M62 motorway (J22 and J24) is within 15 minutes' drive allowing speedy access to the motorway network, Manchester and Leeds.

SERVICES

All mains services. Gas central heating, boiler located in garage and Nest controlled heating zones. UPVC double glazing.

TENURE & FEES

Freehold, annual contribution to street lighting £28.55

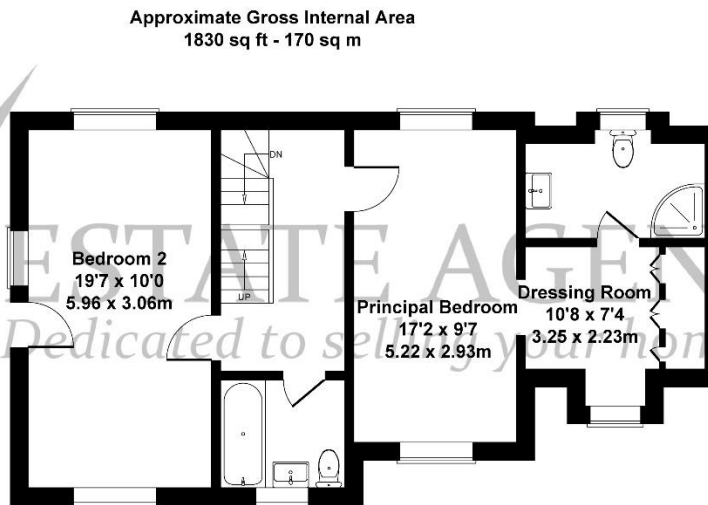
DIRECTIONS

From the centre of Ripponden take the Elland Road towards Barkisland, just before the road starts to go uphill turn right onto Mill Fold Way, continue past the bowling green and recreation ground and the entrance to Vale Court is on the left hand side after the row of stone cottages. The property can be found by following the road to the end of the cul-de-sac and number 7 is straight ahead.

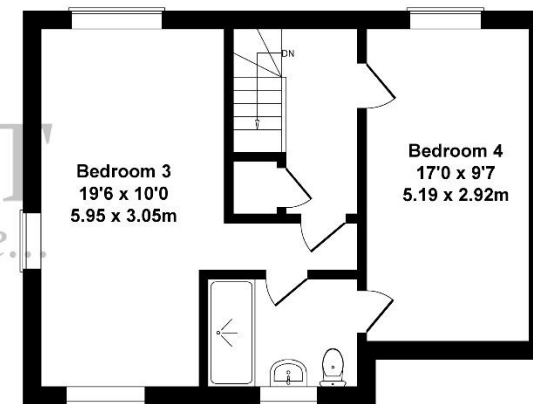




GROUND FLOOR



FIRST FLOOR



SECOND FLOOR

Approximate Gross Internal Area
1830 sq ft - 170 sq m





119a Halifax Road, Ripponden HX6 4DA
 Tel: 01422 822277 Mobile: 07787 521045
 E-mail: ripponden@houses.vg
www.houses.vg

IMPORTANT NOTICE

These particulars are produced in good faith, but are intended to be a general guide only and do not constitute any part of an offer or contract. No person in the employment of VG Estate Agent has any authority to make any representation of warranty whatsoever in relation to the property. Photographs are reproduced for general information only and do not imply that any item is included for sale with the property. All measurements are approximate. Sketch plan not to scale and for identification only. The placement and size of all walls, doors, windows, staircases and fixtures are only approximate and cannot be relied upon as anything other than an illustration for guidance purposes only.

MONEY LAUNDERING REGULATIONS

In order to comply with the 'Money Laundering, Terrorist Financing and Transfer of Funds (Information on the Payer) Regulations 2017', intending purchasers will be asked to produce identification documentation and we would ask for your co-operation in order that there will be no delay in agreeing the sale.