



Church Road

, Nuneaton, CV10 8LD

£640 PCM

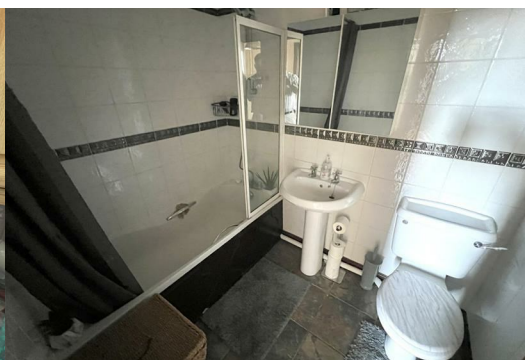


Nestled in the charming area of Stockingford, this delightful flat on Church Road offers a perfect blend of comfort and convenience. Ideal for individuals or couples, the property features a well-appointed bedroom, providing a serene retreat for restful nights. The flat boasts a spacious reception room, perfect for entertaining guests or enjoying quiet evenings at home.

The bathroom is thoughtfully designed, ensuring both functionality and style, catering to your daily needs with ease. The property also includes parking, a valuable asset in this bustling area, allowing for hassle-free access to your home.

With its prime location, residents will benefit from easy access to local amenities, including shops, parks, and public transport links, making it an excellent choice for those seeking a vibrant community atmosphere. This flat presents a wonderful opportunity for anyone looking to embrace a comfortable lifestyle in a well-connected neighbourhood. Don't miss the chance to make this charming property your new home.

No Pets, No smoking. Tax Band A, EPC D.
Property Available immediately



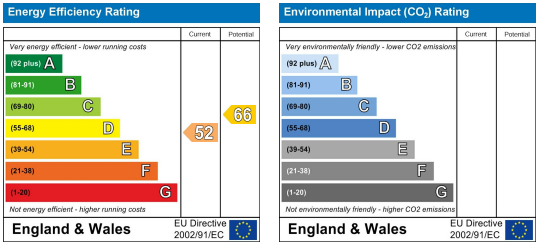
Area Map



Floor Plans



Energy Efficiency Graph



These particulars, whilst believed to be accurate are set out as a general outline only for guidance and do not constitute any part of an offer or contract. Intending purchasers should not rely on them as statements of representation of fact, but must satisfy themselves by inspection or otherwise as to their accuracy. No person in this firms employment has the authority to make or give any representation or warranty in respect of the property.

109 NEW UNION STREET
COVENTRY, CV1 2NT
coventry@pointons-group.com
024 7710 333
Company No: 7359350



BOND GATE CHAMBERS
NUNEATON, CV11 4AL
nuneaton@pointons-group.com
024 7637 3300
Company No: 6743033

74 LONG STREET
ATHERSTONE, CV9 1AU
atherstone@pointons-group.com
01827 711911
Company No: 81323250

www.pointons-group.com

VAT NO 742186125