

LONDON HOUSE, LLANYSTUMDWY
ASKING PRICE £279,950
REFERENCE:



- FOUR BEDROOMS
- END TERRACE
- GAS CENTRAL HEATING

- UPVC DOUBLE GLAZING
- TWO RECEPTION ROOMS
- EPC TBC

DIRECTIONS

From Porthmadog take the A497 road to Criccieth. Go through the village of Criccieth and turn right signposted Llanystumdwy. Go into the village and the property can be found on the left hand side after the pub. Directly opposite Lloyd George's house

Description

An attractive four bedroom end terrace property located in the centre of Llanystumdwy. The property has Upvc double glazing throughout, gas central heating and two sitting rooms. Small garden to rear and on street parking. Viewing highly recommend. EPC TBC

Hallway

Upvc front door. Consumer unit. Radiator. Stairs leading to first floor.

Lounge

Upvc double glazing. Open fire place. Radiator. Fitted carpet.

Lounge Two

Upvc double glazing. Open fire place. Radiator. Fitted carpet. Understairs cupboard. Door leading to kitchen,

Kitchen/Diner

A range of wall and base units with matching worksurfaces, stainless steel sink unit. Washing machine point. Cooker point and fridge point. Upvc double glazing and rear door leading to rear garden.

Hallway

Radiator.

Bedroom One

Upvc double glazing. Radiator. Built in cupboard with loft access hatch.

Bedroom Two

Upvc double glazing. Radiator. Wash hand basin.

Bedroom Three

Upvc double glazing. Radiator.

Bedroom Four

Upvc double glazing. Radiator.

Family Bathroom

Low level WC, wash hand basin, bath with electric shower. Laminated flooring and part tiled walls. Radiator. Upvc double glazing

Outside Area

Small rear garden. On street parking Right of way walk way to the front of the property. Grassy strip at the side of the chapel

Tenure

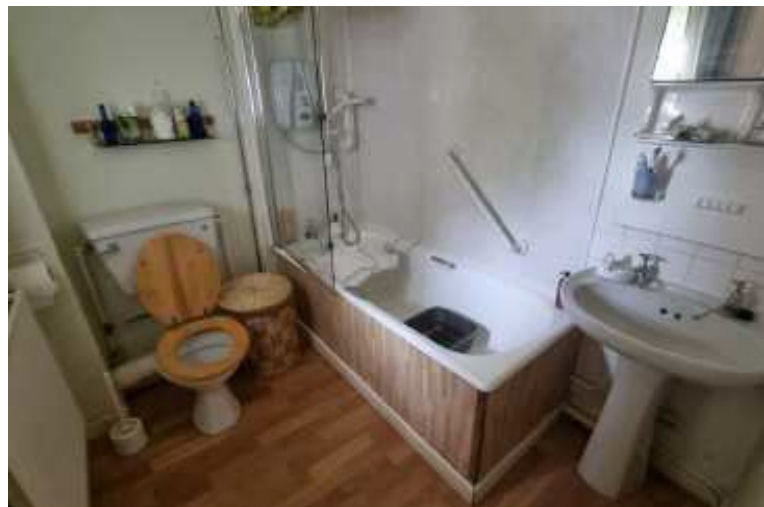
The property is available Freehold. Solicitors to confirm.

Tax Band

The property is believed to be in C.
Information from www.voa.gov.uk

Viewing Arrangements

Please contact the Porthmadog office on: 01766 512 666 or email us at porthmadog@bobparry.info



134 High Street, Porthmadog, Gwynedd, LL49 9NW
01766 512 666 | www.bobparry.info | porthmadog@bobparry.info