



# Inglebys

Estate Agents



## 2C Dundas Street East

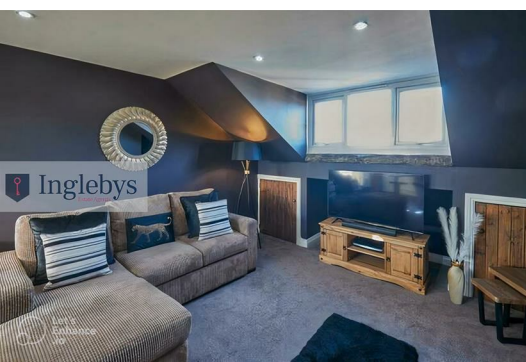
Saltburn By The Sea, TS12 1AH

**£135,000**



A modern, one bedroom, third floor penthouse apartment located in the heart of Saltburn by the Sea.

The apartment is only a short walk from the beach and lower promenade. Take the oldest functioning cliff lift in the UK down to the promenade and you'll arrive at the 208-metre pier which stretches out into the sea. The long sandy shores are overlooked by colourful boutique beach huts and high cliffs tower in the distance



Tenure: Leasehold

EPC Rating: D

Council Tax Band: A

Entrance

Stairs rising to the main apartment floor

Bedroom

Velux window to the front aspect.  
Wall mounted electric heater.

Shower Room

A three piece bathroom suite comprising of a low level WC, hand wash basin/vanity unit and a glass shower cubicle.  
Vinyl flooring.

Open Plan Lounge/ Kitchen

Double glazed windows to the front and back aspects.  
Two under-eaves storage cupboards.  
TV point.  
Telephone point.  
Plumbing for an automatic washing machine.  
A range of fitted wall and base units in white with granite effect roll top work surfaces, with matching breakfast bar and seating.  
Tiled walls.  
Integrated single electric oven with matching hob and stainless steel extractor hood.  
Storage cupboard housing the water tank.

Disclaimer

Please note that all measurements contained in these particulars are for guidance purposes only and should not be relied upon for ordering carpets, furniture, etc. Anyone requiring more accurate measurements may do so by arrangement with our office.

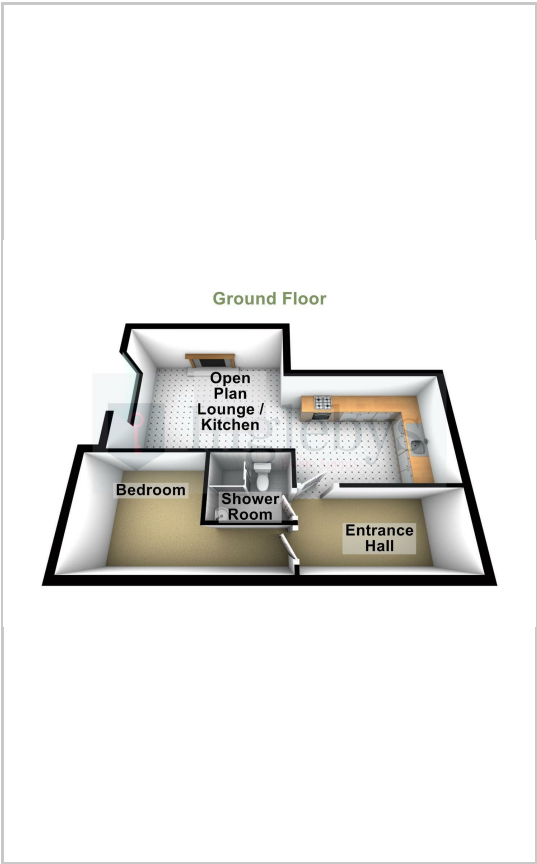
Our description of any appliances and / or services (including any central heating system, alarm systems, etc.) should not be taken as any guarantee that these are in working order. The buyer is therefore advised to obtain verification from their solicitor, surveyor or other qualified persons to check the appliances / services before entering into any commitment.

The tenure details and information supplied within the marketing descriptions above are supplied to us by the vendors. This information should not be relied upon for legal purposes and should be verified by a competent / qualified person prior to entering into any commitment.

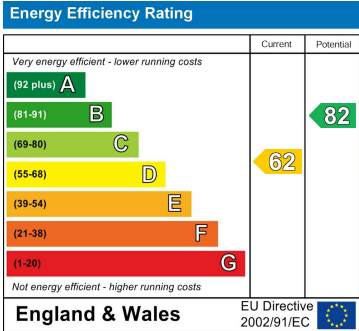
Area Map



Floor Plans



Energy Efficiency Graph



These particulars, whilst believed to be accurate are set out as a general outline only for guidance and do not constitute any part of an offer or contract. Intending purchasers should not rely on them as statements of representation of fact, but must satisfy themselves by inspection or otherwise as to their accuracy. No person in this firms employment has the authority to make or give any representation or warranty in respect of the property.