

# HJC

HIGHER VALUES



## High Street

Thames Ditton, KT7 0SF

Guide Price £650,000

No onward chain. A building of 'special interest' in a Grade II listed cottage row in the centre of Thames Ditton village, Cleves Cottage is thought to date back to the 16th century - an exquisite and inspiring example of its time. This pretty weatherboard-fronted 2/3 bedroom property has an abundance of period features including exposed beams, 'monkey tail' window latches and stout, ironwork-furnished oak doors. Downstairs is a large and welcoming reception room in which the main focal point is a spectacular, restored inglenook fireplace, adjoining is an eat-in country kitchen, behind which is a dining room that opens to a secluded well-stocked courtyard with a pond. Two opposing symmetrical sheds meet to form a walkway through a beautiful west-facing walled garden. Up the stairs from the kitchen is the master bedroom which features a vaulted ceiling, original chestnut wood flooring, a good amount of inbuilt storage and a striking exposed-brick fireplace. The second double bedroom to the rear has built-in storage and the smaller third bedroom to front with built-in oak box bed would also make an ideal nursery or study. Much-loved, well-maintained and restored by its previous owner, Cleves Cottage is now looking for a new custodian for the next chapter of its life. Just a short stroll from shops, station and excellent schools.

- Circa 16th century home
- Secret walled garden
- Remarkable period features
- Two living rooms
- Approaching 1000ft<sup>2</sup>
- Central village location
- Summer house
- 2/3 bedrooms
- Eat-in country kitchen
- Short walk from shops, train links and schools

### Cleves Cottage

Approximate Gross Internal Area = 89 sq m / 958 sq ft  
 Sheds / Summer House = 8 sq m / 86 sq ft

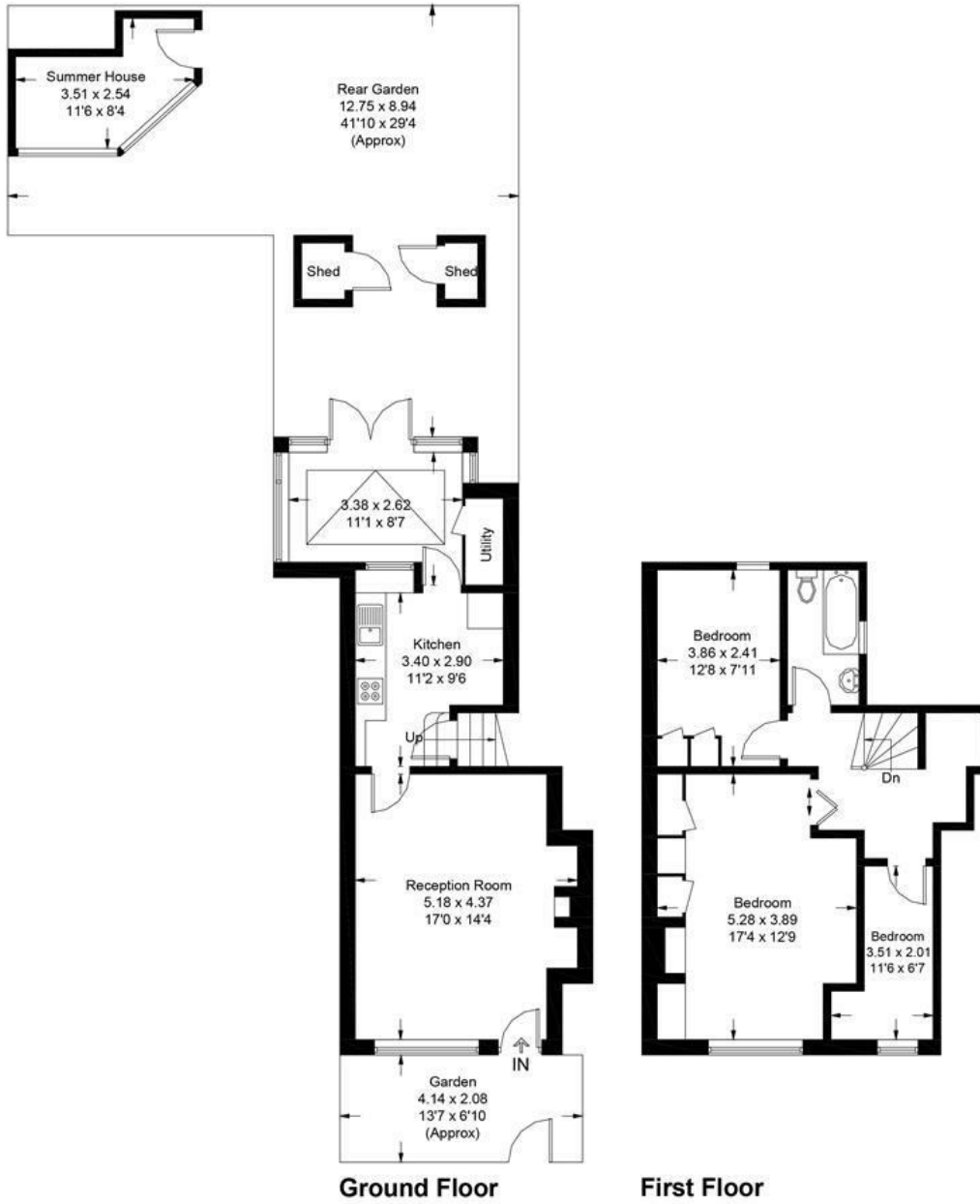
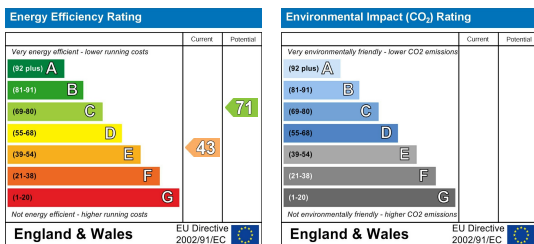


Illustration for identification purposes only, measurements are approximate, not to scale. floorplansUsketch.com © (ID1013428)

### Energy Efficiency Graph



These particulars, whilst believed to be accurate are set out as a general outline only for guidance and do not constitute any part of an offer or contract. Intending purchasers should not rely on them as statements of representation of fact, but must satisfy themselves by inspection or otherwise as to their accuracy. No person in this firm's employment has the authority to make or give any representation or warranty in respect of the property.