

HJC

HIGHER VALUES



Warwick Road

Thames Ditton, KT7 0PR

Guide Price £435,000

A light and bright two bedroom ground floor maisonette, presented beautifully, in this ever-popular Thames Ditton location. With stripped floorboards, original fireplace and period-style radiators, the living room leads through to an excellent fitted kitchen complete with a pretty butler sink. Double doors lead out to an ample west-facing private garden of over 40ft, with separate patio, lawned and decking areas for entertaining or playing. Further accommodation includes two characterful bedrooms and a striking contemporary bathroom. Lots of potential to add value; a rear gate leads from the garden to an access road behind, opening up a possibility to create off-street parking on the existing hard standing, and also the ability to extend the main building backwards (STPP) into the garden, as others have on the road. Close to local amenities, the much sought after local schools, Thames Ditton station with regular trains to London Waterloo and the beautiful River Thames with views over to Hampton Court Palace.

- Light and bright garden maisonette
- Contemporary kitchen and bathroom
- Potential to extend, STPP
- Close to amenities, station and the river
- Private west-facing garden of c.40ft
- Two bedrooms
- Popular Thames Ditton location
- Original character from the period

Warwick Road

Approximate Gross Internal Area = 50.7 sq m / 546 sq ft

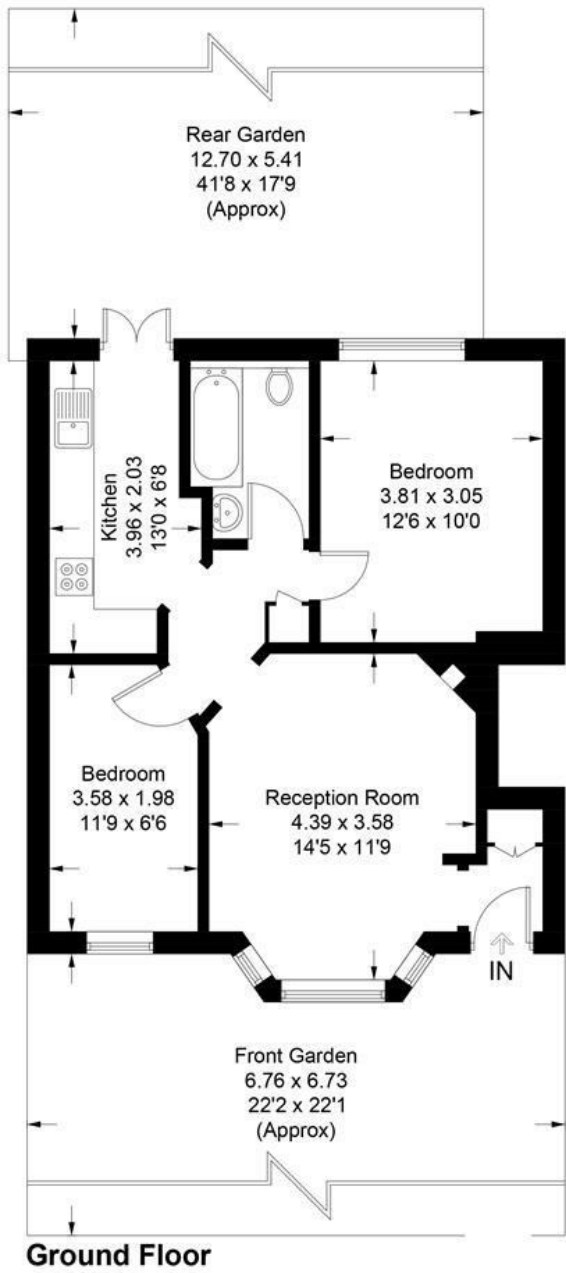
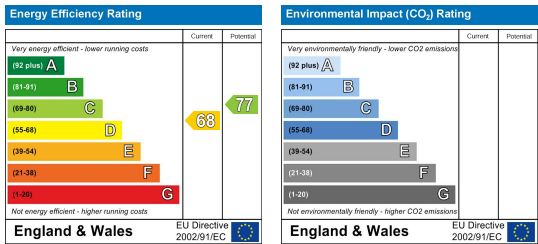


Illustration for identification purposes only, measurements are approximate, not to scale. Fourlabs.co © (ID1214740)

Energy Efficiency Graph



These particulars, whilst believed to be accurate are set out as a general outline only for guidance and do not constitute any part of an offer or contract. Intending purchasers should not rely on them as statements of representation of fact, but must satisfy themselves by inspection or otherwise as to their accuracy. No person in this firms employment has the authority to make or give any representation or warranty in respect of the property.