

# HJC

HIGHER VALUES



## Angel Road

Thames Ditton, KT7 0AU

Guide Price

£2,000,000

Set back from the road on a broad 0.25 acre plot, accessed via a sweeping carriage driveway is Pippins, a splendid detached family home near Giggs Hill cricket green in Thames Ditton. The well-designed layout is perfect for entertaining inside and out, with an inviting large open hallway off which opens the dining room, WC, kitchen and rear reception. Upstairs are 5 good sized bedrooms, 2 benefitting ensuite shower rooms and also a family bathroom. Double French doors lead to patio and a maturely planted secluded garden with summer house. Loved for 25 years, this property offers opportunity to extend STPP and is in a quiet location just a short walk to Hinchley Wood secondary school, train links to London, local pub and village centre.

- Detached family home
- Carriage driveway for multiple cars
- Secluded private garden
- Arranged over only two floors
- Convenient location
- Near Hinchley Wood School
- Scope to extend STPP
- Close to Giggs Hill cricket green

Angel Road

Approximate Gross Internal Area = 217.1 sq m / 2337 sq ft

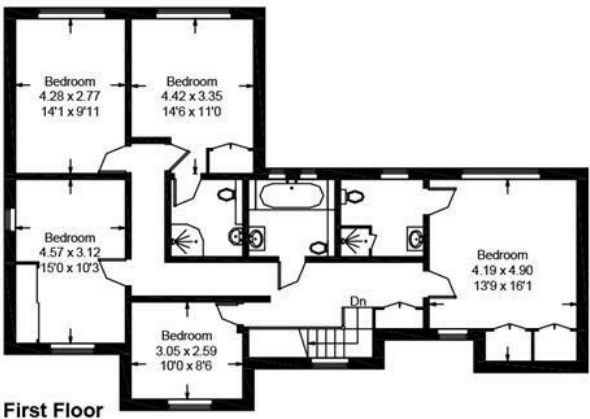
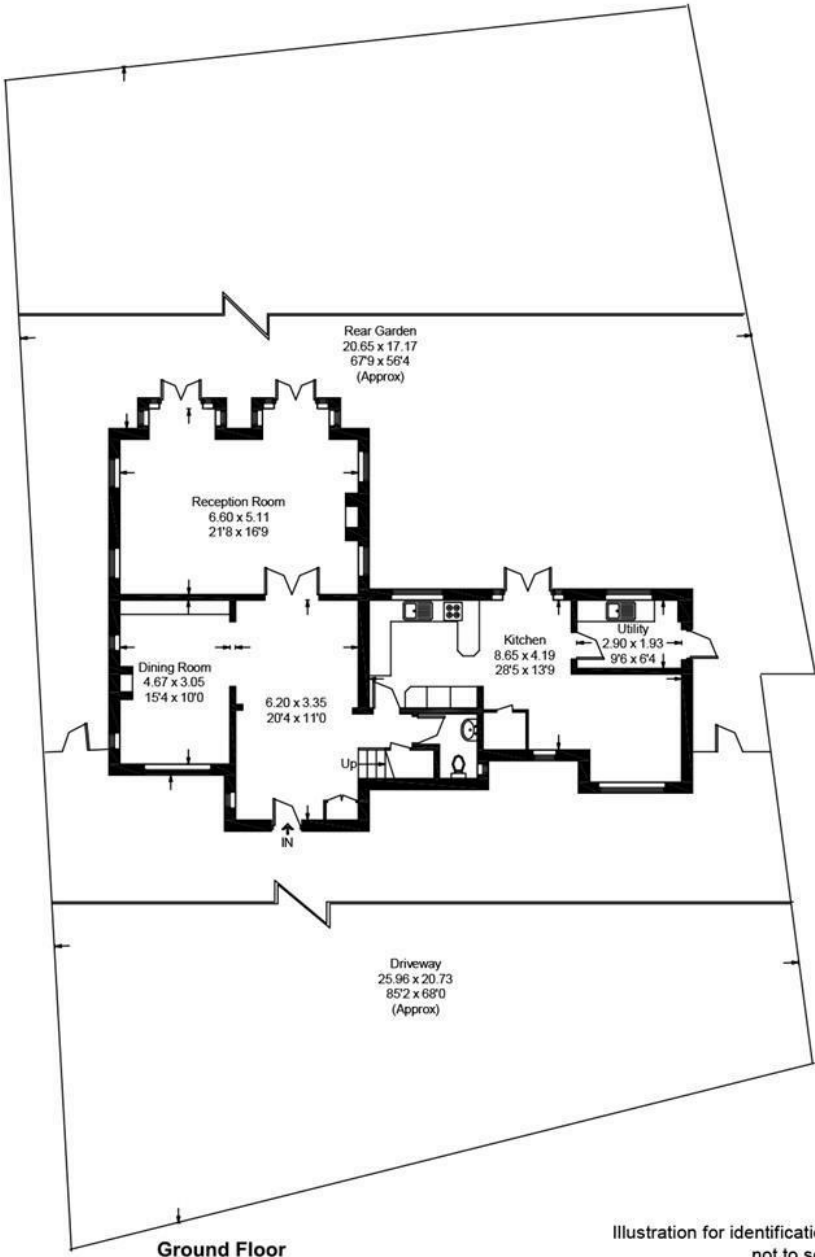
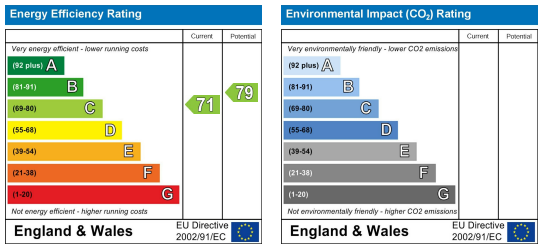


Illustration for identification purposes only, measurements are approximate, not to scale. Fourlabs.co © (ID1170695)

Energy Efficiency Graph



These particulars, whilst believed to be accurate are set out as a general outline only for guidance and do not constitute any part of an offer or contract. Intending purchasers should not rely on them as statements of representation of fact, but must satisfy themselves by inspection or otherwise as to their accuracy. No person in this firm's employment has the authority to make or give any representation or warranty in respect of the property.