

# HJC

HIGHER VALUES



## Greenwood Road

Thames Ditton, KT7 0DY

Guide Price

£1,050,000

Arranged over two floors and comprising over 1600 sq ft of accommodation, this excellent 1930's detached family home is situated 300 yards from Hinchley Wood School. On the ground floor are three reception areas: the main double living room, a games room/conservatory opening to rear on to the garden, and an office/family room off the kitchen. Also leading from the kitchen is a versatile utility/wet room. On the first floor are three bedrooms and a family bathroom. Outside to front is a resin bonded driveway providing off-street parking, leading to a garage integrated into the house. The rear garden is mainly lawned, with a sun trap patio area, as well as a generous sized garden room/workshop.

- Detached family home
- Immaculate rear garden
- Well-presented throughout
- Ground floor wet room/utility
- Resin bonded driveway
- 300 yards from Hinchley Wood School
- Three reception areas
- Conservatory/games room
- Garage to front
- Workshop/garden cabin

Floor Plan

Greenwood Road KT7

Approximate Gross Internal Floor Area = 150.3 sq m / 1619 sq ft  
Outbuilding Area = 9.9 sq m / 107 sq ft  
Total Area = 160.2 sq m / 1726 sq ft

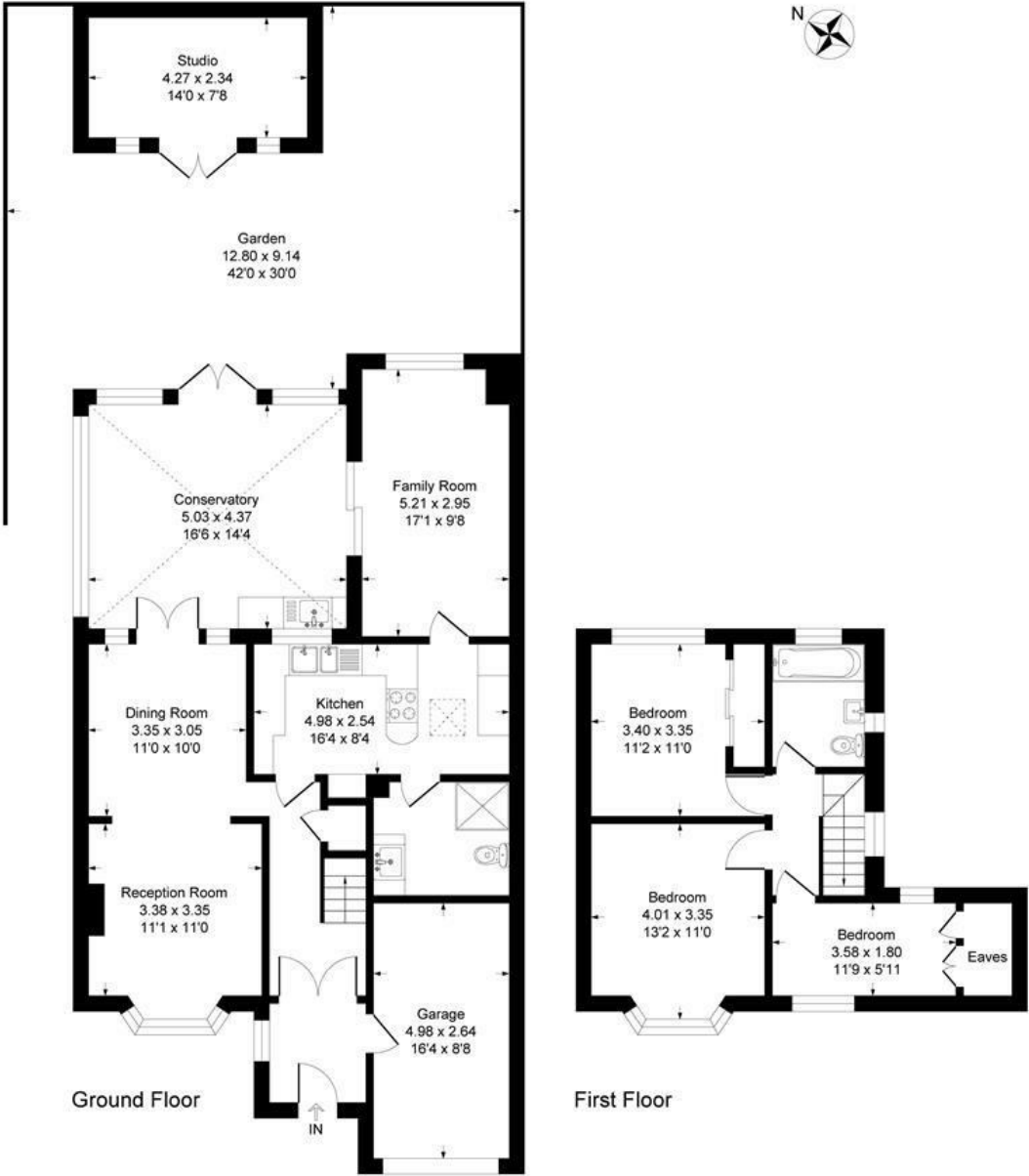
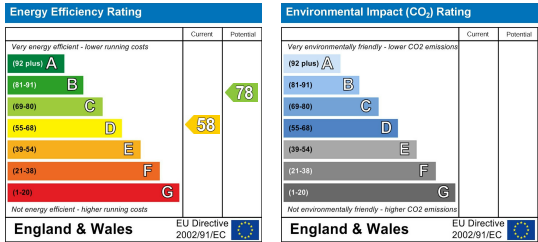


Illustration for identification purposes only, measurements are approximate, not to scale.  
Produced By Esjay Property Marketing

Energy Efficiency Graph



These particulars, whilst believed to be accurate are set out as a general outline only for guidance and do not constitute any part of an offer or contract. Intending purchasers should not rely on them as statements of representation of fact, but must satisfy themselves by inspection or otherwise as to their accuracy. No person in this firms employment has the authority to make or give any representation or warranty in respect of the property.