

HJC

HIGHER VALUES



Moleمبر Road

East Molesey, KT8 9NH

Guide Price

£1,499,950

Roma is a 4/5 bedroom detached family home located in a peaceful cul-de-sac on the banks of the River Mole, a short walk from the popular East Molesey village and Bridge Road. Situated in the heart of this property is an impressive open plan kitchen/dining room with uninterrupted views via bi-folding doors across a south facing garden with patio to the river and 40ft mooring. Also benefitting 2 further reception rooms, 3 bathrooms, a utility and off-street parking.

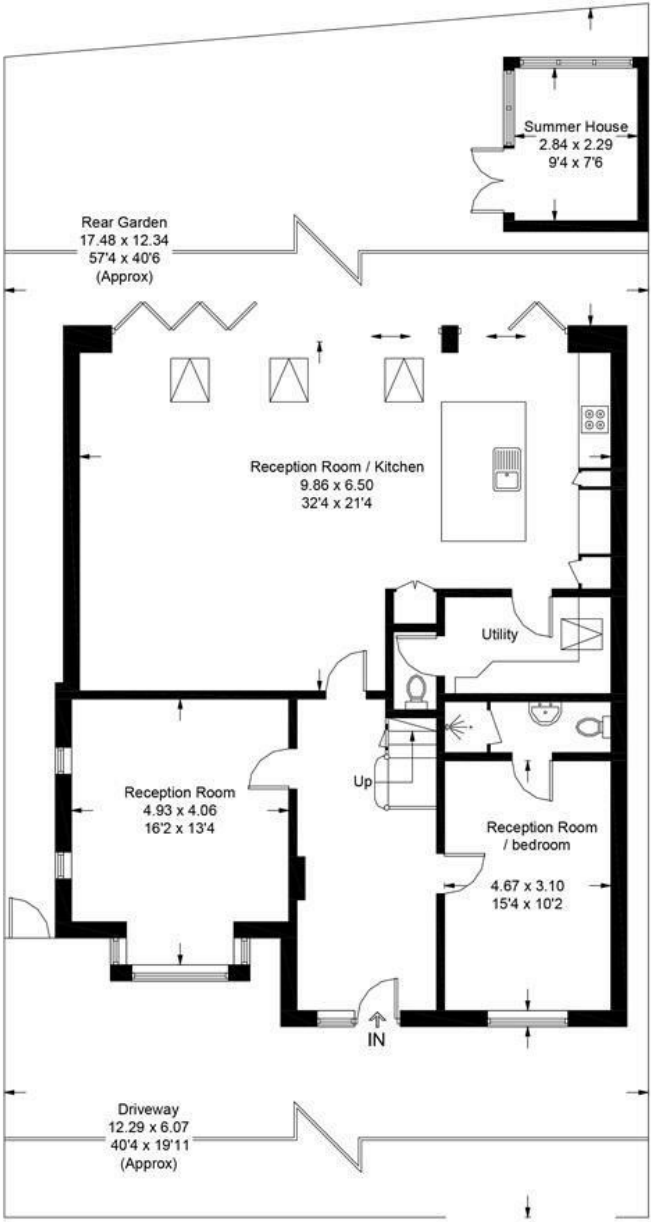
Material Info: Brick Walls & Roof Tiles. Water / Electricity / Sewerage: Mains. Heating: Gas Mains. Broadband: Fibre (FTTC). Mobile Coverage: Indoor: Likely Outdoor: Likely.

- 4/5 bedroom detached property
- Open plan kitchen/dining room
- Summer House/garden office
- 40 ft mooring
- Off street parking
- 3 bathrooms
- 2 further reception rooms
- South facing garden
- Riverside location
- Close to East Molesey shops

Floor Plan

Roma, Molember Road

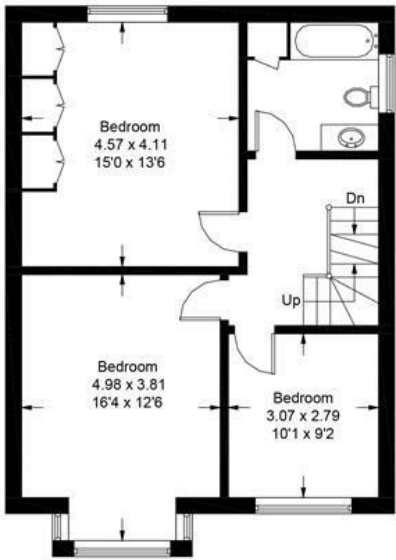
Approximate Gross Internal Area = 213.3 sq m / 2296 sq ft
Summer House = 6.5 sq m / 70 sq ft
Total = 219.8 sq m / 2366 sq ft



Ground Floor



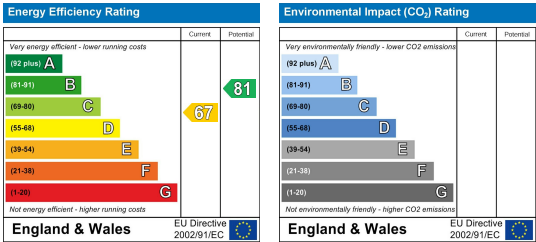
Second Floor



First Floor

Illustration for identification purposes only, measurements are approximate, not to scale. floorplansUsketch.com © (ID1122691)

Energy Efficiency Graph



These particulars, whilst believed to be accurate are set out as a general outline only for guidance and do not constitute any part of an offer or contract. Intending purchasers should not rely on them as statements of representation of fact, but must satisfy themselves by inspection or otherwise as to their accuracy. No person in this firms employment has the authority to make or give any representation or warranty in respect of the property.