

HJC

HIGHER VALUES



Portsmouth Road

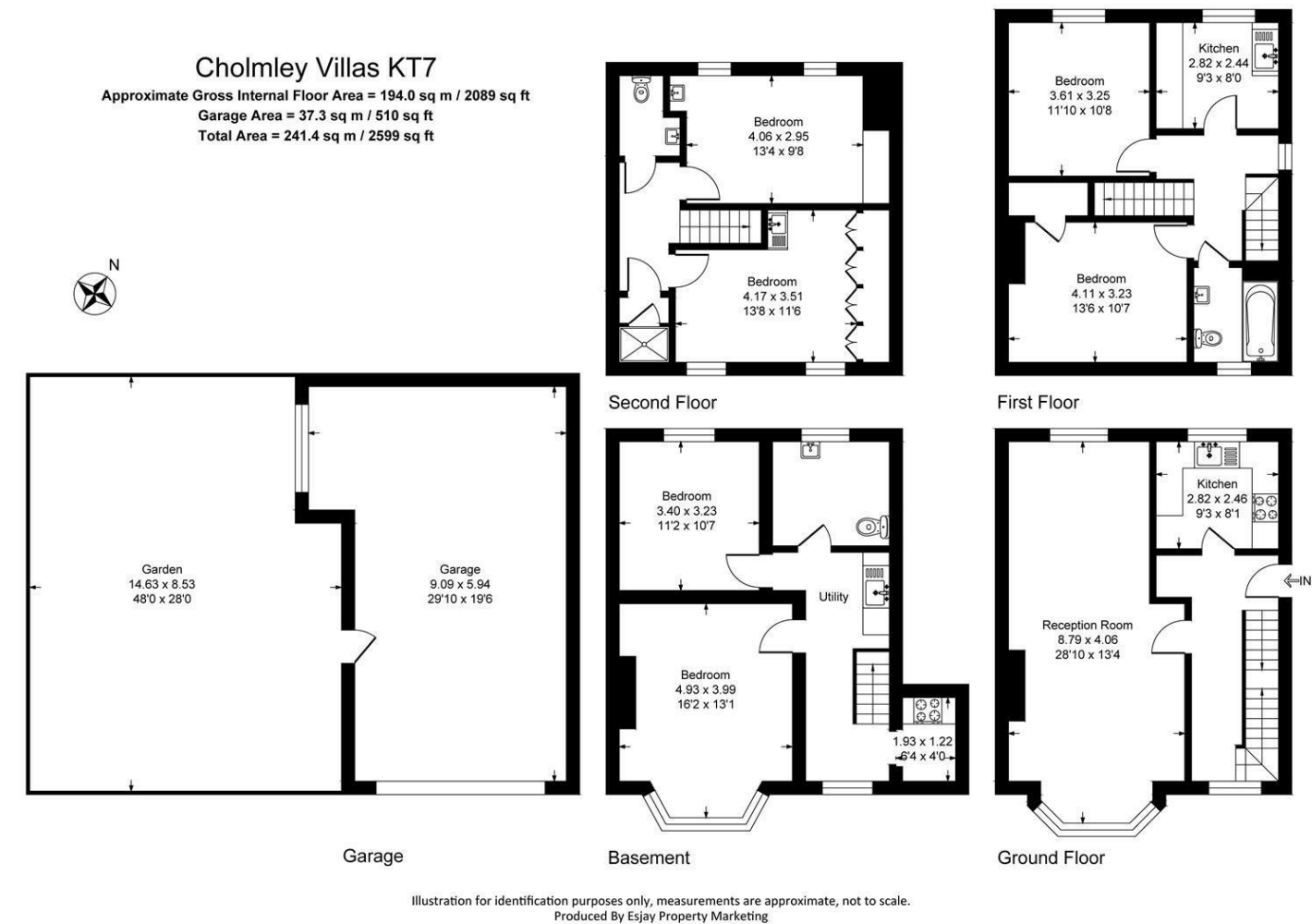
Thames Ditton, KT7 0XU

£950,000

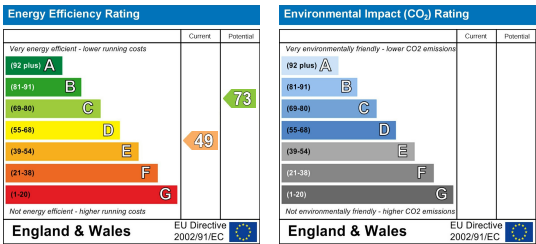
A substantial end-terrace Edwardian townhouse with huge potential - offering a wealth of character and opportunity for those looking to put their own stamp on a home. Arranged over four floors, the property comprises 6 bedrooms and 3 bathrooms. Set in a central location, between Surbiton and Thames Ditton stations, this property offers tremendous scope for refurbishment (STPP) and benefits hard standing to front, a triple detached garage, good sized garden and no onward chain.

- Substantial project
- 6 bedrooms, 3 bathrooms
- Beautiful Feature Fireplace
- Detached triple garage
- Convenient transport links - bus and trains
- End terrace Edwardian townhouse
- Arranged over 4 floors
- Hard standing to front
- Close to local amenities and schools

Floor Plan



Energy Efficiency Graph



These particulars, whilst believed to be accurate are set out as a general outline only for guidance and do not constitute any part of an offer or contract. Intending purchasers should not rely on them as statements of representation of fact, but must satisfy themselves by inspection or otherwise as to their accuracy. No person in this firms employment has the authority to make or give any representation or warranty in respect of the property.