

HJC

HIGHER VALUES



Alexandra Road

Thames Ditton, KT7 0QS

£575,000

This charming period terrace is situated towards the top of a highly desirable river road. The ground floor offers a spacious double reception room with a working fireplace, a fitted kitchen, shower room with WC. Upstairs are two double bedrooms with ample built-in wardrobes and a modern white bathroom. The cottage features a secluded north west-facing courtyard garden at the rear and a pretty front garden with picket fence and room for bike storage. Across the road is the Summer Road recreation ground, perfect for children and four-legged friends alike. Conveniently located just 0.7 miles from the train station and excellent schools. Plenty of potential for extension STPP as neighbouring homes have done successfully.

Material Info: Brick Walls & Roof Tiles. Water / Electricity / Sewerage: Mains. Heating: Gas Mains. Broadband: Cable / Fibre. Mobile Coverage: Indoor: Limited Outdoor: Likely.

- Pretty Victorian terrace
- Close to recreation ground
- Courtyard garden
- Double glazed throughout
- Scope to extend and add value, STPP
- 0.7miles to train station
- River Road location

13 Alexandra Road



Approximate Gross Internal Area = 73.9 sq m / 795 sq ft

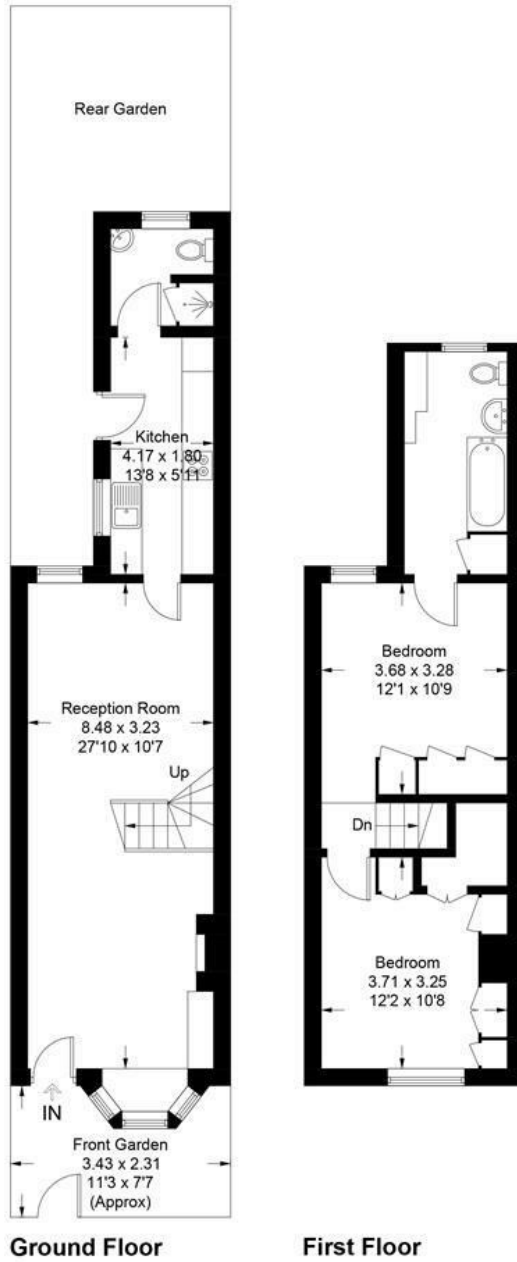
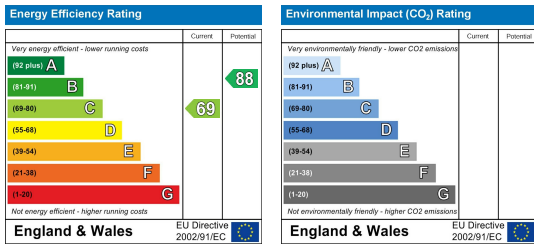


Illustration for identification purposes only, measurements are approximate, not to scale. Fourlabs.co © (ID1134579)

Energy Efficiency Graph



These particulars, whilst believed to be accurate are set out as a general outline only for guidance and do not constitute any part of an offer or contract. Intending purchasers should not rely on them as statements of representation of fact, but must satisfy themselves by inspection or otherwise as to their accuracy. No person in this firm's employment has the authority to make or give any representation or warranty in respect of the property.