

HJC

HIGHER VALUES



Ferry Road

Thames Ditton, KT7 0XZ

£700,000

A beautifully presented two bedroom modern home which boasts excellent proportions and the option of a third bedroom downstairs. With a covered carport that accommodates a small car to front, you enter via a cloaks cupboard into the main living room, an airy space comprising sitting and dining areas, open plan to a generous kitchen and with patio doors opening to the patio garden to rear. Off the main room is another separate reception room, with window to front and also opening to the rear garden. Upstairs are two double bedrooms, each with good built-in wardrobes spaces and one with an additional built-in dressing table, along with a family bathroom. Ferry Road is conveniently located between Thames Ditton village and Surbiton and has a lovely riverside grassed area with additional launch for small boats and SUPs. EPC rating: C.

Material Info: Brick Walls & Roof Tiles. Water / Electricity / Sewerage: Mains. Heating: Gas Mains. Broadband: Fibre (FTTC). Mobile Coverage: Indoor: Limited Outdoor: Likely.

- Two double bedrooms
- River Road
- Paved rear garden
- Open plan kitchen/dining/living
- Near to good schools
- Carport area
- Second reception room
- Excellent presentation throughout
- Convenient location
- Plenty of storage

Floor Plan

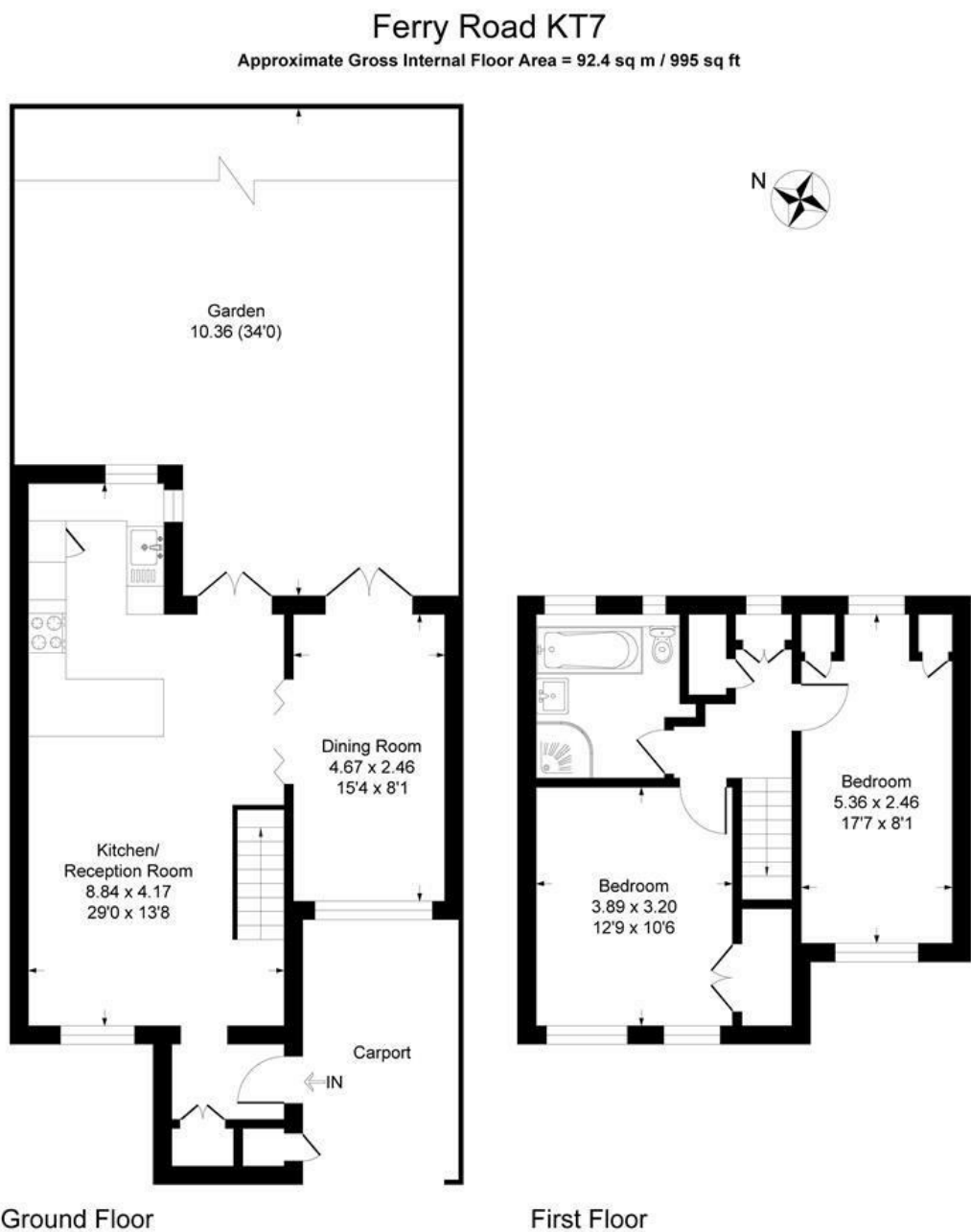
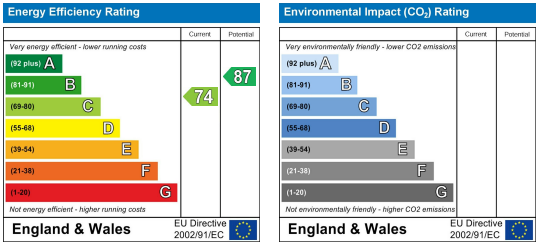


Illustration for identification purposes only, measurements are approximate, not to scale.
Produced By Esjay Property Marketing

Energy Efficiency Graph



These particulars, whilst believed to be accurate are set out as a general outline only for guidance and do not constitute any part of an offer or contract. Intending purchasers should not rely on them as statements of representation of fact, but must satisfy themselves by inspection or otherwise as to their accuracy. No person in this firms employment has the authority to make or give any representation or warranty in respect of the property.