

HJC

HIGHER VALUES



Portsmouth Road

Thames Ditton, KT7 0TE

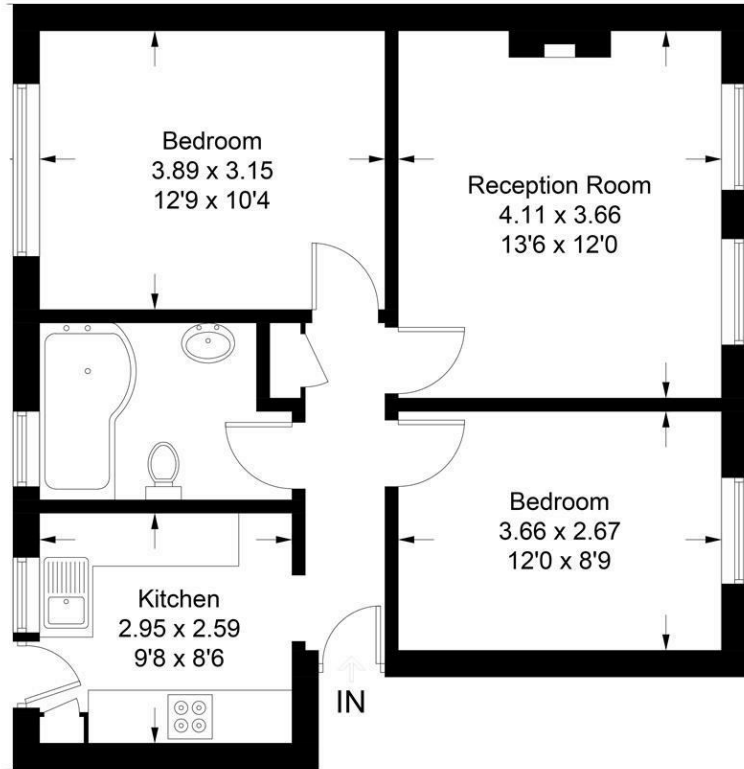
£365,000

A newly refurbished 2 bedroom ground floor purpose-built flat in Thames Ditton. Accommodation comprises two double bedrooms, living room with fireplace and a bright south aspect, modern bathroom and recently upgraded kitchen with back door providing direct access to a communal garden area to rear. With residents' parking, a share of the freehold and a lease in excess of 900 years, this represents an excellent first time or investment purchase. No onward chain. Service charge £1785.00 per annum, including buildings insurance.

- Ground floor purpose built flat
- Newly fitted kitchen
- Living room with fireplace
- Newly fitted carpets
- Share of freehold
- 2 Double bedrooms
- Modern bathroom
- Freshly redecorated throughout
- Communal gardens
- No onward chain

10 Rythe Court

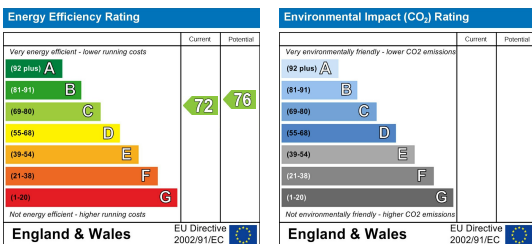
Approximate Gross Internal Area = 57.1 sq m / 615 sq ft



Ground Floor

Illustration for identification purposes only, measurements are approximate, not to scale. floorplansUsketch.com © (ID1076205)

Energy Efficiency Graph



These particulars, whilst believed to be accurate are set out as a general outline only for guidance and do not constitute any part of an offer or contract. Intending purchasers should not rely on them as statements of representation of fact, but must satisfy themselves by inspection or otherwise as to their accuracy. No person in this firm's employment has the authority to make or give any representation or warranty in respect of the property.