

HJC

HIGHER VALUES



Westville Road

Thames Ditton, KT7 0UJ

£950,000

Beautiful three bedroom semi-detached family home, located within two thirds of a mile of Hinchley Wood School. Benefitting from off-street parking for two cars, side access and a west-facing pretty garden of approximately 70ft, which leads to the Rythe, a tributary of the River Thames. This wonderful home offers plenty of scope for extending and personalising. The ground floor comprises a bright hallway, double reception room leading to a conservatory which opens to the garden to rear, a kitchen and further study with workshop space behind. The first floor offers three double bedrooms and a family bathroom with separate WC. Offered to market chain-free.

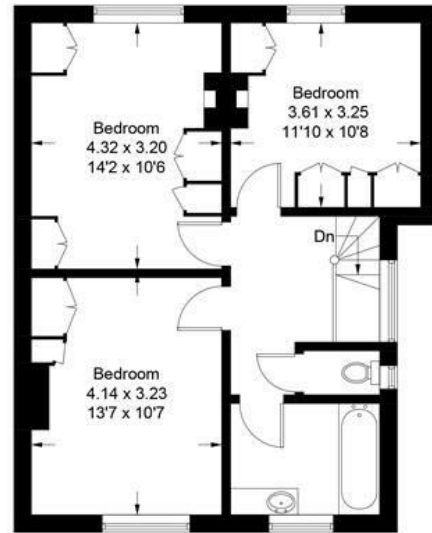
- Semi-detached family house
- Separate study room
- Three double bedrooms
- 70ft west-facing garden
- Three reception areas
- Scope for improvement
- Pretty period home
- Off-street parking for two

68 Westville Road

Approximate Gross Internal Area = 135 sq m / 1453 sq ft



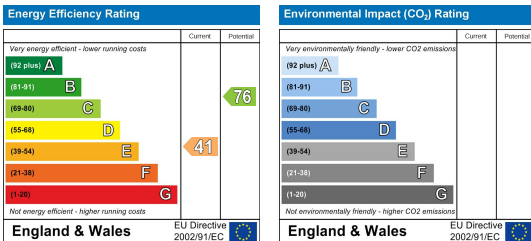
Ground Floor



First Floor

Illustration for identification purposes only, measurements are approximate, not to scale. floorplansUsketch.com © (ID1064843)

Energy Efficiency Graph



These particulars, whilst believed to be accurate are set out as a general outline only for guidance and do not constitute any part of an offer or contract. Intending purchasers should not rely on them as statements of representation of fact, but must satisfy themselves by inspection or otherwise as to their accuracy. No person in this firm's employment has the authority to make or give any representation or warranty in respect of the property.