

HJC

HIGHER VALUES



Ember Gardens

Thames Ditton, KT7 0LL

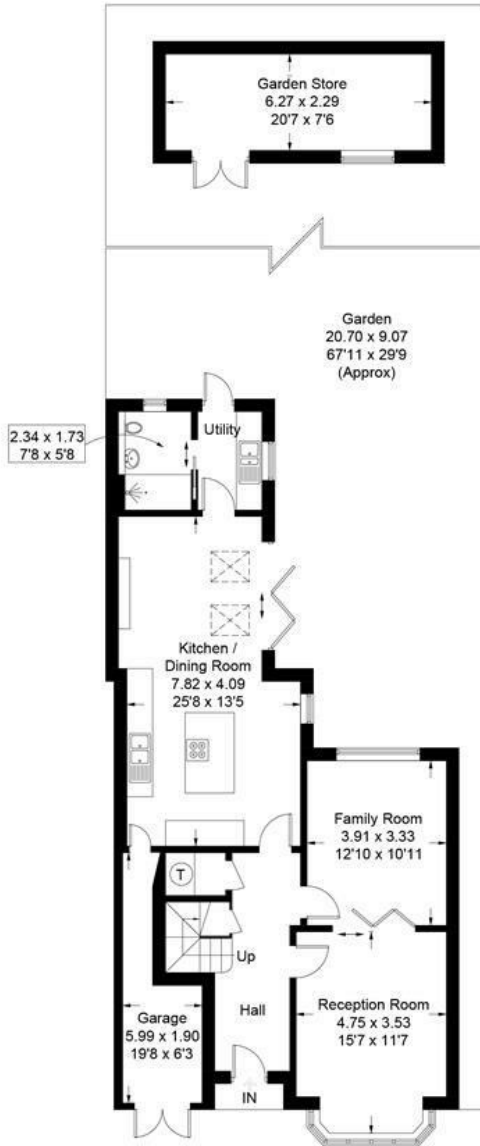
£1,295,000

A pristine 1930's detached family home located in a quiet cul-de-sac in Thames Ditton, thoughtfully extended and built to exacting standards. To front is a pretty garden, off-street parking and an electric car point. On the ground floor there are three reception areas, a main double reception room with interconnecting doors and a further kitchen/dining/family room. Also on the ground floor is a dedicated utility area, a further shower room and a garage/storage area. Upstairs are four double bedrooms, two with built-in wardrobe storage and one with en-suite shower room. Also off a large landing comes the family bathroom and there is loft above. Bi-folding doors open from the family room to a rear garden of circa 67ft, in which is a 20ft garden store.

- Detached family home
- Three Reception Rooms
- Three bath/shower rooms
- Well built 20ft garden store
- Off street parking, electric car hook-up & garage
- Four double bedrooms
- Kitchen/dining family room
- Bi-folding doors to 67ft garden
- Utility room
- Quiet cul-de-sac location

Ember Gardens, KT7

Approximate Gross Internal Area = 151.1 sq m / 1627 sq ft
 Garden Store = 14.6 sq m / 157 sq ft
 Total = 165.7 sq m / 1784 sq ft

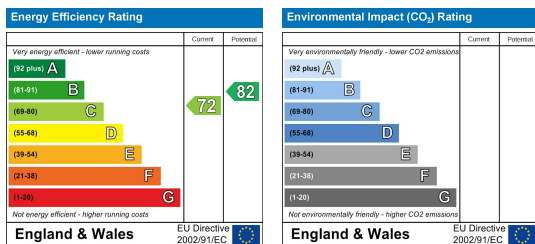


Ground Floor

First Floor

Measured in accordance with RICS Code of Measuring Practice. To be used for identification and guidance purposes only. Whilst every care is taken in the preparation of this plan, please check all dimensions, shapes and compass bearings before making any decisions reliant upon them. www.london58.com © 2023 hello@london58.com

Energy Efficiency Graph



These particulars, whilst believed to be accurate are set out as a general outline only for guidance and do not constitute any part of an offer or contract. Intending purchasers should not rely on them as statements of representation of fact, but must satisfy themselves by inspection or otherwise as to their accuracy. No person in this firm's employment has the authority to make or give any representation or warranty in respect of the property.