

# HJC

HIGHER VALUES



## Portsmouth Avenue

Thames Ditton, KT7 0RU

Guide Price

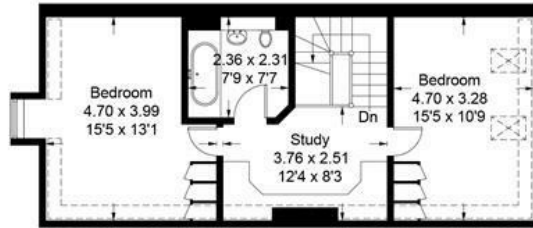
£1,150,000

Hingham House is a magnificently proportioned end of terrace townhouse in Thames Ditton. Two impressive rooms dominate the ground floor with utility between - an open plan high specification kitchen/dining room to front and a large reception room with bi-folding doors opening to the garden at rear. The four double bedrooms and three bathrooms are arranged over two floors, including a master suite with dressing room. The property boasts an impressive contemporary feel throughout, encompassing architectural detailing such as high ceilings and beautiful architraves and cornices. Also benefitting a considerable study area, secure gated off street parking and separate private attached garage - within easy reach of Giggs Hill cricket green, shops, excellent schools and both Surbiton and Thames Ditton train stations. This property still has new-build guarantees and excellent EPC rating.

- End of terrace townhouse
- 3 further double bedrooms
- Large study area & Utility
- Reception room with bi-folding doors to garden
- Close proximity to stations, parks and schools
- Master suite with dressing room
- 3 bathrooms
- Open plan kitchen/dining room
- Secure gated off-street parking and private garage
- Council Tax Band: G

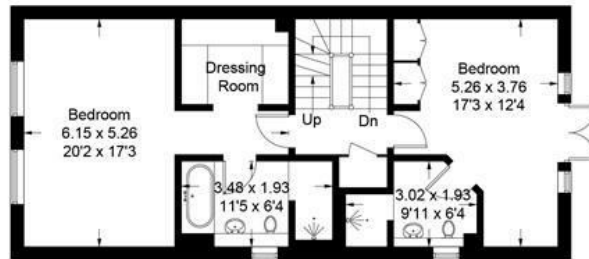
## Portsmouth Avenue, KT7

Approximate Gross Internal Area = 188.8 sq m / 2033 sq ft  
 (Including Reduced Headroom = 6.7 sq m / 73 sq ft)  
 Garage = 14.9 sq m / 161 sq ft  
 Total = 203.7 sq m / 2194 sq ft

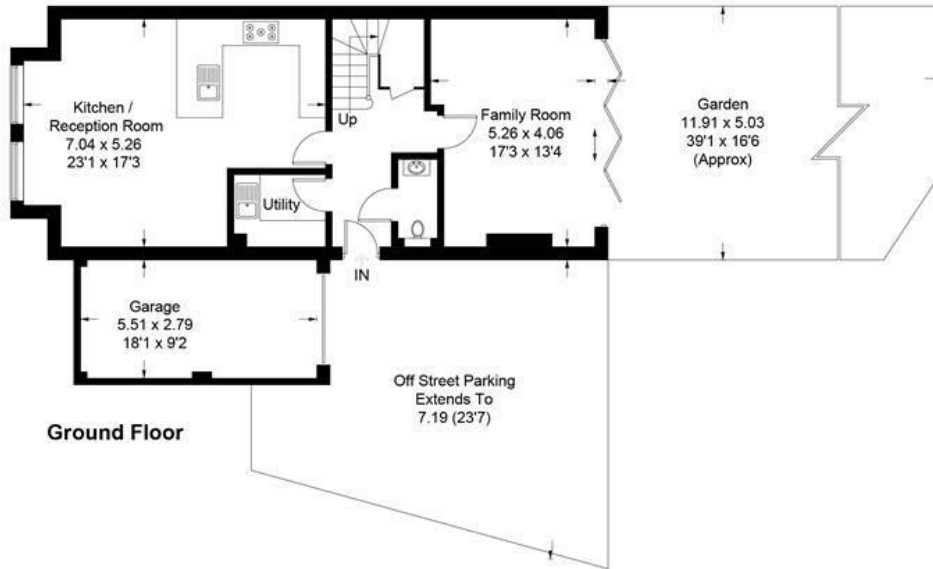


= Reduced Headroom

**Second Floor**



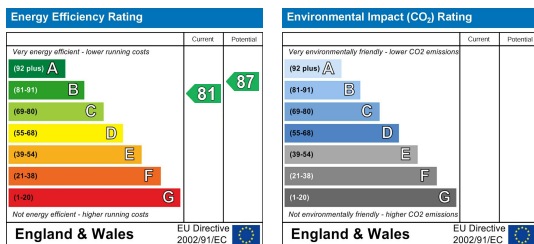
**First Floor**



**Ground Floor**

Measured in accordance with RICS Code of Measuring Practice. To be used for identification and guidance purposes only.  
 Whilst every care is taken in the preparation of this plan, please check all dimensions, shapes and compass bearings before making any decisions reliant upon them.  
[www.london58.com](http://www.london58.com) © 2022 [hello@london58.com](mailto:hello@london58.com)

## Energy Efficiency Graph



These particulars, whilst believed to be accurate are set out as a general outline only for guidance and do not constitute any part of an offer or contract. Intending purchasers should not rely on them as statements of representation of fact, but must satisfy themselves by inspection or otherwise as to their accuracy. No person in this firm's employment has the authority to make or give any representation or warranty in respect of the property.