



ROSE COTTAGE

Thames Ditton



“Of all flowers, me thinks a rose is best”

William Shakespeare

Rose Cottage is a unique Grade II listed 17th century residence located in the heart of Thames Ditton village. This special 4 bedroom family home of 60 years is looking for a new custodian for the next phase of its life. Through the front gate, appropriately, a rose archway greets you to this very special house, with its distinctive weatherboard frontage and stunning walled cottage garden.

On the ground floor, the main entry hallway opens to two exquisite reception rooms - one with original inglenook fireplace, a formal dining room and a country kitchen with the old bread oven still in situ. There is also a downstairs shower room with WC.



The first floor comprises two double bedrooms, one with ensuite bathroom, and a shower room with separate WC. A further two bedrooms with charming dormer windows are located on the 2nd floor:

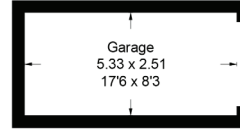
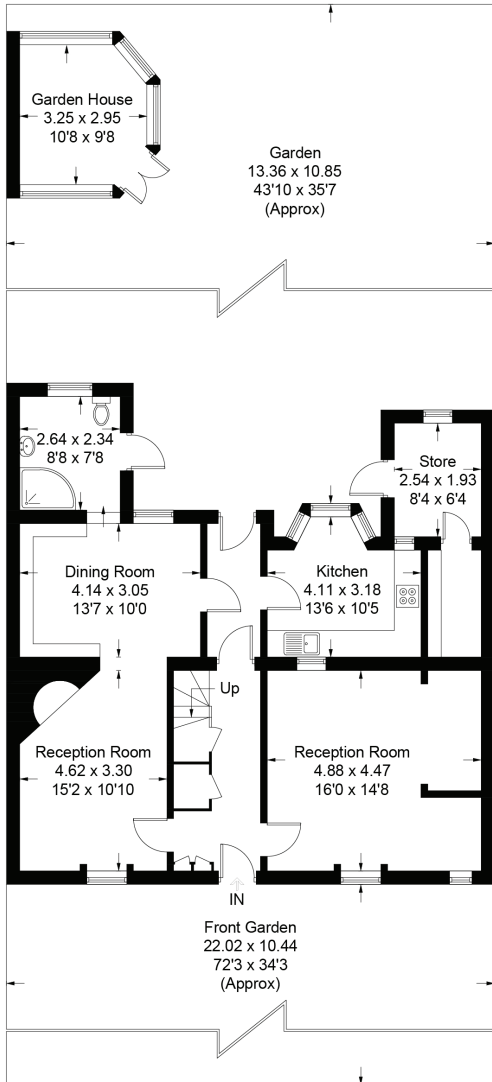
The beautifully-kept rear mature walled garden has a flagstone patio for al-fresco dining and a pretty pergola. It also benefits a useful utility/ storage room and a garden room/art studio. A secure back gate takes you via pathway to a private garage, in front of which you can park. Brimming with period features such as exposed timber frames, tall sash windows with 'monkey tail' handles, stained glass, wooden panelling, hidden cupboards, nooks and crannies.

Moments from high street shops and amenities, local schools and Thames Ditton railway station.

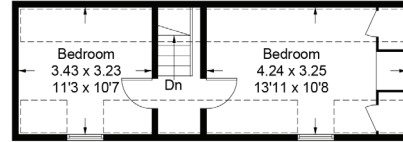




Ground floor

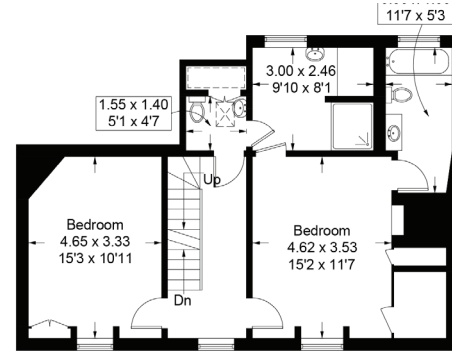


(Not Shown In Actual Location / Orientation)

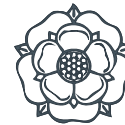


W

Second floor



First floor



Approximate Gross Internal Area = 191.1 sq m / 2057 sq ft
 Garden House = 8.9 sq m / 96 sq ft
 Garage = 13.8 sq m / 149 sq ft
 Total = 213.8 sq m / 2302 sq ft



H J C

HIGHER VALUES

2 High Street, Thames Ditton KT7 0RY
020 8398 3707 www.hjc.co.uk