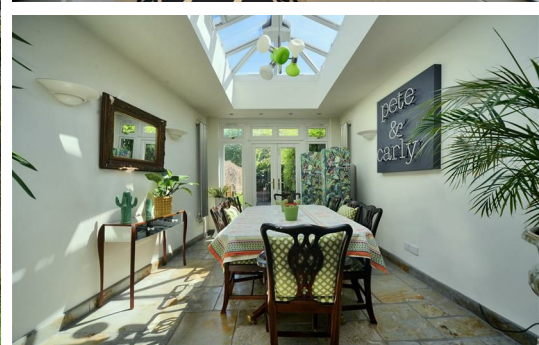


HJC

HIGHER VALUES



Orchard House Weston Green

Thames Ditton, KT7 0JP

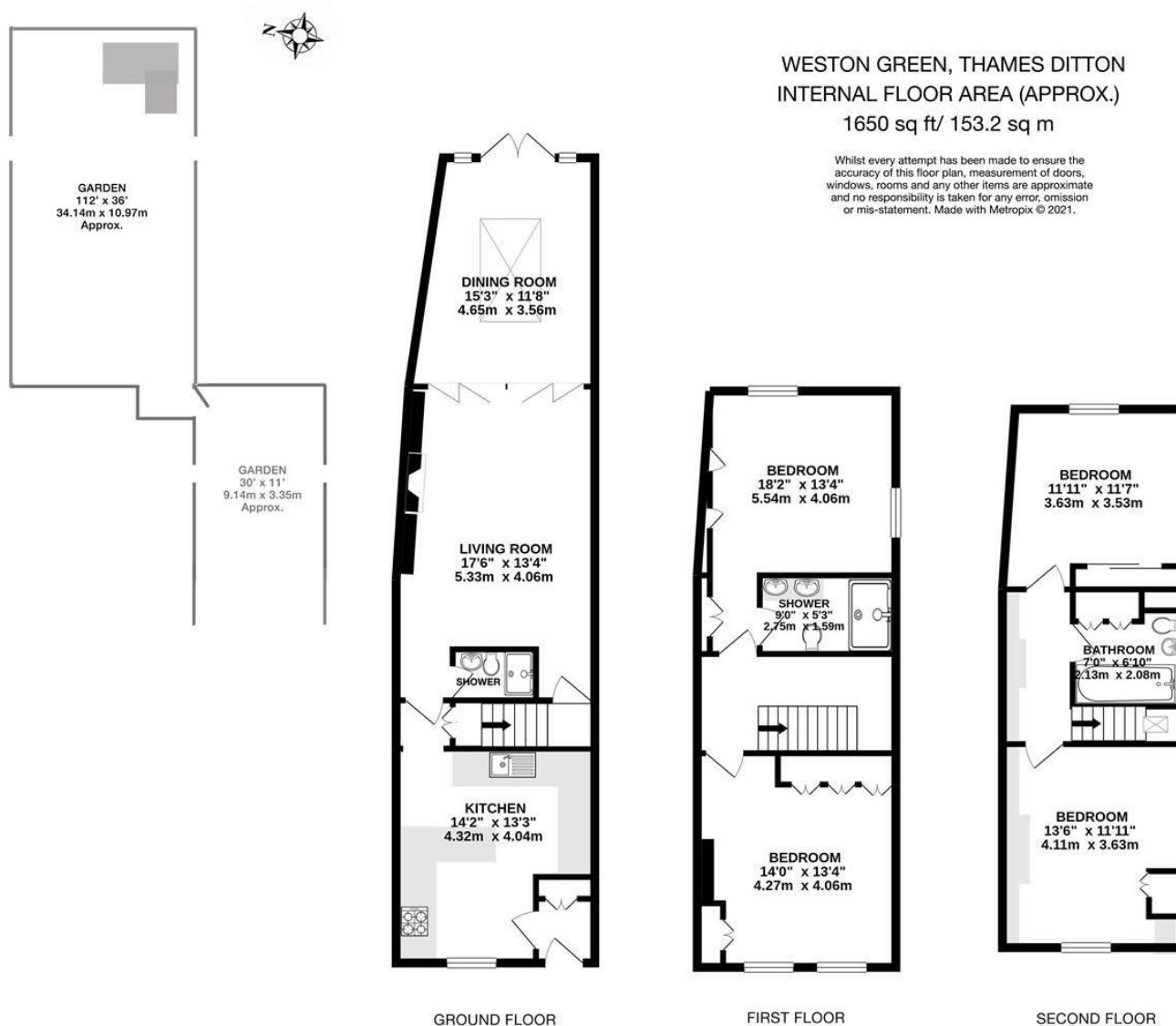
Offers In Excess Of

£1,100,000

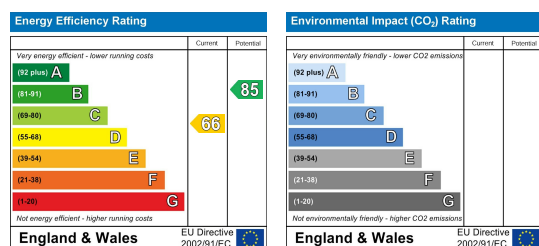
Stunning Georgian terrace townhouse with elegant frontage and grand kerb appeal – overlooking Weston Green with views to Esher Golf Course. Arranged over 3 floors boasting 4 well proportioned bedrooms, stunning high specification kitchen, 3 bathrooms, living room, dining room/orangery opening to walled courtyard – leading to a magical ‘secret’ garden with pond. Outbuildings with power provide the ideal haven for a work from home office. Perfect village location - walking distance to both Esher and Thames Ditton train stations, outstanding local schools, cafes, pubs and amenities. No onward chain.

- Georgian terrace townhouse
- High specification kitchen
- Living room
- Over 100ft 'secret' garden with pond
- Near Esher & Thames Ditton trains. Walking distance to Marneys village pub
- 4 bedroom, 3 bathroom
- Dining room / Orangery
- Walled courtyard
- Outbuildings / office with power
- No onward chain

Floor Plan



Energy Efficiency Graph



These particulars, whilst believed to be accurate are set out as a general outline only for guidance and do not constitute any part of an offer or contract. Intending purchasers should not rely on them as statements of representation of fact, but must satisfy themselves by inspection or otherwise as to their accuracy. No person in this firm's employment has the authority to make or give any representation or warranty in respect of the property.