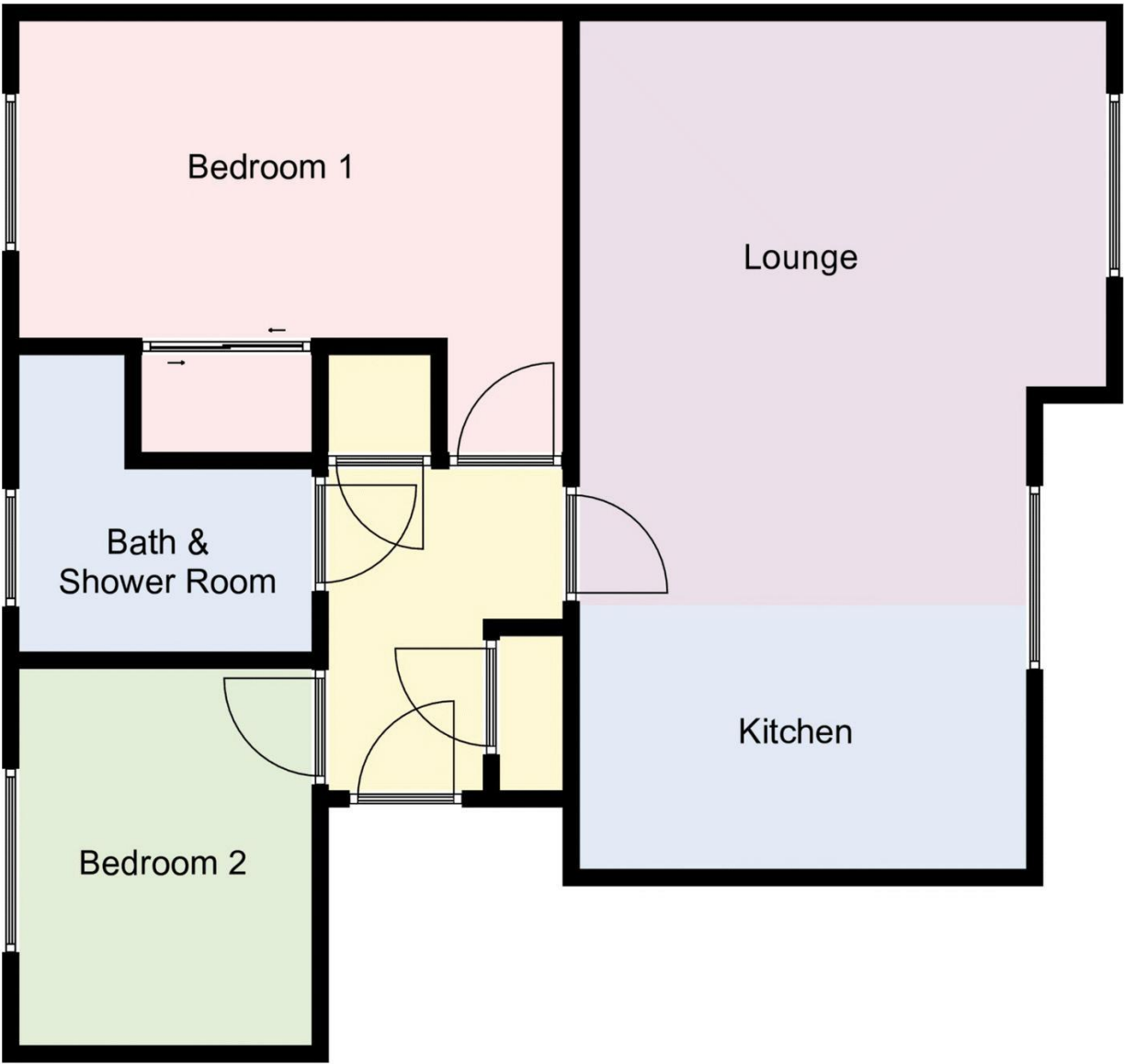


Property Reference:- F2129 Council Tax Band: C

Floor Plans (For illustrative purposes and not drawn exactly to scale)



Score	Energy rating	Current	Potential
92+	A		
81-91	B		
69-80	C		78 C
55-68	D	68 D	
39-54	E		
21-38	F		
1-20	G		

£210,000

12 Carisbrooke Court, North Square, Fareham, PO17 5FX

DRAFT DETAILS : We are awaiting verification from the Vendor that these details are correct



- Situated in Knowle Village
 - Two Double Bedroom Second Floor Apartment
 - Entrance Hall
 - Open-Plan Lounge/Kitchen
- Bath & Shower Room
 - Communal Garden
 - Parking
 - NO ONWARD CHAIN!

The Accommodation Comprises:-

Front door with telephone entry system into communal hallway leading to door into:-

Entrance hall:-

Flat ceiling with smoke detector and spotlighting inset, electric heater, cupboard with fuse box and meters, further cupboard housing hot water cylinder tank, door to:-

Lounge Area:-
23' 10" x 15' 1" (7.26m x 4.59m) Maximum Measurements

Two windows to side elevation, flat ceiling with lighting inset, electric heater.



Kitchen Area:-

Range of base and eye level units with roll top work surfaces, integrated oven and hob with concealed extractor over, one and a half bowl stainless steel sink unit with mixer tap, space for washing machine and fridge/freezer.



Bedroom 1:-
13' 2" x 12' 1" (4.01m x 3.68m) Maximum Measurements

Window to side elevation, electric heater, sliding mirror-fronted doors to wardrobe unit with shelving and rail.



Bedroom 2:-
10' 7" x 9' 3" (3.22m x 2.82m)

Window to side, electric heater.



Bath & Shower Room:-
9' 6" x 8' 4" (2.89m x 2.54m)

Window to side, close-coupled wc, wash hand basin with mixer tap, mirror-fronted cupboard over with shaver socket inset, tiled bath with hand shower attachment, shower cubicle with sliding door and electric shower, tiled to dado rail height with complimentary floor tiling.



Agents Notes:-

Allocated parking.
This property is Leasehold.