

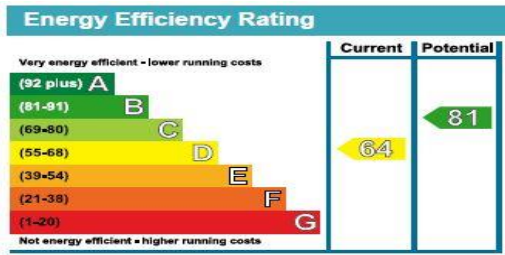
£385,000

11 Dalewood Road, Fareham, PO15 5LB

DRAFT DETAILS : We are awaiting verification from the Vendor that these details are correct



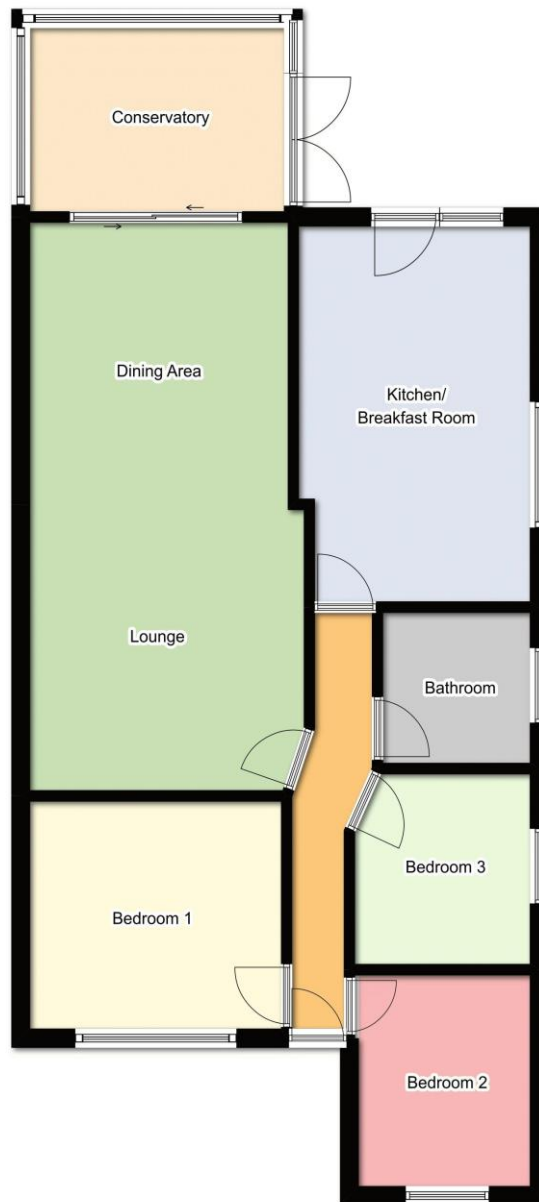
- Three Bedrooms
- Cul De Sac Location
- 24 Foot Lounge/Dining Area
- Kitchen/Breakfast Room
- Conservatory
- Bathroom
- Gas Central Heating
- Double Glazing
- Garage and Parking
- Enclosed Rear Garden



Property Reference : F2082

Council Tax Band: D

Floor Plans (For illustrative purposes and not drawn exactly to scale)



The Accommodation Comprises:-

Front door with obscured double glazed panel inset into:

Entrance Hall:-

Coving to ceiling, access to loft, smoke detector and radiator with shelf over.

Lounge/Dining Area:-

24' 2" x 12' 11" (7.36m x 3.93m) Maximum Measurements

Fireplace with raised hearth with electric fire inset. Double radiator with shelf over, coving to textured ceiling, double radiator with cabinet over, Sliding patio doors to:



Conservatory:-

11' 1" x 7' 8" (3.38m x 2.34m)

Double glazed with polycarbonate ceiling, radiator and double opening French doors giving access to covered area and garden.



Kitchen/Breakfast Room:-

15' 9" x 9' 11" (4.80m x 3.02m) Maximum Measurements

Double glazed window to side elevation, double glazed window and double glazed door giving access to rear and garden, range of base and eye level units with roll top work surfaces, one and a half bowl stainless steel sink unit with mixer tap, induction with extractor, split level oven and grill, space for washing machine, fridge/freezer, double radiator, breakfast peninsular bar, wall mounted gas central heating boiler.



Bedroom One:-

10' 8" x 9' 5 (3.25m x 2.87m)

Double glazed window to front elevation, range of fitted wardrobe units, radiator and coving to ceiling.



Bathroom:-

6' 0" x 5' 5 (1.83m x 1.65m)

Obscure double glazed window to side elevation, extractor, close coupled WC, pedestal wash hand basin, panelled bath, shower over, shower screen, heated towel rail, tiled..

Bedroom Two:-

8' 10" x 7' 11 (2.69m x 2.41m)

Double glazed window to front elevation, radiator and coving to ceiling.



Bedroom Three/Dining Room:-

7' 11" x 7' 11 (2.41m x 2.41m)

Double glazed window to side elevation, radiator and coving to ceiling, mirror-fronted wardrobe units.

Outside:-

Block paved driveway for parking, shared drive leads to the garage with up and over door and courtesy door to side.



Rear Garden:-

Laid to lawns with pergola to the rear for sitting, socialising and entertaining purposes, garden shed to the rear.



Disclaimer: These particulars are set out as a general outline in accordance with the Consumer Protection from Unfair Trading Regulations 2008 (CPR's) and Business Protection from Misleading Marketing Regulations 2008 (BPR's) only for the guidance of intending purchasers or lessees, and do not constitute any part of an offer or contract. Details are given without any responsibility, and any intending purchasers, lessees or third parties should not rely on them as statements or representations of fact, but must satisfy themselves by inspection or otherwise as to the correctness of each of them.

We have not carried out a structural survey and the services, appliances and specific fittings have not been tested. All photographs, measurements, floor plans and distances referred to are given as a guide only and should not be relied upon for the purchase of carpets or any other fixtures or fittings. Gardens, roof terraces, balconies and communal gardens as well as tenure and lease details cannot have their accuracy guaranteed for intending purchasers. Lease details, service ground rent (where applicable) are given as a guide only and should be checked and confirmed by your solicitor prior to exchange of contracts.

No person in the employment of Fenwicks Estates Ltd has any authority to make any representation or warranty whatever in relation to this property. Purchase prices, rents or other prices quoted are correct at the date of publication and, unless otherwise stated, exclusive of VAT.

Data Protection: We retain the copyright in all advertising material used to market this Property.

Money Laundering Regulations 2017: Intending purchasers will be required to produce identification documentation once an offer is accepted