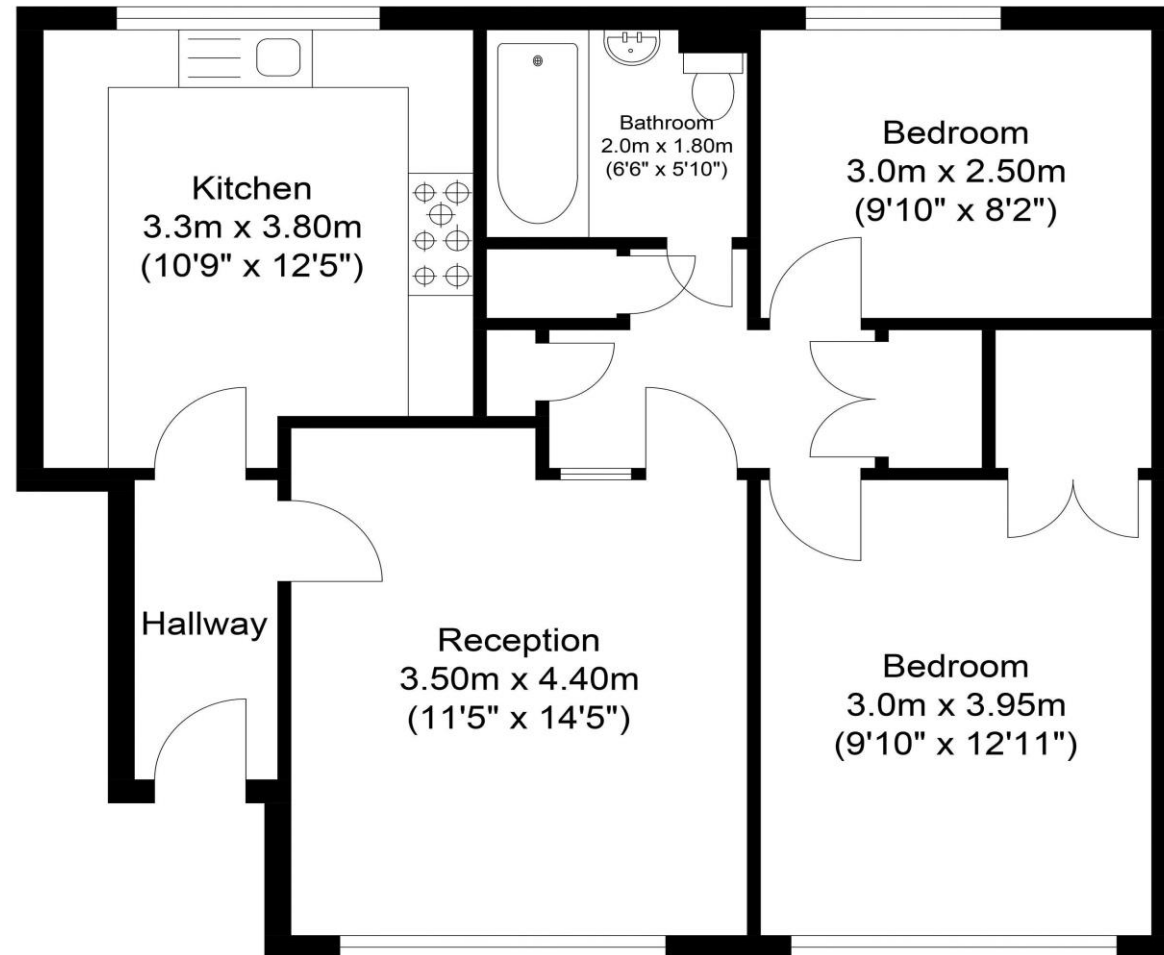


the floorplan...



Approx Gross Internal Floor Area : 62.27 sq m. (670.26 sq. ft.)



Ground Floor

more details from...

call: **Brian Cox Northolt: 0208 842 4008**
email: jeff.osullivan@brian-cox.co.uk
web: www.brian-cox.co.uk



0208 842 4008
brian-cox.co.uk



Brian Cox are delighted to offer to the market this stunning two double bedroom ground floor apartment situated a few minutes walk from Northolt Station. The property is larger than average and has been updated with a modern and stylish interior. Further benefits include a long lease, gas central heating and a large modern kitchen. If you are looking for your next home then this is for you. Call early to avoid missing out.



£335,000
Leasehold

The Farmlands, Northolt UB5 5EX

Consumer Protection from Unfair Trading Regulations 2008 We have not tested any apparatus, equipment, fixtures, fittings or services and so cannot verify that they are in working order or fit for purpose. You are advised to obtain verification from your solicitor or surveyor. References to the tenure of a property are based on information supplied by the seller. We have not had sight of the title documents and a buyer is advised to obtain verification from their solicitor. Items shown in photographs are not included unless specifically mentioned within the sales particulars, but may be available by separate negotiation. We advise you to book an appointment to view before embarking on any journey to see a property, and check its availability.



in brief...

- Ground floor
- 900+ Year Lease
- Chain Free
- Residents Parking
- Two Minute Walk to Northolt Station
- Large Modern Kitchen



the location...

nearest stations ...

Northolt (0.2 miles)
Northolt Park (0.8 miles)
Northolt is a town located in North West London and lies within zone 5 on the Central Line. There is good access to the West End of London and popular high street shops and restaurants in Ruislip which make the area a good choice for young professionals and families alike. There are two stations in the area which are Northolt Central Line Tube Station (31 minutes to Tottenham Court Road) and Northolt Park Overground Station. Northolt Park is a Network Rail station served by Chiltern Railways (21 minutes to Marylebone Station). There are also a number of local bus routes offering access to Heathrow, Ealing, Ruislip and numerous other locations. If you travel by road, the A40 is within easy reach with access to both the city and the Home Counties.