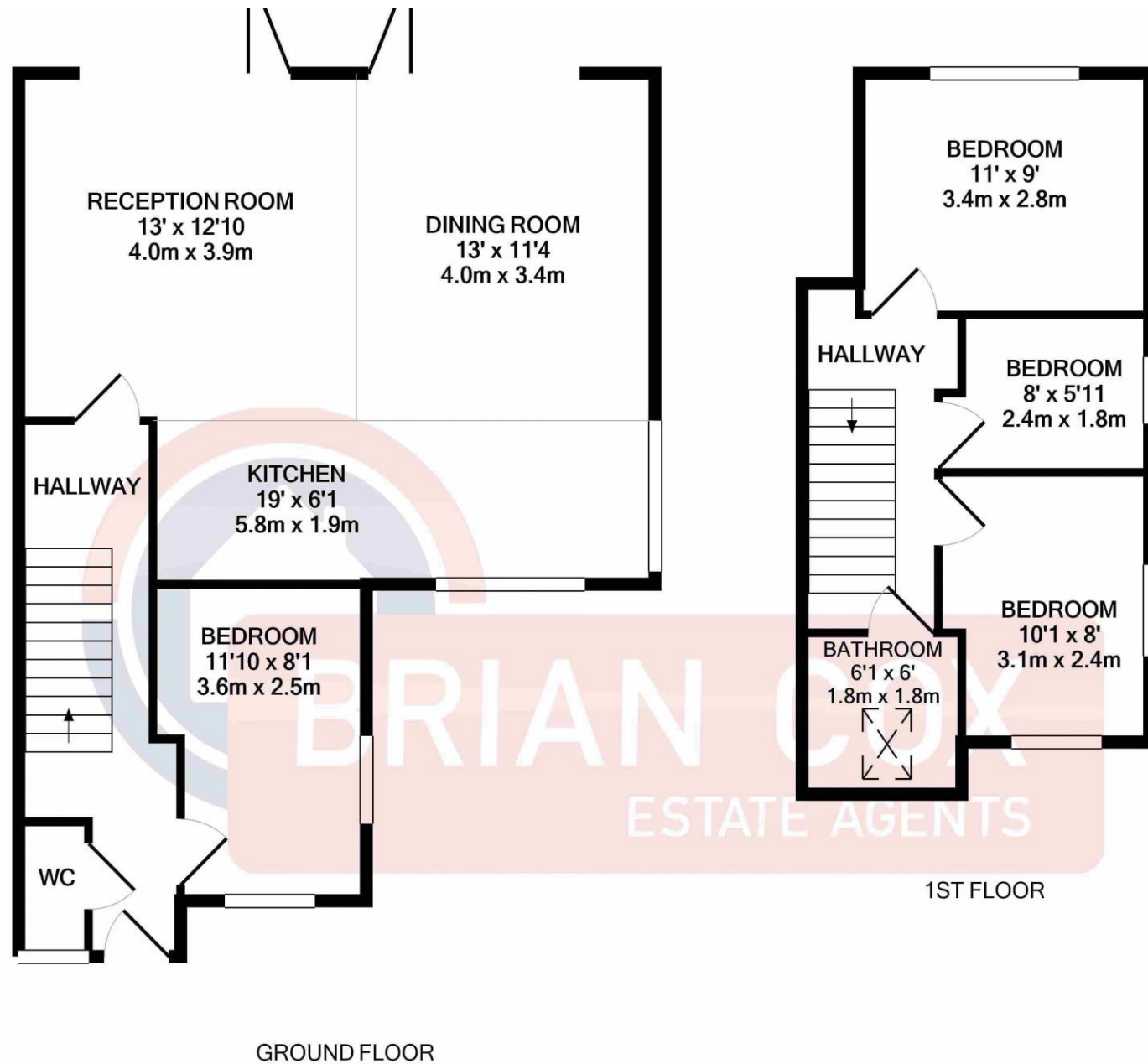


the floorplan...



TOTAL APPROX. FLOOR AREA 1044 SQ.FT. (97.0 SQ.M.)

Whilst every attempt has been made to ensure the accuracy of the floor plan contained here, measurements of doors, windows, rooms and any other items are approximate and no responsibility is taken for any error, omission, or mis-statement. This plan is for illustrative purposes only and should be used as such by any prospective purchaser. The services, systems and appliances shown have not been tested and no guarantee as to their operability or efficiency can be given
Made with Metropix ©2020

more details from...

call: **Brian Cox Northolt: 0208 842 4008**

email: Jeff.Osullivan@brian-cox.co.uk

web: www.brian-cox.co.uk



0208 842 4008
brian-cox.co.uk



HELP TO BUY AVAILABLE! Brian Cox and Company are proud to offer to the market this New build four Bedroom End of Terrace House . The property has a well thought out configuration contributing to a modern, light and spacious feel. Attention to detail is always high on the agenda with a bespoke made to measure kitchen with integrated appliances, All in all this is a beautifully designed home and will be finished to a high standard. This property is not to be missed call now to register for our launch.



£599,950

Freehold

Epsom Close, Northolt UB5 4BH



in brief...

- Help to Buy Available
- Brand New Build
- April 2020 Completion
- Four Bedrooms
- Off Street Parking
- Underfloor Heating



the location...

nearest stations ...

Northolt (0.4 miles)
Northolt Park (0.7 miles)
South Ruislip (1.1 miles)

Northolt is a town located in North West London and lies within zone 5 on the Central Line. There is good access to the West End of London and popular high street shops and restaurants in Ruislip which make the area a good choice for young professionals and families alike.

There are two stations in the area which are Northolt Central Line Tube Station (31 minutes to Tottenham Court Road) and Northolt Park Overground Station. Northolt Park is a Network Rail station served by Chiltern Railways (21 minutes to Marylebone Station).

There are also a number of local bus routes offering access to Heathrow, Ealing, Ruislip and numerous other locations. If you travel by road, the A40 is within easy reach with access to both the city and the Home Counties.

