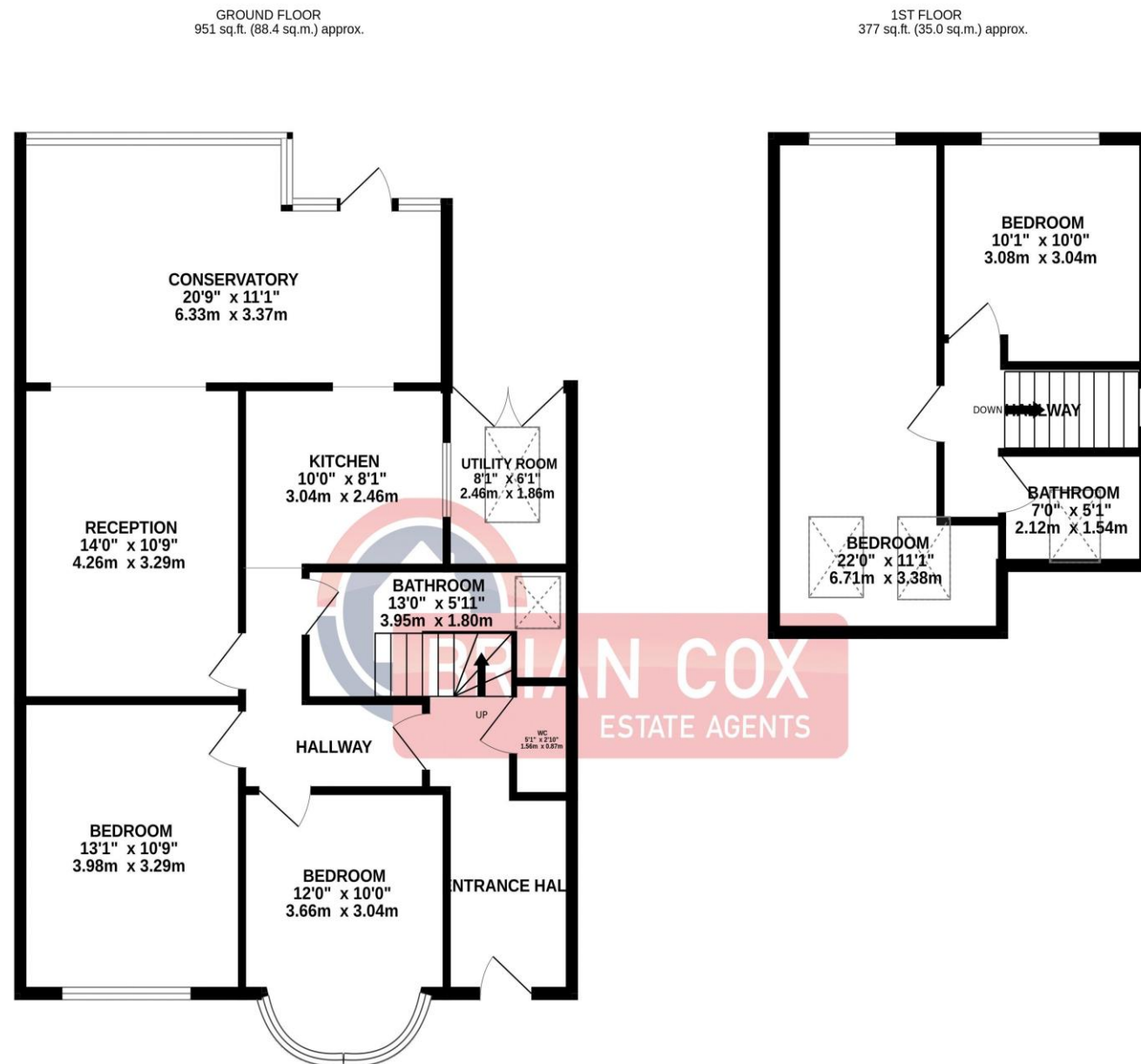


the floorplan...



TOTAL FLOOR AREA: 1328 sq.ft. (123.4 sq.m.) approx.
Whilst every attempt has been made to ensure the accuracy of the floorplan contained here, measurements of doors, windows, rooms and any other items are approximate and no responsibility is taken for any error, omission or mis-statement. This plan is for illustrative purposes only and should be used as such by any prospective purchaser. The services, systems and appliances shown have not been tested and no guarantee as to their operability or efficiency can be given.
Made with Metropix ©2023

more details from...

call: **Brian Cox Northolt: 0208 842 4008**
email: jeff.osullivan@brian-cox.co.uk
web: www.brian-cox.co.uk



0208 842 4008
brian-cox.co.uk



Boasting four double bedrooms and three bathrooms this magnificent home is ideal for the large or growing family looking for extra space. Situated walking distance to Northolt Station and easy access off the A40, it offers an abundance of space, a flexible floorplan and a lovely rear garden. The property has recently been renovated to a very high standard. Other benefits include off street parking and gas central heating. Call early to avoid disappointment.



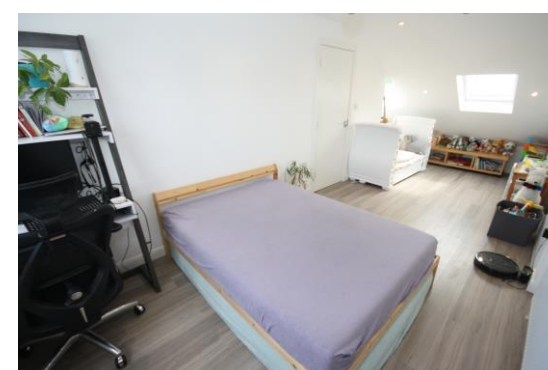
£650,000
Freehold

Dukes Avenue, Northolt UB5 5DA



in brief...

- Loft and Side Extension
- Four Large Double Bedrooms, Two Modern Style Bathrooms + 1 WC
- Off Street Parking for at Least Two Cars
- Conservatory
- Separate Study/Single Room with



the location...

nearest stations ...

Northolt (0.6 miles)

South Ruislip (1.1 miles)

Northolt Park (1.2 miles)

Northolt is a town located in North West London and lies within zone 5 on the Central Line. There is good access to the West End of London and popular high street shops and restaurants in Ruislip which make the area a good choice for young professionals and families alike. There are two stations in the area which are Northolt Central Line Tube Station (31 minutes to Tottenham Court Road) and Northolt Park Overground Station. Northolt Park is a Network Rail station served by Chiltern Railways (21 minutes to Marylebone Station). There are also a number of local bus routes offering access to Heathrow, Ealing, Ruislip and numerous other locations. If you travel by road, the A40 is within easy reach with access to both the city and the Home Counties.