



, Lenchwick, Evesham, WR11 4TG

**SHELDON
BOSLEY
KNIGHT**

LAND AND
PROPERTY
PROFESSIONALS

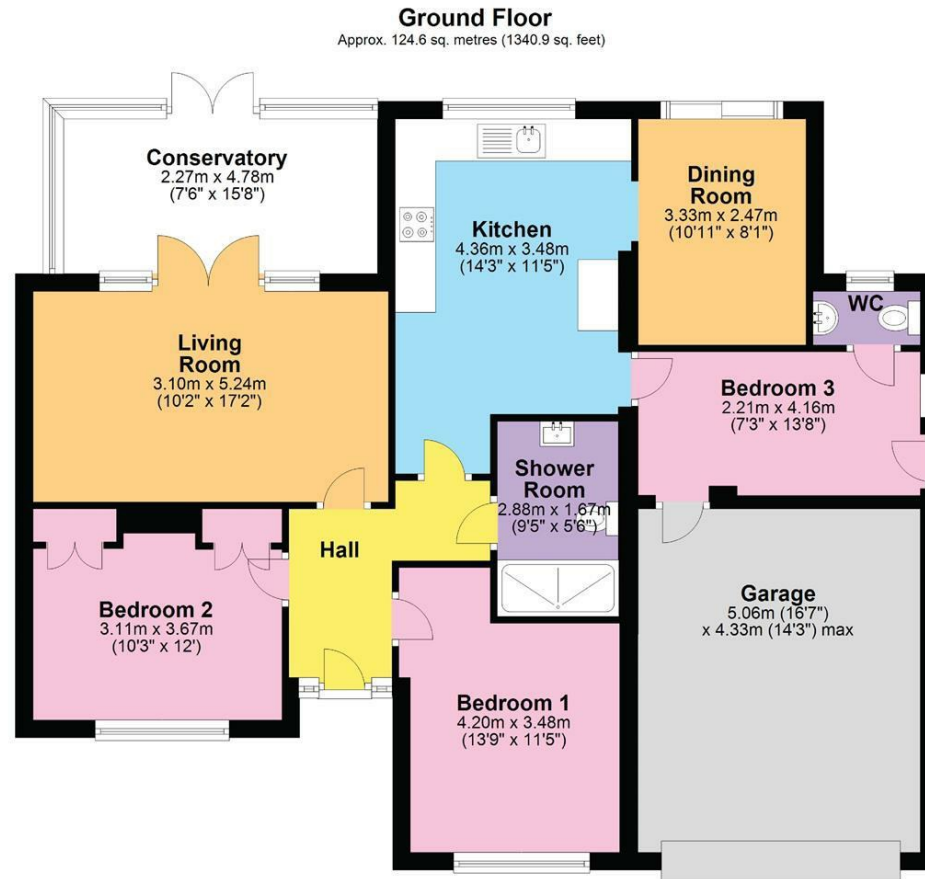
Property Description

**** A TRULY WONDERFUL DETACHED BUNGALOW BACKING OUT ONTO BLACK MONK LAKE ****

A great chance to purchase an immaculately presented three bedroom detached bungalow in a lovely rural location with further scope to extend (STPP). The property comprises; entrance hall, living room, conservatory, separate dining room, three bedrooms and a shower room. The third bedroom could be used as a useful study / utility area. Double garage and driveway with parking for several vehicles. The superb rear garden has patio seating areas, is well stocked with planting, has a summerhouse, shed and greenhouse. Tranquil village location with some lovely countryside walks and friendly, communal village life.







Total area: approx. 124.6 sq. metres (1340.9 sq. feet)

DISCLAIMER - Floor plans shown are for general guidance only. Whilst every attempt has been made to ensure that the floorplan measurements are as accurate as possible, they are for illustrative purposes only.

Key Features

- WELL PRESENTED DETACHED BUNGALOW
- THREE BEDROOMS
- STUNNING POSITION
- OVERLOOKING A LAKE
- AMPLE PARKING
- CONSERVATORY
- BEAUTIFUL GARDENS
- RURAL LIVING

Asking Price
£480,000

EPC Rating -

Tenure - Freehold

Council Tax Band -

Local Authority -