



7 Mount Road, Evesham

Guide Price £475,000





## 7 Mount Road

Evesham, Evesham

Council Tax band: E

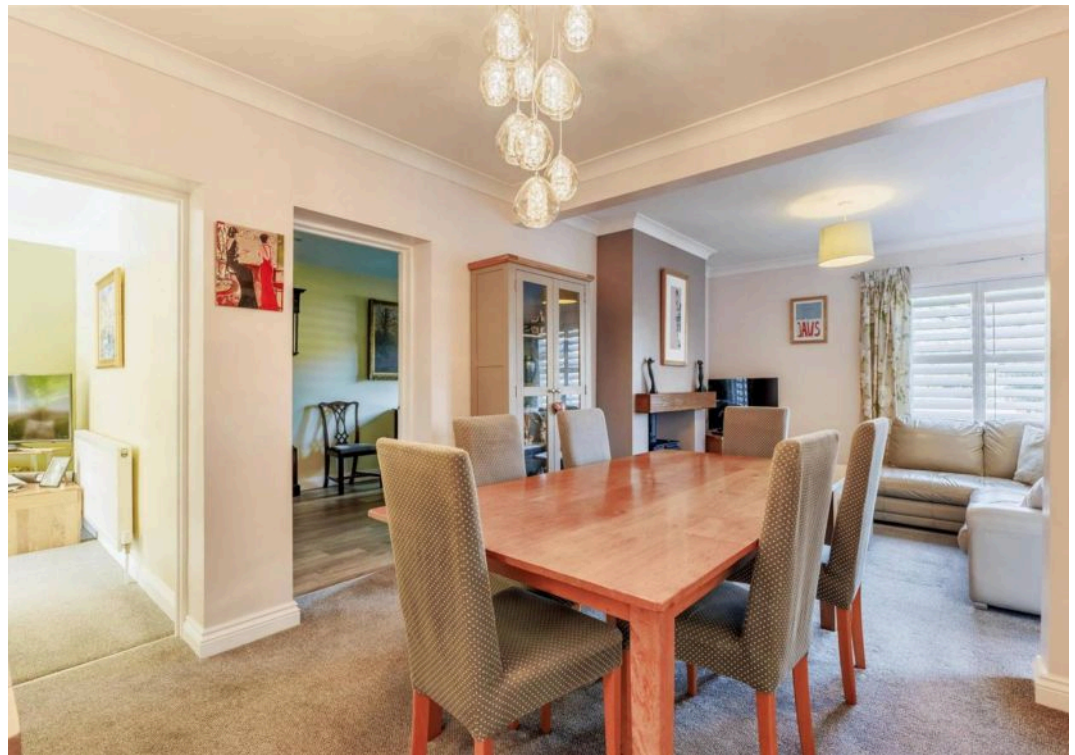
Tenure: Freehold

EPC Energy Efficiency Rating: D

EPC Environmental Impact Rating: D

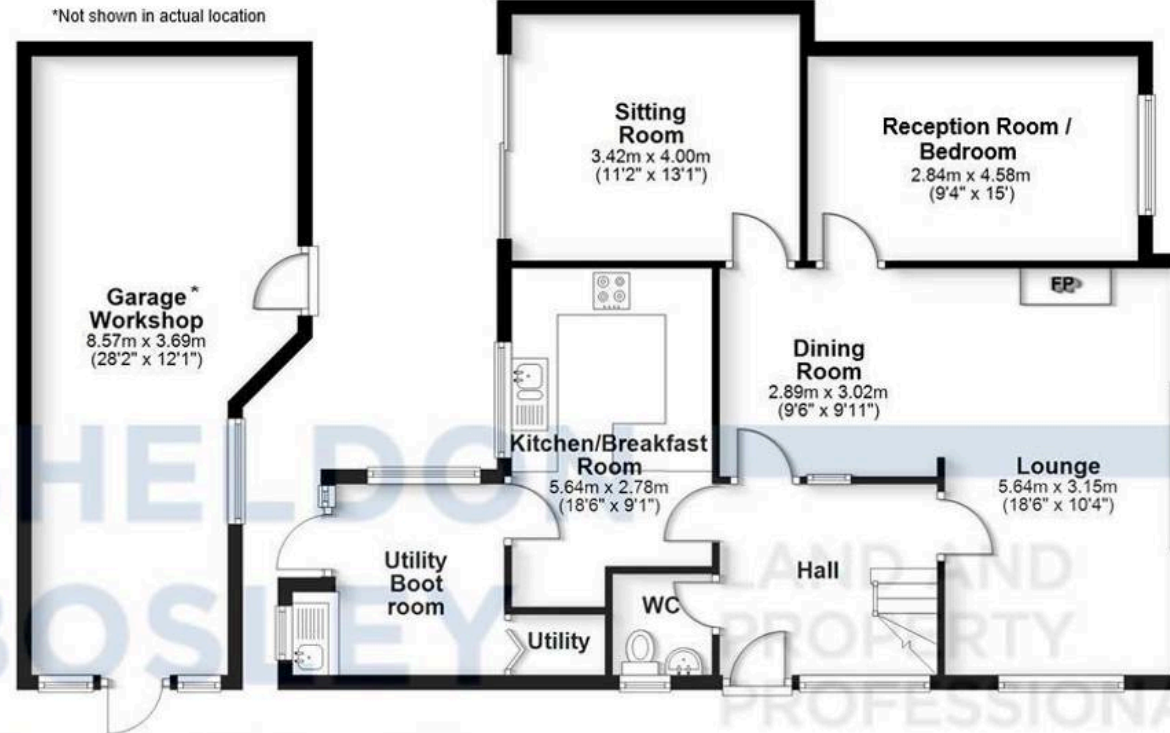
- SPACIOUS THREE/FOUR BEDROOM DETACHED FAMILY HOME
- POPULAR AND WELL-CONNECTED LOCATION IN EVESHAM
- MULTIPLE RECEPTION ROOMS INCLUDING LOUNGE, DINING ROOM & SITTING ROOM
- FLEXIBLE SNUG / FOURTH BEDROOM OPTION
- KITCHEN/BREAKFAST ROOM WITH UTILITY & BOOT ROOM
- DOWNSTAIRS WC & FAMILY BATHROOM
- GARAGE/WORKSHOP & AMPLE DRIVEWAY PARKING
- FRONT GARDEN LAID TO LAWN
- REAR GARDEN WITH LAWN, PATIO, DECKING & GAZEBO
- EPC RATING = D





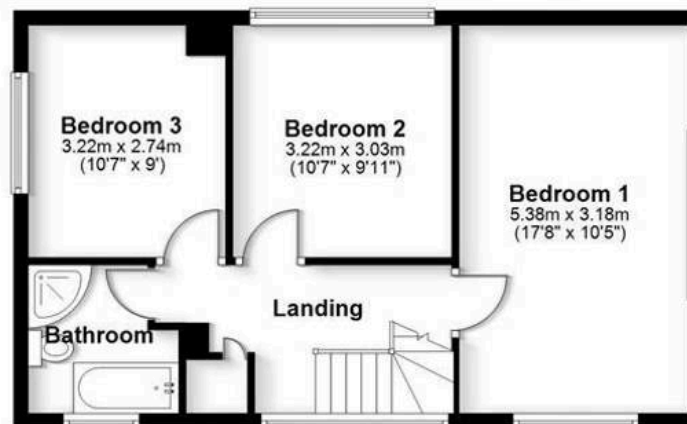
## Ground Floor

Approx. 114.6 sq. metres (1233.2 sq. feet)



## First Floor

Approx. 49.2 sq. metres (529.2 sq. feet)



Total area: approx. 163.7 sq. metres (1762.3 sq. feet)

All efforts have been made to ensure the measurements are accurate on this floor plan, however these are for guidance purposes only.  
Plan produced using PlanUp.