



## 14 Lindsey Avenue, Evesham

Guide Price **£230,000**





## 14 Lindsey Avenue

Evesham, Evesham

Council Tax band: C

Tenure: Freehold

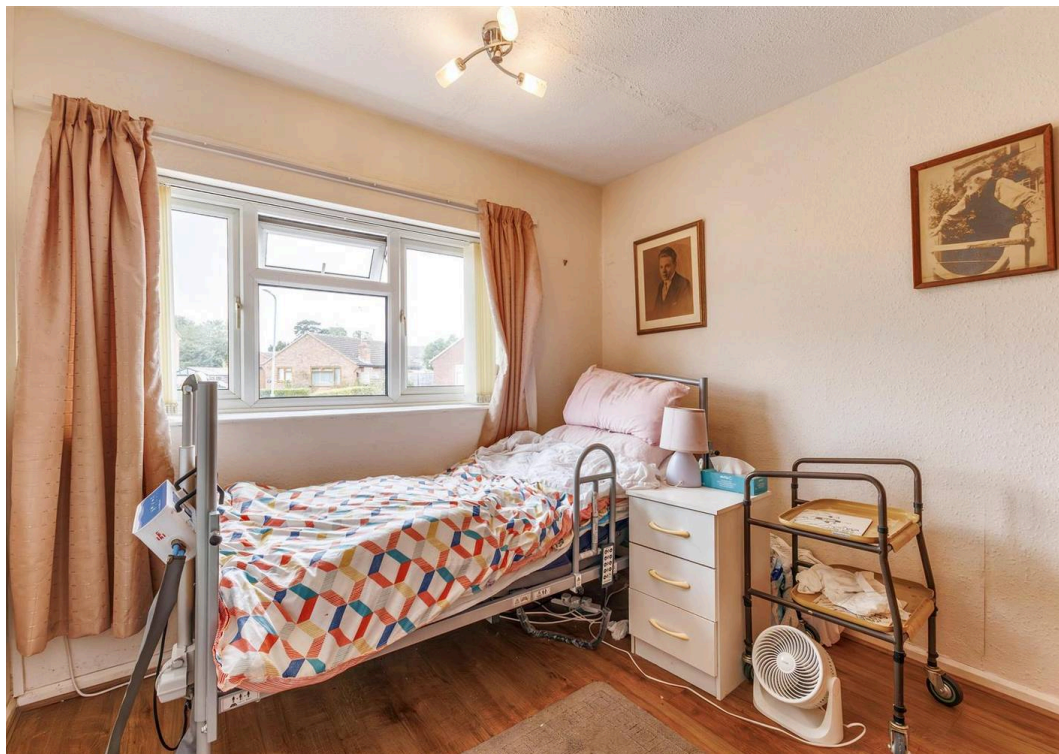
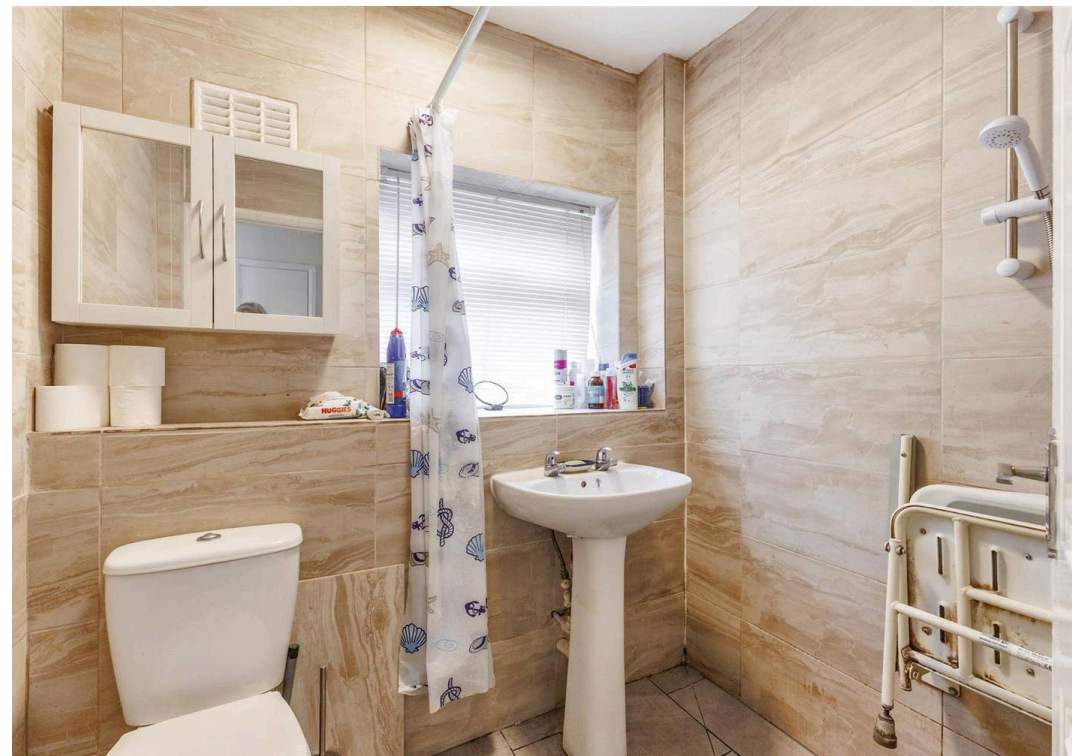
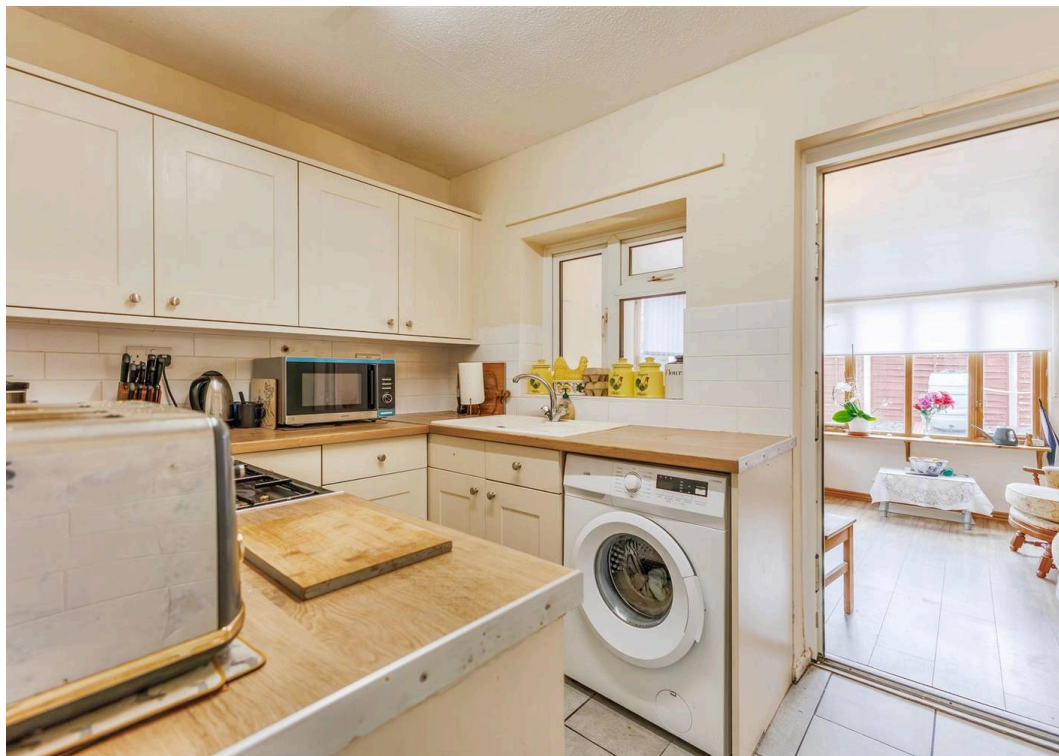
EPC Energy Efficiency Rating: D

EPC Environmental Impact Rating: D

- TWO BEDROOM, SEMI-DETACHED BUNGALOW
- MODERN
- PEACEFUL CUL-DE-SAC POSITION
- OFF ROAD PARKING AND PRIVATE LOW MAINTENANCE GARDEN
- TWO RECEPTION ROOMS
- CLOSE TO LOCAL AMENITIES



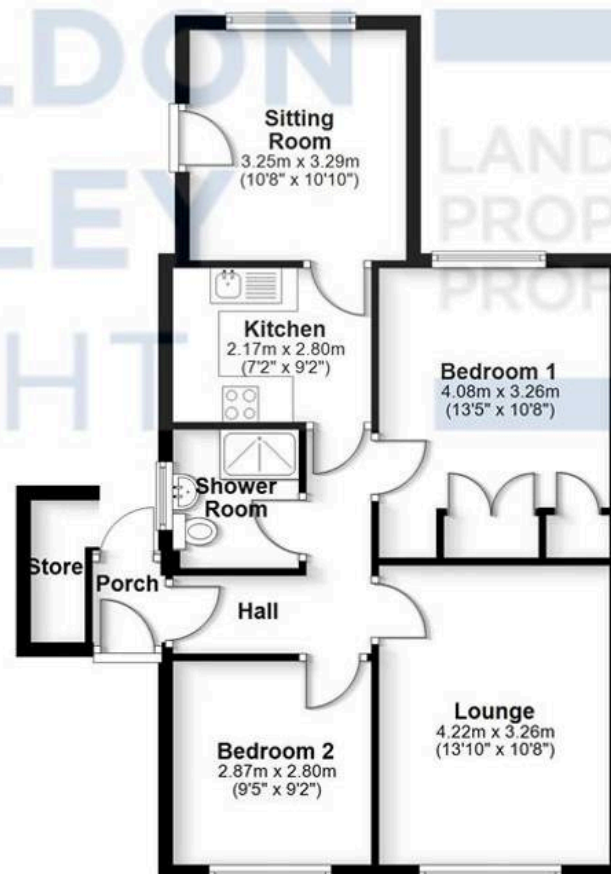






## Ground Floor

Approx. 70.9 sq. metres (763.4 sq. feet)



Total area: approx. 70.9 sq. metres (763.4 sq. feet)

All efforts have been made to ensure the measurements are accurate on this floor plan, however these are for guidance purposes only.  
Plan produced using PlanUp.