



Station Villas, Tewkesbury, GL20 7LU

**SHELDON
BOSLEY
KNIGHT**

LAND AND
PROPERTY
PROFESSIONALS

Property Description

*** AVAILABLE MID DECEMBER -
DEPOSIT ALTERNATIVE AVAILABLE ***

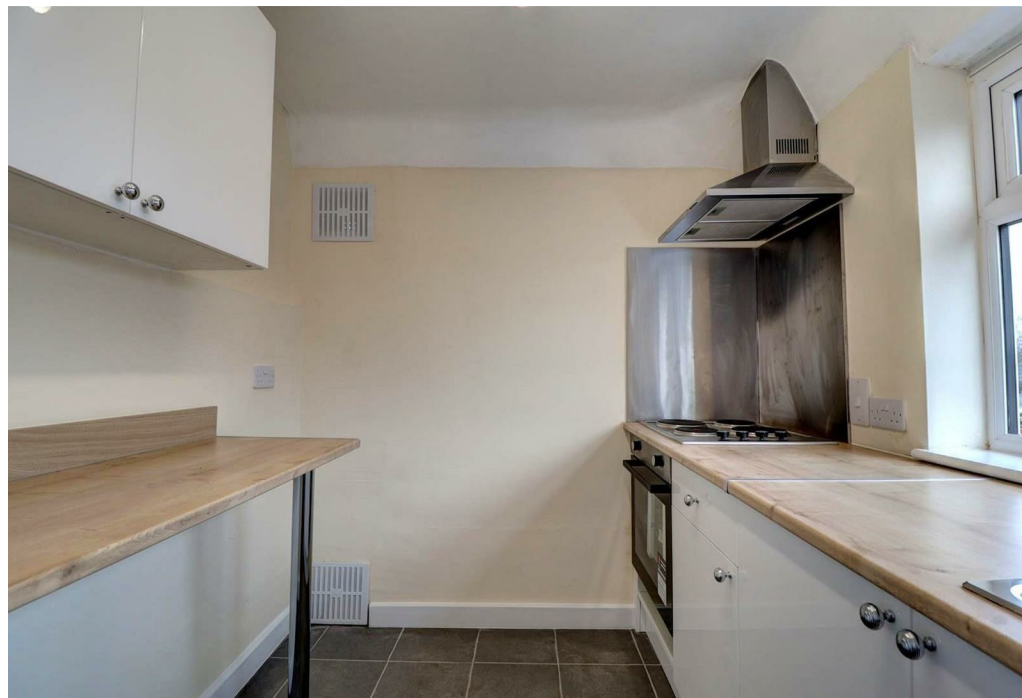
A recently renovated one-bedroom bungalow situated in the picturesque village of Bredon, set on the southern edge of Worcestershire near the River Avon and the lower slopes of Bredon Hill—widely regarded as the beginning of the Cotswolds. The village offers a charming community feel while providing good access to surrounding towns and amenities.

The accommodation comprises a hallway, a light and comfortable living room, a fitted kitchen with space for a washing machine and fridge, a double bedroom, and a bathroom with a full suite including shower-over-bath.

Externally, the property enjoys a secure and private lawned garden with a patio area that wraps around the property.

This property is offered UNFURNISHED.
Council Tax Band C
Energy Rating D
Initial 12 Month Tenancy







Key Features

- AVAILABLE MID DECEMBER
- Village of Bredon
- One Bedroom
- Bungalow
- Unfurnished
- Recently Renovated
- Parking Space & Private Garden
- Council Tax Band C
- Energy Rating D
- Initial 12 Month Tenancy

£850 PCM