



Masons Court, Evesham, WR11 3DG

**SHELDON
BOSLEY
KNIGHT**

LAND AND
PROPERTY
PROFESSIONALS

Property Description

TWO-BEDROOM END OF TERRACE HOME IN POPULAR LOCATION

Situated in the sought-after area of Bengeworth, this well-presented two-bedroom end of terrace home offers an excellent opportunity for first-time buyers or investors. The property is ideally located close to local amenities, schools, and Evesham town centre, with parking conveniently positioned to the rear.

The accommodation comprises a welcoming lounge leading through to a kitchen/breakfast room, which in turn opens into a bright conservatory overlooking the garden. Upstairs, there are two good-sized double bedrooms and a family bathroom.

Externally, the rear garden is mainly laid to lawn with space for seating and direct access to the rear parking area.

This property offers practical living in a popular location and is perfectly suited to those looking for their first home or an investment opportunity.

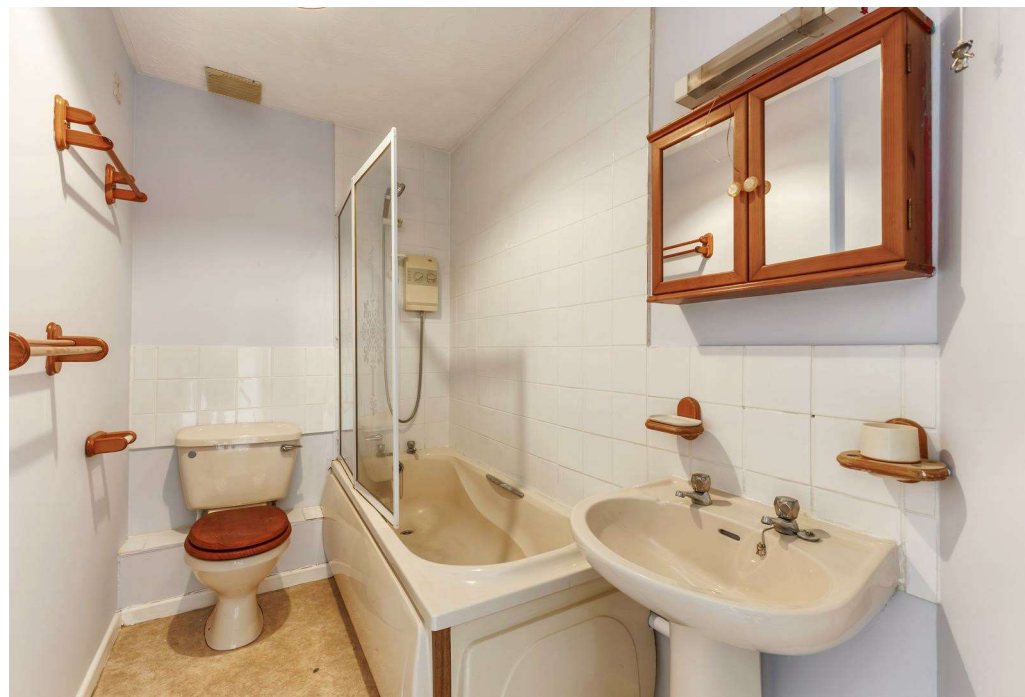




Key Features

- CHAIN FREE
- TWO BEDROOM END OF TERRACE HOME
- LOUNGE, KITCHEN/BREAKFAST ROOM & CONSERVATORY
- TWO DOUBLE BEDROOMS & FAMILY BATHROOM
- REAR GARDEN WITH ACCESS TO PARKING
- POPULAR BENEGWORTH LOCATION
- CLOSE TO AMENITIES & EVESHAM TOWN CENTRE
- IDEAL FIRST-TIME BUY OR INVESTMENT
- EPC RATING = D

Guide Price
£195,000



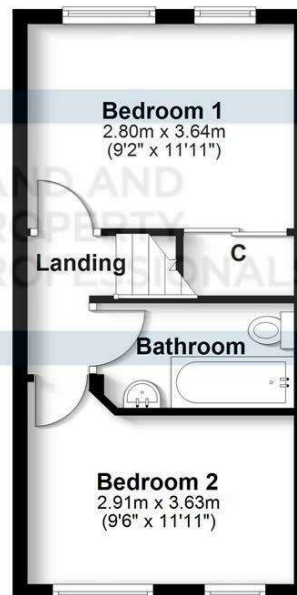
Ground Floor

Approx. 35.5 sq. metres (382.5 sq. feet)



First Floor

Approx. 27.9 sq. metres (300.1 sq. feet)



Total area: approx. 63.4 sq. metres (682.6 sq. feet)

All efforts have been made to ensure the measurements are accurate on this floor plan, however these are for guidance purposes only.
Plan produced using PlanUp.



EPC Rating - D

Tenure - Freehold

Council Tax Band - B

Local Authority
Wychavon District Council



We routinely refer clients to both our recommended legal firm and a panel of financial services providers. It is your decision whether you choose to deal with these companies. In making that decision, you should know that we receive a referral fee.

**SHELDON
BOSLEY
KNIGHT**

LAND AND
PROPERTY
PROFESSIONALS