



University Fields, Evesham, WR11 2TD

**SHELDON
BOSLEY
KNIGHT**

LAND AND
PROPERTY
PROFESSIONALS

Property Description

MODERN THREE-BEDROOM HOME ON POPULAR DEVELOPMENT

Situated on the highly sought-after Evesham Gate development, this modern three-bedroom semi-detached house offers stylish and energy-efficient living, complete with solar panels and EV charging capability.

The accommodation comprises a welcoming entrance hall, spacious lounge, and a contemporary kitchen/breakfast room with French doors opening onto the rear garden. A useful utility area and downstairs WC complete the ground floor.

Upstairs, there are three well-proportioned bedrooms, with the principal bedroom benefitting from an en-suite shower room. The remaining bedrooms are served by a modern family bathroom.

Externally, the property features a lawned rear garden with patio area, outside electrics for an EV charger, and gated rear access leading to the parking area at the side of the house.





Key Features

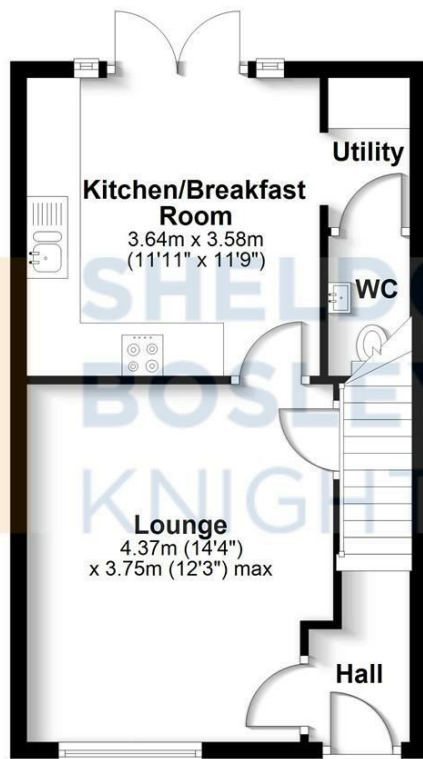
- MODERN THREE-BEDROOM SEMI-DETACHED HOUSE
- LOCATED ON THE POPULAR EVESHAM GATE DEVELOPMENT
- SPACIOUS LOUNGE & KITCHEN/BREAKFAST ROOM
- PRINCIPAL BEDROOM WITH EN-SUITE
- SOLAR PANELS & EV CHARGER CONNECTION
- DRIVEWAY PARKING TO THE SIDE
- LAWNED GARDEN WITH PATIO AREA & REAR ACCESS
- EPC RATING: B

Guide Price
£315,000



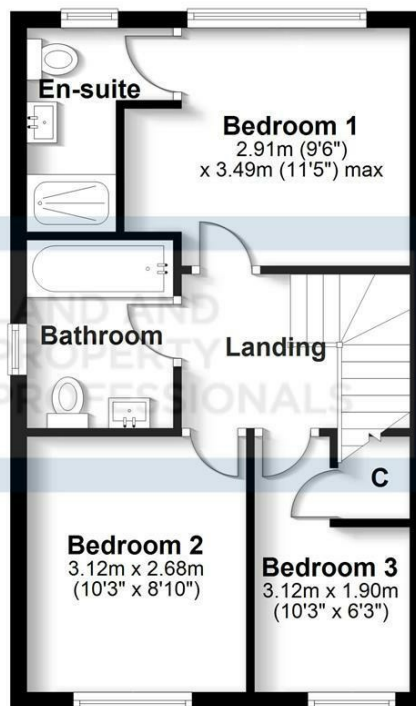
Ground Floor

Approx. 37.9 sq. metres (408.4 sq. feet)



First Floor

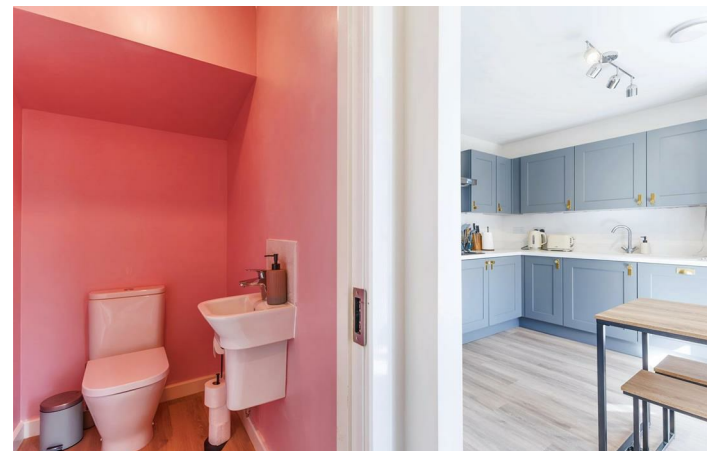
Approx. 37.9 sq. metres (408.4 sq. feet)



Total area: approx. 75.9 sq. metres (816.8 sq. feet)

All efforts have been made to ensure the measurements are accurate on this floor plan, however these are for guidance purposes only.

Plan produced using PlanUp.



EPC Rating - B

Tenure - Freehold

Council Tax Band - C

Local Authority
Wychavon District Council



We routinely refer clients to both our recommended legal firm and a panel of financial services providers. It is your decision whether you choose to deal with these companies. In making that decision, you should know that we receive a referral fee.

**SHELDON
BOSLEY
KNIGHT**

LAND AND
PROPERTY
PROFESSIONALS