



Shepherds Pool, Evesham, WR11 4JF

**SHELDON
BOSLEY
KNIGHT**

LAND AND
PROPERTY
PROFESSIONALS

Property Description

CHAIN FREE - RENOVATED APARTMENT - CLOSE TO LOCAL AMENITIES

This immaculate one-bedroom apartment is offered to the market with no onward chain and is ideally situated within walking distance of local shops, the railway station, and Evesham town centre.

The well-presented accommodation includes a communal entrance with hallway and stairs leading to the second-floor landing. Inside the apartment, a welcoming entrance hall with storage space gives access to a bright and spacious open-plan lounge/kitchen/diner, a double bedroom, and a shower room complete with airing cupboard.

Externally, the property benefits from allocated parking, making it an ideal purchase for first-time buyers, downsizers, or investors.

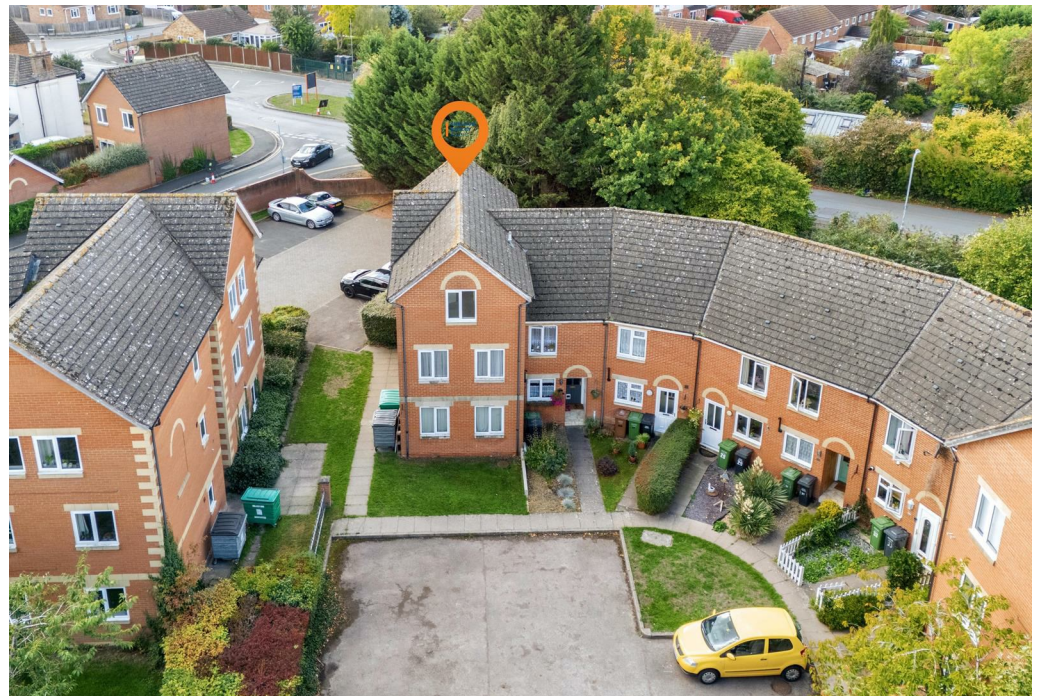




Key Features

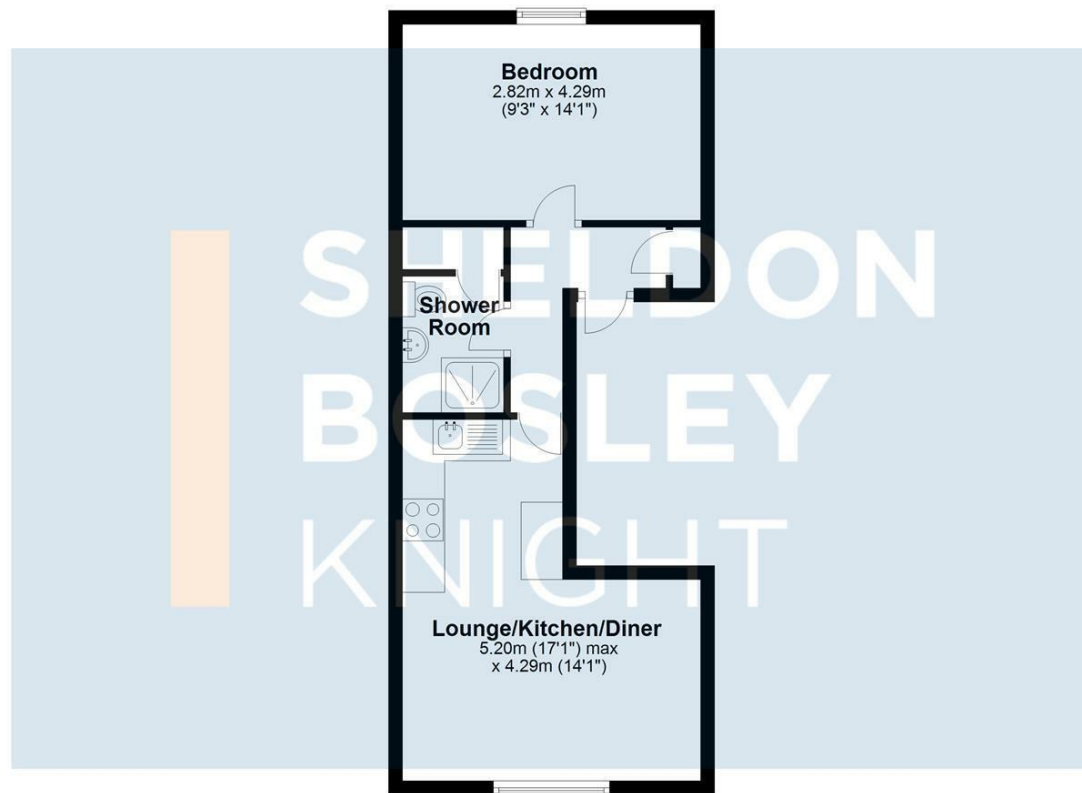
- ONE DOUBLE BEDROOM
- OPEN-PLAN LOUNGE/KITCHEN/DINER
- SHOWER ROOM WITH AIRING CUPBOARD
- RENOVATED AND WELL PRESENTED THROUGHOUT
- CHAIN FREE SALE
- ALLOCATED PARKING
- WALKING DISTANCE TO SHOPS, RAILWAY STATION & TOWN CENTRE
- EPC RATING = D

**Guide Price
£100,000**



Ground Floor

Approx. 38.4 sq. metres (413.1 sq. feet)



Total area: approx. 38.4 sq. metres (413.1 sq. feet)

All efforts have been made to ensure that the measurements on this floorplan are accurate however these are for guidance purposes only.
Plan produced using PlanUp.



EPC Rating - D

Tenure - Leasehold

Council Tax Band - B

Local Authority
Wychavon District Council



We routinely refer clients to both our recommended legal firm and a panel of financial services providers. It is your decision whether you choose to deal with these companies. In making that decision, you should know that we receive a referral fee.

**SHELDON
BOSLEY
KNIGHT**

LAND AND
PROPERTY
PROFESSIONALS