



Pershore Road, Evesham, WR11 2PQ

**SHELDON
BOSLEY
KNIGHT**

LAND AND
PROPERTY
PROFESSIONALS

Property Description

*** AVAILABLE NOW – Part Furnished ***

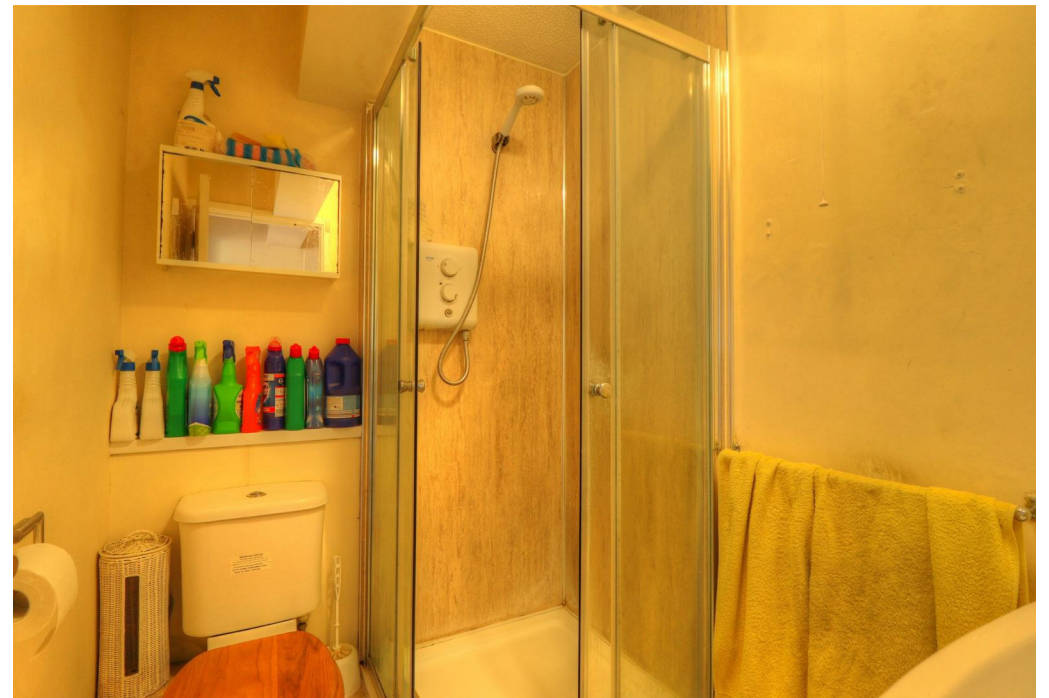
Sheldon Bosley Knight are pleased to present this well-appointed one-bedroom top floor annexe, set back from the main road in the desirable village of Hampton, Evesham. Offering peaceful surroundings and easy access to the River Avon—with a charming hand-pulled ferry connecting to Evesham town centre—this self-contained property is ideal for a single professional seeking a quiet yet convenient location.

The accommodation comprises a private entrance with hallway and stairs leading to a light and airy open-plan kitchen/living area. The kitchen is fitted with a range of wall and base units and includes appliances such as a washing machine and fridge. The double bedroom benefits from a built-in wardrobe, and the shower room is modern and well-maintained.

Further benefits include one allocated parking space to the front of the property.

Council Tax Band: A | EPC Rating: E | Initial 12-Month Tenancy







Key Features

- AVAILABLE NOW
- Hampton
- One Bedroom
- Top Floor Annexe
- Part Furnished
- Off Road Parking
- Peaceful Surroundings
- Council Tax Band A
- Energy Rating E
- Initial 12 Month Tenancy

£685 PCM