



Pershore Road, Evesham, WR11 2LU

**SHELDON
BOSLEY
KNIGHT**

LAND AND
PROPERTY
PROFESSIONALS

Property Description

This well-presented three-bedroom detached home is located in the popular Hampton area near Evesham and is offered to the market chain free. The property is in very good condition throughout and offers a practical layout ideal for families, first-time buyers, or anyone seeking a low-maintenance home in a convenient setting.

The ground floor features a spacious living room with ample natural light and a pleasant bay window. To the rear is a generous kitchen with space for dining, and an adjoining utility area that provides useful extra storage and laundry space. The flow between rooms makes this a comfortable home for everyday living and entertaining.

Upstairs, the accommodation includes three well-proportioned bedrooms, including a good-sized main bedroom, and a stylish shower room.

Externally, the rear garden is low maintenance, enclosed by fencing and feature walls, and includes a private seating area. The property also benefits from off-road parking with a gravelled driveway to the side, and gated access to the rear.

With gas central heating, double glazing, and no onward chain, this is a great opportunity to move straight into a tidy, well-maintained home in a desirable part of town.



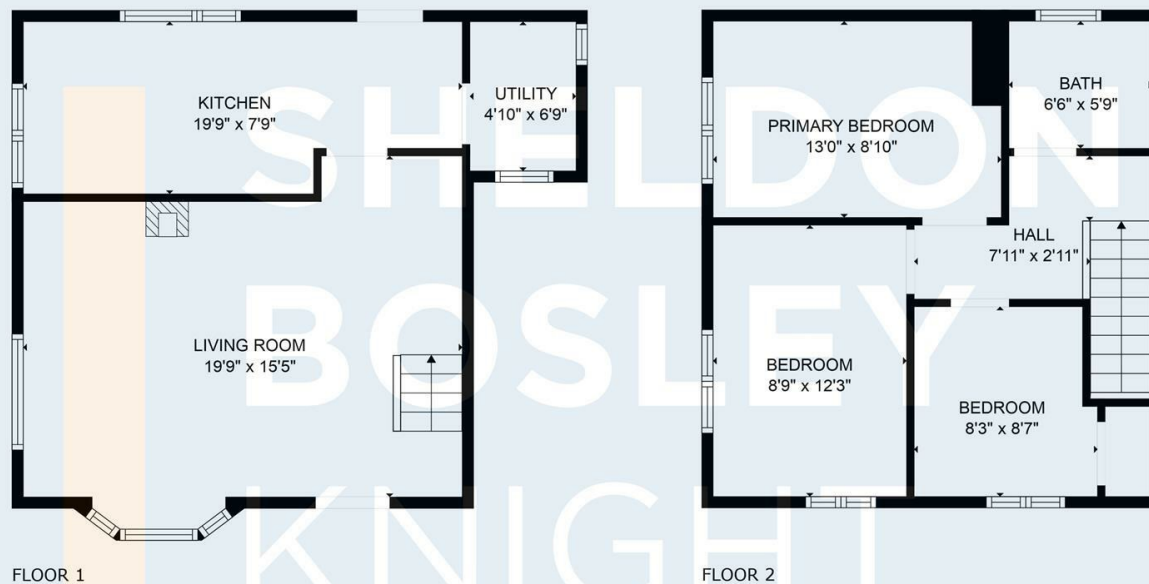


Key Features

- DETACHED THREE BEDROOM HOUSE
- LOCATED IN HAMPTON, EVESHAM
- OFFERED WITH NO ONWARD CHAIN
- WELL PRESENTED THROUGHOUT
- SPACIOUS LOUNGE WITH BAY WINDOW
- KITCHEN WITH DINING AREA
- USEFUL UTILITY SPACE
- LOW MAINTENANCE REAR GARDEN
- OFF-ROAD PARKING WITH GATED ACCESS
- EPC RATING = C

Guide Price
£265,000





TOTAL: 882 sq. ft
 FLOOR 1: 458 sq. ft, FLOOR 2: 424 sq. ft
 EXCLUDED AREAS: BAY WINDOW: 8 sq. ft
Measurements are calculated accurately but are not guaranteed.



EPC Rating - C

Tenure - Freehold

Council Tax Band - D

Local Authority
 Wychavon District Council



We routinely refer clients to both our recommended legal firm and a panel of financial services providers. It is your decision whether you choose to deal with these companies. In making that decision, you should know that we receive a referral fee.

**SHELDON
BOSLEY
KNIGHT**

LAND AND
PROPERTY
PROFESSIONALS