



Lansdowne Mews, Evesham, WR11 1WY

**SHELDON  
BOSLEY  
KNIGHT**

LAND AND  
PROPERTY  
PROFESSIONALS



# Property Description

This two-bedroom end of terrace home is situated in the sought-after area of Bengeworth in Evesham, offering an ideal opportunity for first-time buyers or property investors.

The entrance hall leads into a spacious lounge/dining room with a feature bay window and fireplace. To the rear is a fitted kitchen with a door opening out to the garden.

Upstairs, there are two bedrooms and a family bathroom, all accessed from the landing.

Outside, there is off-road parking at the front, and a low-maintenance garden at the rear. This property would make an ideal first home or investment opportunity.







## Key Features

- TWO BEDROOM END OF TERRACE HOME
- LOCATED IN POPULAR BENGWORTH AREA
- ENTRANCE HALL
- LOUNGE/DINER
- FEATURE BAY WINDOW AND FIREPLACE
- FITTED KITCHEN WITH GARDEN ACCESS
- TWO DOUBLE BEDROOMS
- FAMILY BATHROOM
- OFF-ROAD PARKING AND REAR GARDEN
- EPC RATING = C

**Guide Price**  
**£185,000**

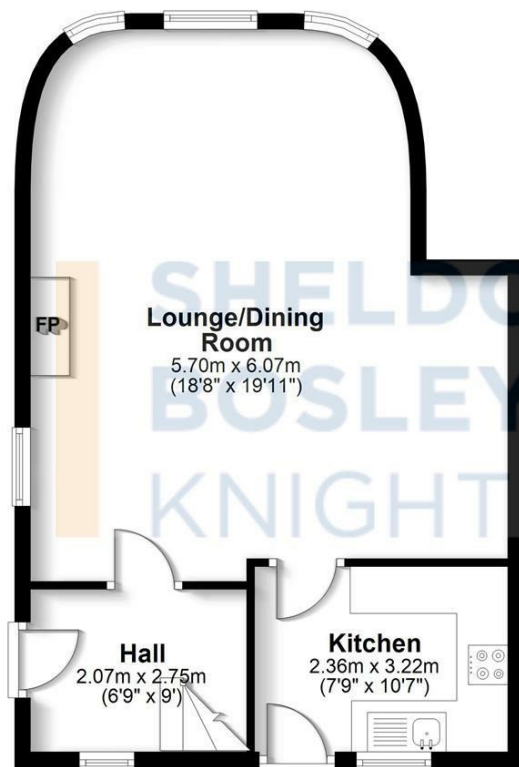






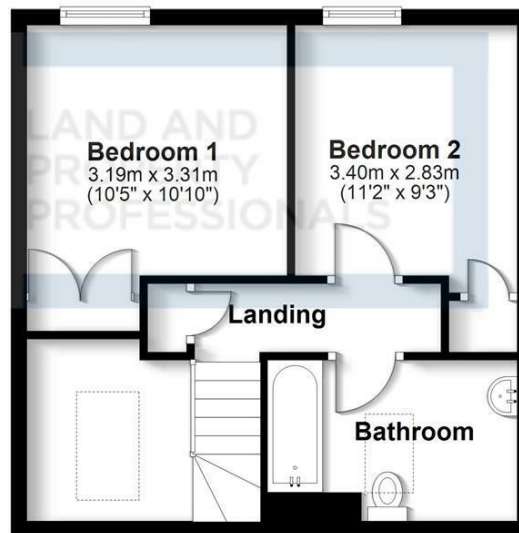
## Ground Floor

Approx. 52.2 sq. metres (561.4 sq. feet)



## First Floor

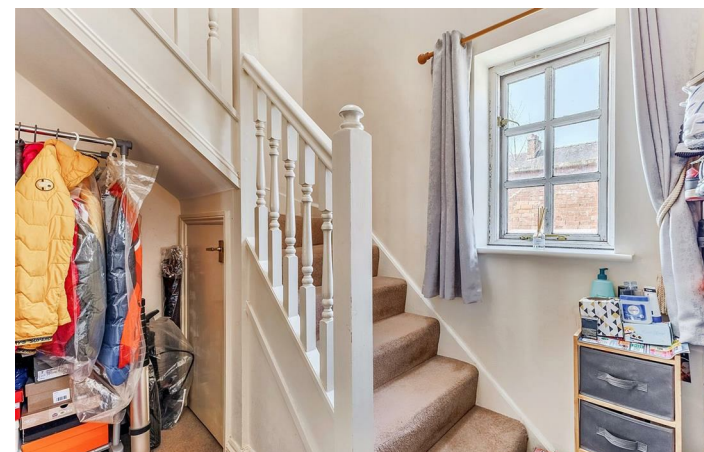
Approx. 39.4 sq. metres (423.9 sq. feet)



Total area: approx. 91.5 sq. metres (985.3 sq. feet)

All efforts have been made to ensure the measurements are accurate on this floor plan, however these are for guidance purposes only.

Plan produced using PlanUp.



EPC Rating - C

Tenure - Leasehold

Council Tax Band - C

Local Authority  
Wychavon District Council





We routinely refer clients to both our recommended legal firm and a panel of financial services providers. It is your decision whether you choose to deal with these companies. In making that decision, you should know that we receive a referral fee.

**SHELDON  
BOSLEY  
KNIGHT**

LAND AND  
PROPERTY  
PROFESSIONALS