



Blacksmiths Close, Sedgeberrow, WR11 7UP

**SHELDON
BOSLEY
KNIGHT**

LAND AND
PROPERTY
PROFESSIONALS

Property Description

Situated in a highly sought-after and quiet close, this detached bungalow is offered to the market with no onward chain, providing excellent space and accommodation.

Upon entering, you are welcomed into a spacious entrance hall with access to two double bedrooms, both featuring built-in wardrobes. The property also includes a shower room, a separate WC, and an airing cupboard. The generous living room benefits from sliding doors leading to the rear garden, while the dining room offers flexibility and could serve as a third bedroom if desired. The fitted kitchen/breakfast room provides ample space, and there is convenient internal access to the single garage, which features power, lighting, an electrical roller door, and additional rear garden access.

The rear garden is primarily laid to lawn and enclosed by fencing, offering potential for enhancement with some maintenance. Side access leads to the front of the property, where you'll find a driveway and a low-maintenance front garden.

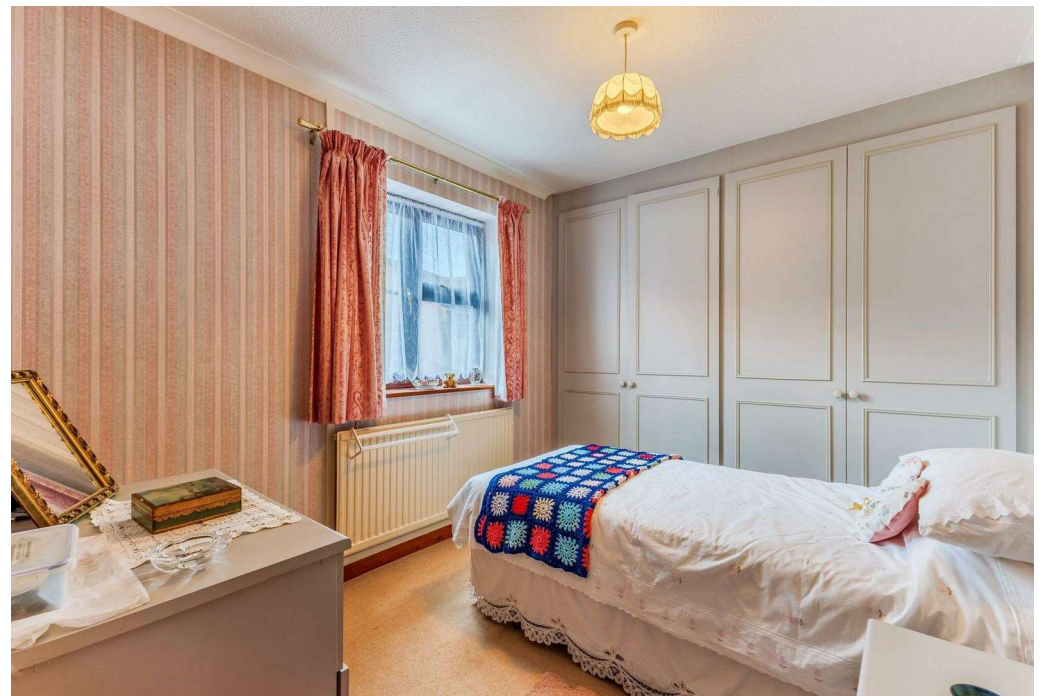


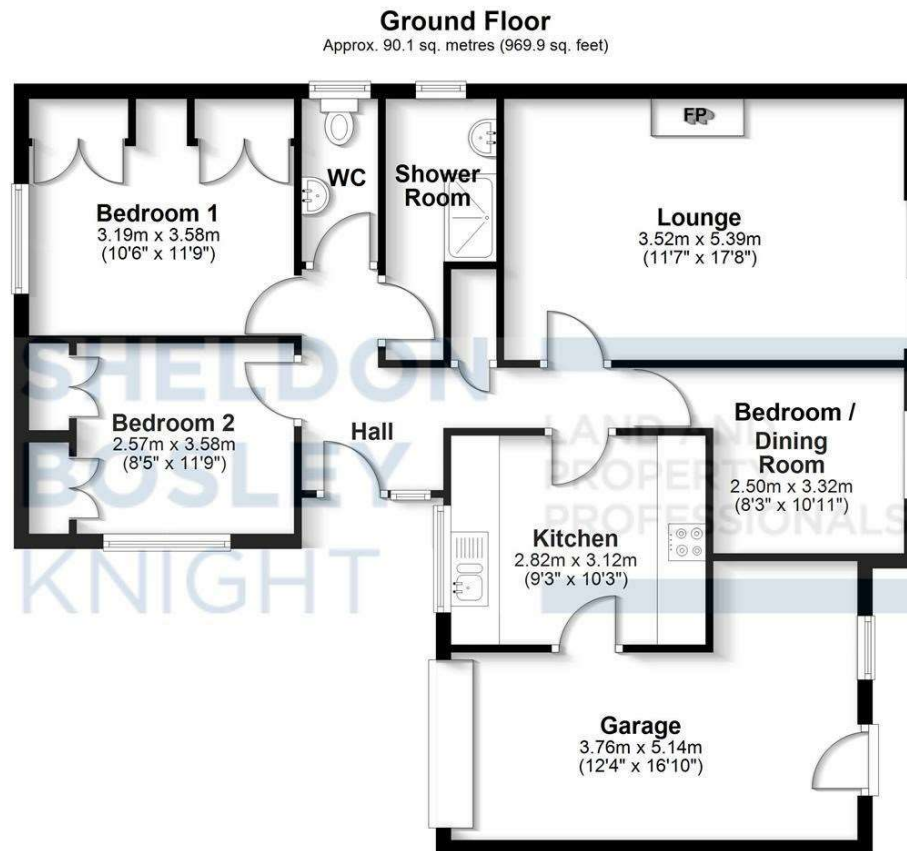


Key Features

- SOUGHT-AFTER & QUIET CLOSE
- TWO DOUBLE BEDROOMS
- FLEXIBLE LAYOUT
- SPACIOUS LIVING ROOM
- FITTED KITCHEN/BREAKFAST ROOM
- BATHROOM & SEPARATE WC
- INTEGRAL GARAGE
- SPACIOUS REAR GARDEN
- DRIVEWAY & LOW-MAINTENANCE FRONT GARDEN
- EPC RATING = E

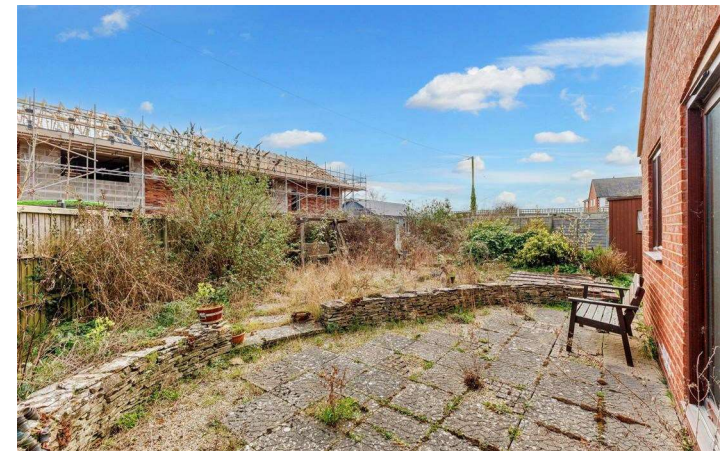
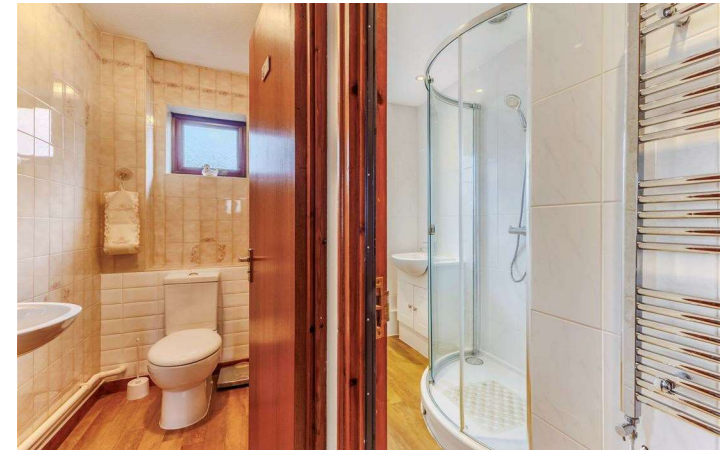
Guide Price
£300,000





Total area: approx. 90.1 sq. metres (969.9 sq. feet)

All efforts have been made to ensure the measurements are accurate on this floor plan, however these are for guidance purposes only.
Plan produced using PlanUp.



EPC Rating - E

Tenure - Freehold

Council Tax Band - D

Local Authority
Wychavon District Council



We routinely refer clients to both our recommended legal firm and a panel of financial services providers. It is your decision whether you choose to deal with these companies. In making that decision, you should know that we receive a referral fee.

**SHELDON
BOSLEY
KNIGHT**

LAND AND
PROPERTY
PROFESSIONALS