



Larkspur Drive, Evesham, WR11 2NJ

**SHELDON
BOSLEY
KNIGHT**

LAND AND
PROPERTY
PROFESSIONALS

Property Description

We are delighted to present this rare opportunity to acquire a beautifully renovated and extended five-bedroom detached home, nestled in a private close within the highly sought-after Thistledown estate.

Lovingly enhanced by the current owners, this property offers a spacious and inviting family home, thoughtfully designed for modern living.

The accommodation comprises a welcoming entrance hall with stairs leading to the first floor, a bright and spacious living room, a well-appointed fitted kitchen, a dining room, and a versatile family room with views over the garden. Additional ground-floor features include a utility room, a WC, and a separate office/study, perfect for those working from home.

Upstairs, there are five generously proportioned bedrooms, with the primary bedroom benefitting from a private en-suite shower room. The family bathroom features both a bath and a separate shower. Bedrooms one and two include built-in wardrobes, while the landing provides access to the loft and an airing cupboard for additional storage.

Externally, the rear garden is a highly desirable outdoor space, mainly laid to lawn with a patio area, mature flower beds, and side access to the front. The property also boasts a double garage with power, lighting, and two electric roller doors, alongside ample off-road parking at the front.

This exceptional home offers a perfect balance of style, space, and practicality in a fantastic location.





Key Features

- DETACHED FAMILY HOME ON PRIVATE CLOSE
- FIVE BEDROOMS
- SPACIOUS LIVING ROOM & FAMILY ROOM
- KITCHEN / DINER
- OFFICE
- UTILITY ROOM
- FAMILY BATHROOM, EN-SUITE SHOWER ROOM TO THE PRIMARY BEDROOM & GROUND FLOOR WC
- DOUBLE GARAGE & GENEROUS PARKING
- REAR GARDEN
- EPC = C

Guide Price
£525,000

Location

Ideally situated just 1.5 miles from Evesham town centre, this property offers convenient access to a wealth of local amenities.

The historic market town of Evesham boasts a diverse range of facilities, including banks, supermarkets, a post office, a variety of bars and eateries, and schools catering to all ages. The town benefits from a direct train line to London and excellent road links, providing easy access to the motorway network.

Evesham also offers scenic riverside parks and a range of leisure amenities, making it an ideal location for both relaxation and recreation. Additionally, the town is well-positioned within 15 miles of the larger centres of Cheltenham, Worcester, and Stratford-upon-Avon, while the picturesque Cotswolds are just a short drive away.

Additional Information

Tenure: Freehold

Local Authority: Wychavon District Council

Council Tax Band: Band E

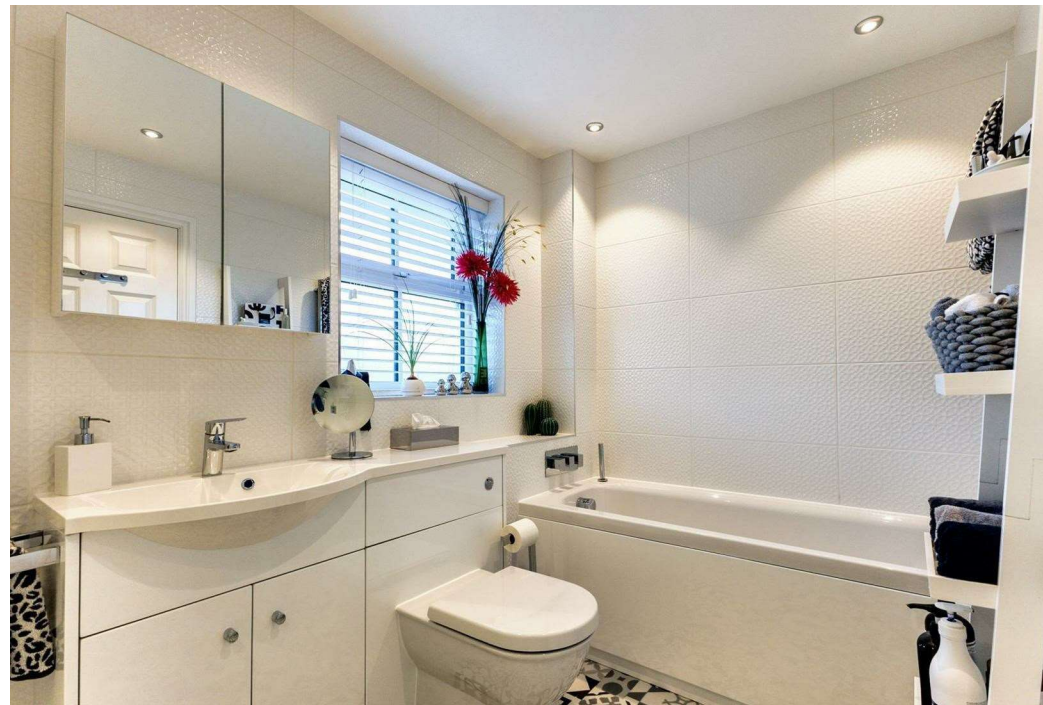
EPC Rating: C

Agents Note

(i) All descriptions, dimensions, reference to condition and necessary permissions for use and occupation, and other details are given without responsibility and any intending buyers should not rely on them as statements of fact, but must satisfy themselves by inspection or otherwise as to the correctness of each of them.

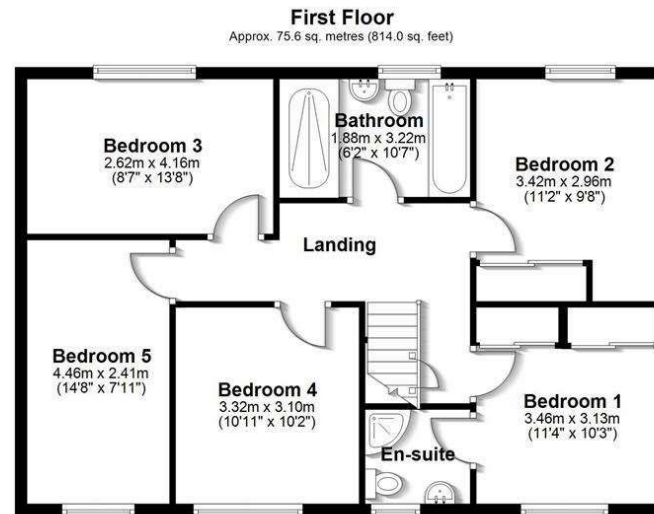
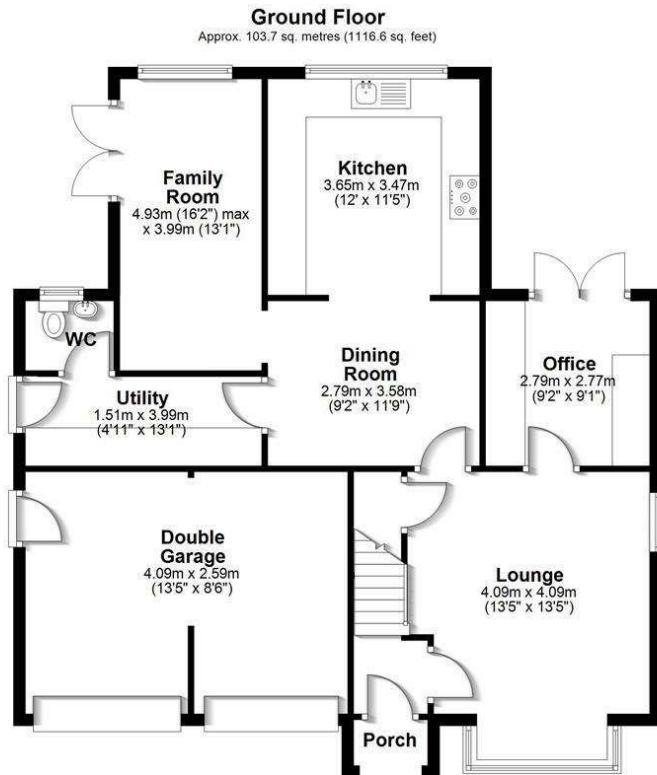
(ii) Floorplans shown are for general guidance only. Whilst every attempt has been made to ensure that the floorplan measurements are as accurate as possible, they are for illustrative purposes only.







Floorplan



Total area: approx. 179.4 sq. metres (1930.5 sq. feet)



EPC Rating - C

Tenure - Freehold

Council Tax Band - E

Local Authority
Wychavon District Council

We routinely refer clients to both our recommended Legal Firm and a panel of Financial Services Providers. It is your decision whether you choose to deal with these companies. In making that decision, you should know that we receive a referral fee