



Egremont Close, Evesham, WR11 3JL

**SHELDON
BOSLEY
KNIGHT**

LAND AND
PROPERTY
PROFESSIONALS

Property Description

A modern three bedroom semi-detached home offering comfortable and stylish living, situated on a corner plot within the desirable Orchards development.

The property features an entrance hall, WC, a bright kitchen with upgraded appliances/breakfast room, and a welcoming living room. Upstairs, there's a primary bedroom with an en-suite shower room, two additional bedrooms, and a family bathroom.

Outside, the home includes a low-maintenance rear garden, with one parking space at the rear and another at the front.

The property also benefits from UPVC double glazing throughout, mains gas central heating, and a remaining NHBC warranty.

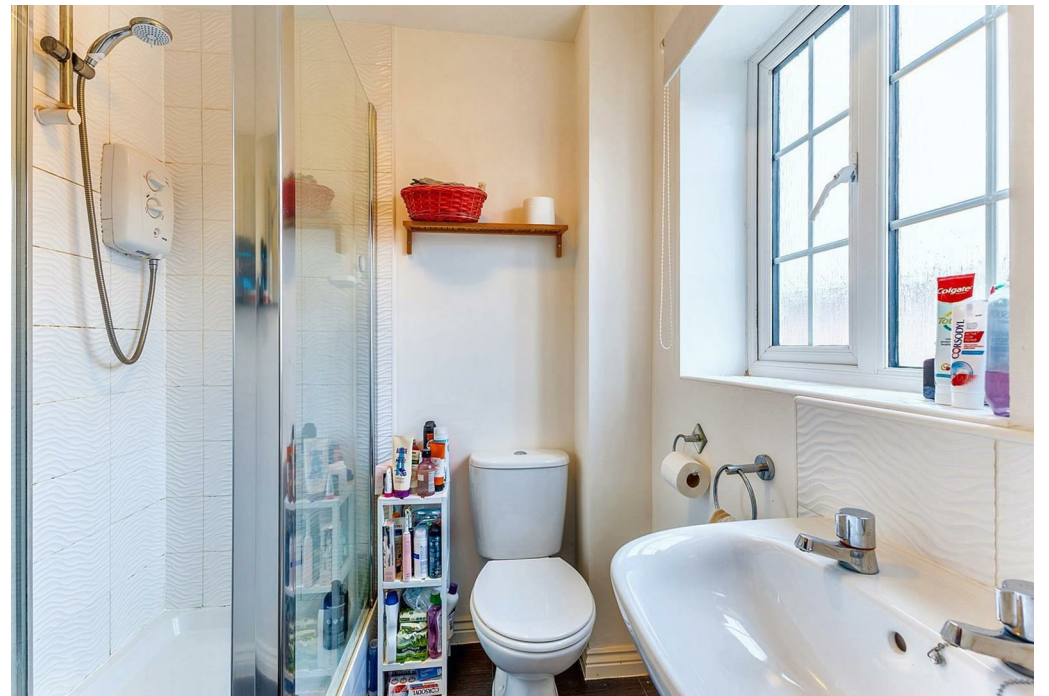




Key Features

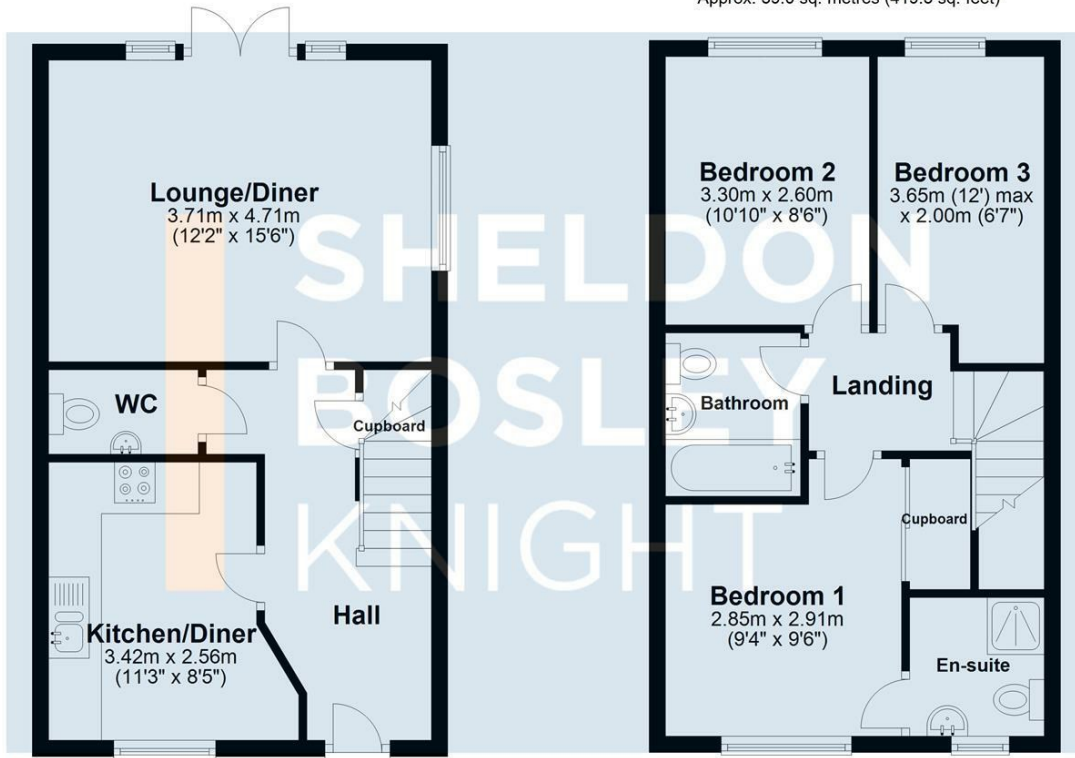
- THREE BEDROOMS
- SEMI-DETACHED HOME
- LIVING ROOM
- KITCHEN / BREAKFAST ROOM
- FAMILY BATHROOM
- WC
- REAR GARDEN
- PARKING AT FRONT & REAR
- EPC = B

Guide Price
£280,000



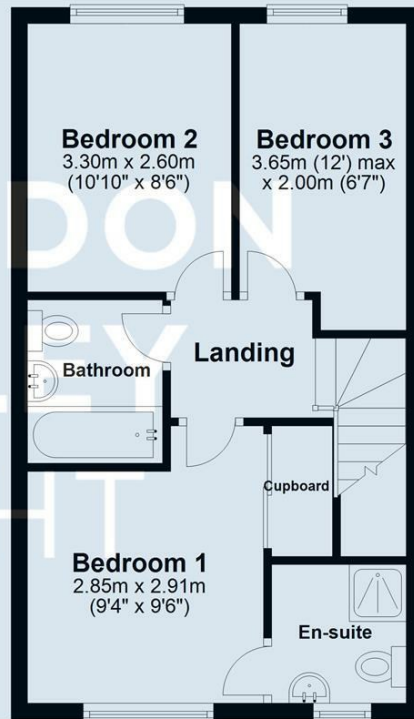
Ground Floor

Approx. 39.4 sq. metres (424.4 sq. feet)



First Floor

Approx. 39.0 sq. metres (419.3 sq. feet)



Total area: approx. 78.4 sq. metres (843.7 sq. feet)

All efforts have been made to ensure that the measurements on this floorplan are accurate however these are for guidance purposes only.
Plan produced using PlanUp.



EPC Rating - B

Tenure - Freehold

Council Tax Band - C

Local Authority
Wychavon District Council



We routinely refer clients to both our recommended legal firm and a panel of financial services providers. It is your decision whether you choose to deal with these companies. In making that decision, you should know that we receive a referral fee.

**SHELDON
BOSLEY
KNIGHT**

LAND AND
PROPERTY
PROFESSIONALS