



Mill Street, Evesham, WR11 4HU

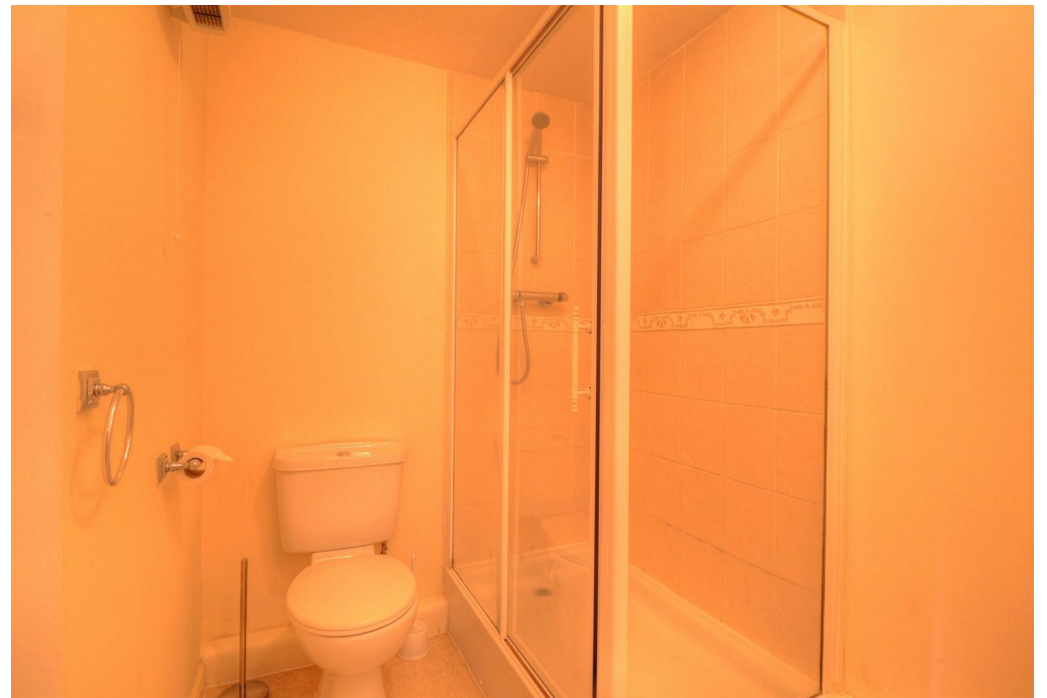
**SHELDON
BOSLEY
KNIGHT**

LAND AND
PROPERTY
PROFESSIONALS

Property Description

*** AVAILABLE SEPTEMBER *** A two bedroom second floor apartment close to the town centre with a garage. The historic market town of Evesham sits on the banks of the river Avon and provides for schools of all ages, leisure and shopping amenities along with the art deco Regal Cinema. The Vale of Evesham is ideally placed for anyone looking to commute, as the area enjoys excellent road links and a mainline train station to London Paddington and the larger centres of Worcester, Cheltenham and Stratford upon Avon all within 15 miles. The property comprises; Communal Entrance Hall with Staircase rising to Second Floor Landing, Flat door opens to Reception Hall, Lounge Diner with electric coal effect fire with decorative surround, Patio Door to Balcony and view to river, modern fitted Kitchen with appliances, Master Bedroom with En suite Shower Room, Double Bedroom Two with double fronted wardrobe and a Family Bathroom. The property further benefits from beautiful walks along the river and a single garage. This property is offered UNFURNISHED. Council Tax Band C. Energy Rating C. Initial 12 Month Tenancy.





Key Features

- AVAILABLE SEPTEMBER
- Evesham
- 2 Bedrooms
- Second Floor Flat
- Unfurnished
- Garage
- Town Centre Location
- Council Tax Band C
- Energy Rating C
- Initial 12 Month Tenancy

PCM
£775 PCM

EPC Rating - C

Tenure -

Council Tax Band - C

Local Authority -
Wychavon District Council

We routinely refer clients to both our recommended Legal Firm and a panel of Financial Services Providers. It is your decision whether you choose to deal with these companies. In making that decision, you should know that we receive a referral fee