



Feckenham Road, Redditch, B96 6DS

**SHELDON  
BOSLEY  
KNIGHT**

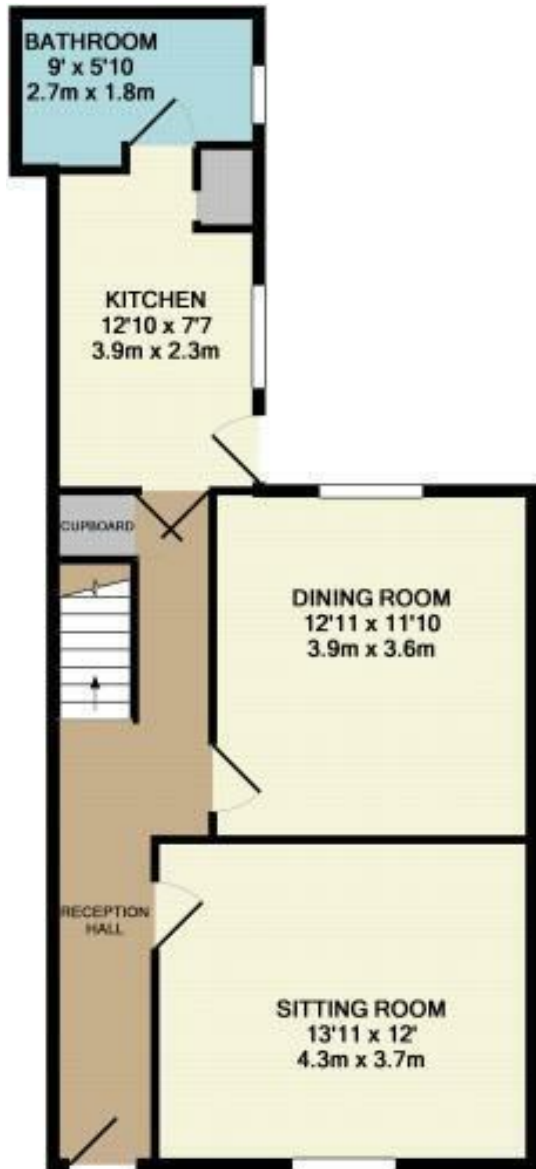
LAND AND  
PROPERTY  
PROFESSIONALS

# Property Description

\*\*\*AVAILABLE END OF JULY\*\*\* A traditional three bedroom mid terrace home, recently decorated & new carpets due to be fitted. Located in the sought after village of Astwood Bank & close to local amenities. The property comprises; entrance hall, two reception rooms, fitted kitchen leading to an enclosed court yard garden and a down stairs family bathroom. Upstairs; three double bedrooms. The property further benefits a parking space to the rear. This property is offered UNFURNISHED. Council Tax Band B. Energy Rating C. Initial 6 Month Tenancy.







GROUND FLOOR  
APPROX. FLOOR  
AREA 585 SQ.FT.  
(54.4 SQ.M.)



1ST FLOOR  
APPROX. FLOOR  
AREA 512 SQ.FT.  
(47.6 SQ.M.)

TOTAL APPROX. FLOOR AREA 1097 SQ.FT. (101.9 SQ.M.)

Whilst every attempt has been made to ensure the accuracy of the floor plan contained here, measurements of doors, windows, rooms and any other items are approximate and no responsibility is taken for any error. The services, systems and appliances shown have not been tested and no guarantee is given for their condition. The services, systems and appliances shown have not been tested and no guarantee is given for their condition. Made with Metropix ©2013

## Key Features

- Available End of July
- New Decoration Throughout
- New Carpets to Be Fitted
- Terraced House
- Three Double Bedrooms
- Parking Space
- Close to Local Amenities
- EPC Rating C
- Council Tax Band B
- Initial 6 Month Tenancy

**PCM**  
**£1,100 PCM**

EPC Rating - C

Tenure -

Council Tax Band - B

Local Authority -

We routinely refer clients to both our recommended Legal Firm and a panel of Financial Services Providers. It is your decision whether you choose to deal with these companies. In making that decision, you should know that we receive a referral fee