



Mortimers Quay, Evesham, WR11 3AS

# Property Description

\*\*\*WELL PRESENTED TOP FLOOR APARTMENT WITH RIVER VIEWS - CLOSE TO LOCAL AMENITIES\*\*\*

A well presented two bedroom apartment with beautiful views of the River Avon. Situated in the heart of Evesham, this property is close to local shops and restaurants with good railway links with the train station a short walk away.

The accommodation briefly comprises; communal door into hallway with stairs to the top floor, hallway with two storage cupboards, living room with patio doors opening onto the Juliette balcony with views over the River Avon, kitchen, main bedroom including a fitted double wardrobe, second bedroom and a bathroom with a shower-over-bath. The property has been improved by the current owner with tasteful decor and upgraded electric heating.

Externally, the property benefits from allocated parking (permit required) and use of the peaceful communal grounds.





## Key Features

- TWO BEDROOMS
- SECOND FLOOR APARTMENT
- RIVER VIEWS
- UPGRADED ELECTRIC HEATING
- CLOSE TO LOCAL AMENITIES
- EPC RATING - C

**Asking Price**  
**£137,500**

EPC Rating - C

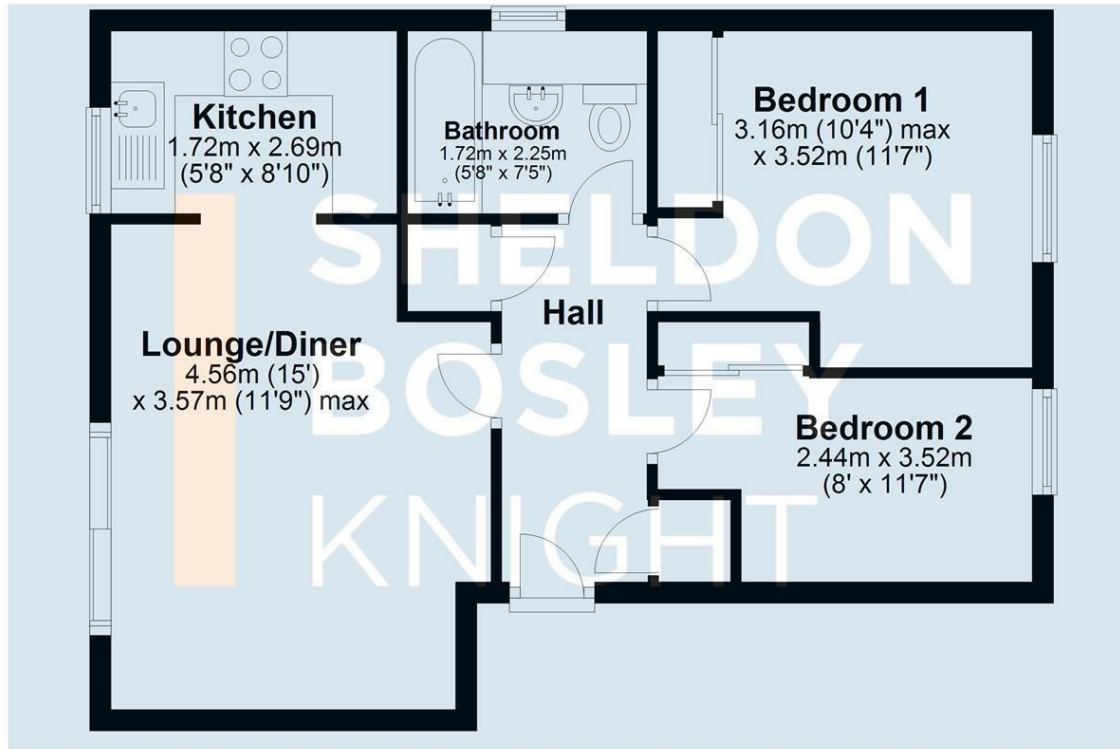
Tenure - Leasehold

Council Tax Band - B

Local Authority -  
Wychavon

### Ground Floor

Approx. 48.7 sq. metres (524.3 sq. feet)



Total area: approx. 48.7 sq. metres (524.3 sq. feet)

All efforts have been made to ensure that the measurements on this floorplan are accurate however these are for guidance purposes only.  
Plan produced using PlanUp.

We routinely refer clients to both our recommended Legal Firm and a panel of Financial Services Providers. It is your decision whether you choose to deal with these companies. In making that decision, you should know that we receive a referral fee