



Coronation Close, Chipping Campden, GL55 6BQ

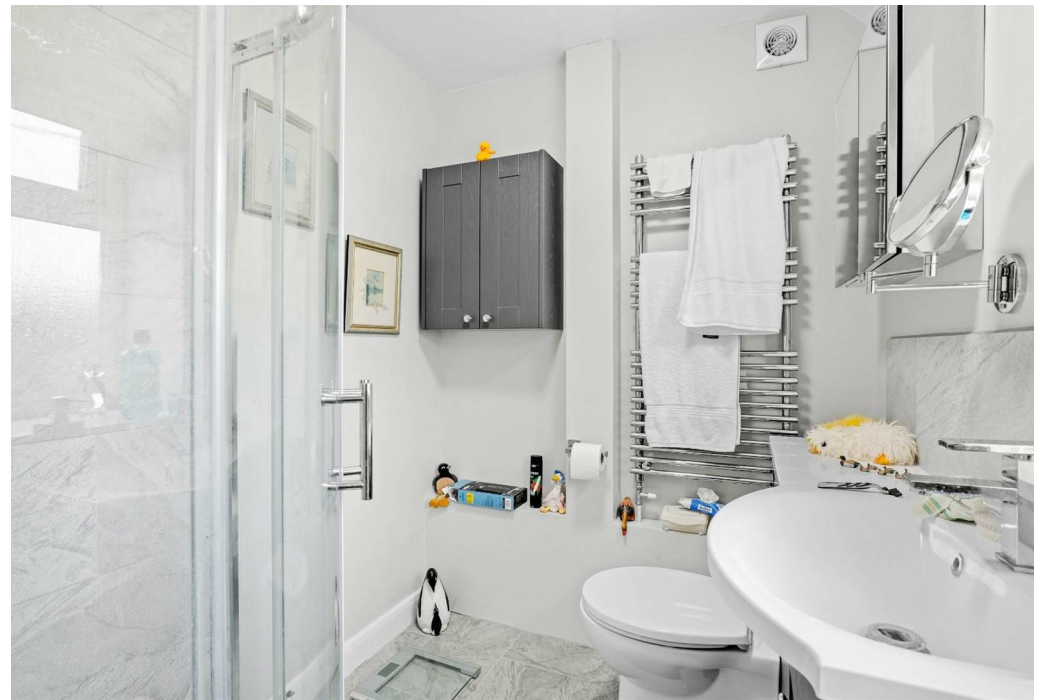
**SHELDON
BOSLEY
KNIGHT**

LAND AND
PROPERTY
PROFESSIONALS

Property Description

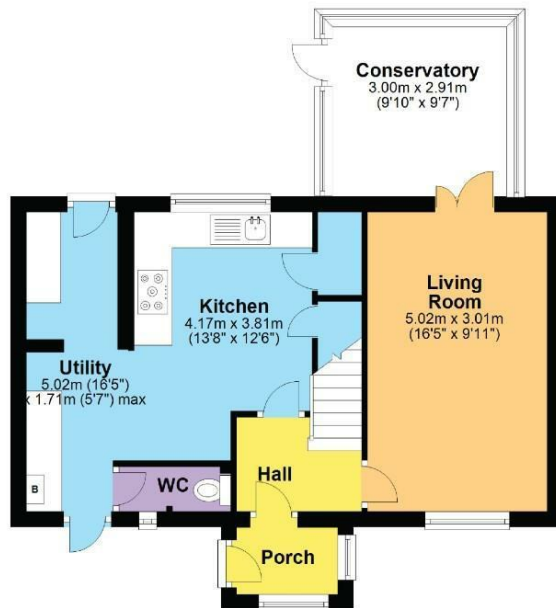
Coronation Close is an excellent 3 bedroom Cotswold stone house built in the early 1950's with lovely accommodation, gas central heating and excellent car parking. Situated on the western edge of the town in the area known as Littleworth, 8 Coronation Close is ideal for walking into the town centre. It has a modern kitchen/utility, sitting room, conservatory, first floor bedrooms 1 & 2 with shower room and second floor bedroom/study. The rear garden is a lovely feature of this property being recently landscaped with large paved areas, barbecue, garden shed and newly fenced boundaries offering privacy and perfect for a young family wanting to live in the town. The property has full double glazing and gas central heating. Coronation Close is covered by section 157 of the Housing Acts.



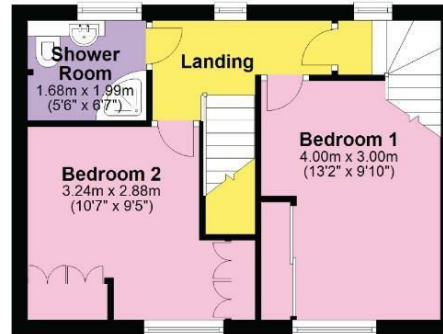




Ground Floor
Approx. 54.4 sq. metres (585.8 sq. feet)



First Floor
Approx. 34.7 sq. metres (373.7 sq. feet)



Second Floor
Approx. 19.8 sq. metres (213.6 sq. feet)



Total area: approx. 109.0 sq. metres (1173.1 sq. feet)

DISCLAIMER - Floor plans shown are for general guidance only. Whilst every attempt has been made to ensure that the floorplan measurements are as accurate as possible, they are for illustrative purposes only.

Key Features

- Excellent 3 Bedroom Home
- Close to Town Centre
- Breakfast Kitchen/Utility
- Sitting Room
- Cloakroom WC
- Shower Room
- Top Floor Office/Bedroom 3
- Conservatory
- Landscaped Rear Garden
- Section 157 Occupation Restriction

Guide Price
£385,000

EPC Rating - D

Tenure - Freehold

Council Tax Band - C

Local Authority -
Cotswold District Council