



Jenkinson realestates

Summer Meadow |
Deal
Asking Price £490,000

Freehold

Energy Performance Rating = TBC

New Detached Home
Luxury Family Bathroom

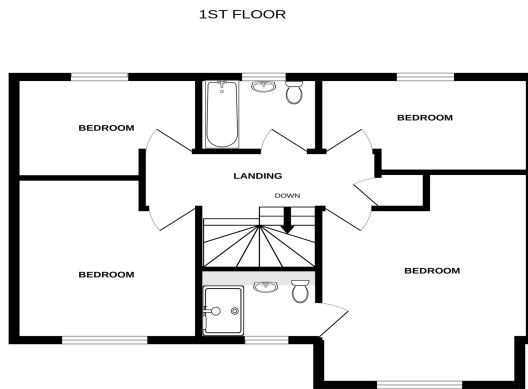
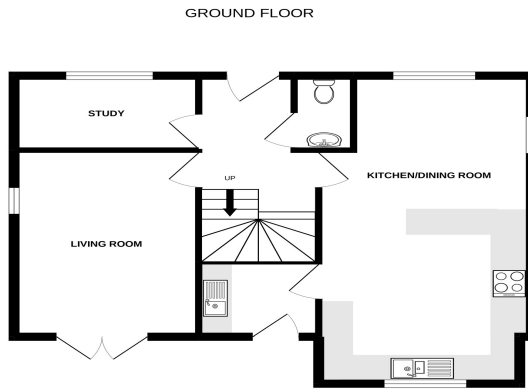
Four Bedrooms
Fitted Kitchen

En-Suite To Master
Open Plan Kitchen / Dining Room

*** Coming Soon - Anticipated Completion for September 2022 *** - Jenkinson Estates are excited to announce the highly anticipated launch of Summer Meadow, Sholden, Deal. The select development of just fourteen houses provides an enclave of detached and semi detached homes. The stylish properties are being constructed by Austin Smith Homes. The development will offer a pair of semi detached homes, both offering two bedrooms. There is an additional pair of semi detached homes that offer three bedrooms. There is a detached home, offering two bedrooms and are also six detached homes, offering three bedrooms. The site is completed with three detached homes, offering four bedrooms, with these also have the benefit of an additional reception room and utility room. All of the properties will have the benefit of en-suites shower rooms to the master bedrooms and downstairs W.C.'s. These properties also offer spacious living accommodation in the form of a kitchen / dining rooms.







Whilst every attempt has been made to ensure the accuracy of the floorplan contained here, measurements of doors, windows, rooms and any other items are approximate and no responsibility is taken for any error, omission or mis-statement. This plan is for illustrative purposes only and should be used as such by any prospective purchaser. The services, systems and appliances shown have not been tested and no guarantee as to their operability or efficiency can be given.
Made with Metropix ©2022



Accommodation to be confirmed.

Jenkinson Estates
 4 West Street, Deal, Kent, CT14 6AE
 01304 373 984
 info@jenkinsonestates.co.uk
 www.jenkinsonestates.co.uk

Important Notice - These particulars have been prepared in good faith and they are not intended to constitute part of an offer or contract. We have not performed a structural survey on this property and the services, appliances and specific fittings have not been tested. All photographs, measurements, floor plans and distances referred to are given as a guide and should not be relied upon.

