



Jenkinson realestates

Caesar Court | Mongeham Road

Deal

Asking Price £165,000

Leasehold

Energy Performance Rating = B

Spacious Retirement Apartment

Offering Two Double Bedrooms

75% Share Ownership

No Onward Chain

Private Balcony with Stunning Views

Lift Facility Available

Jenkinson Estates are pleased to bring to the market this beautifully presented second floor apartment in the popular Caesar Court, which offers independent living lifestyle, exclusively for the over 55's and is offered with a 75% share. Located on the outskirts of Deal town centre, Caesar Court is perfectly positioned to enjoy all the facilities that this sought-after seaside town has to offer. These spacious apartments offer a range of facilities to include a restaurant, coffee shop, hairdressers, communal living lounge areas, buggy/cycle store and guest suite. There is secure door entry system and a 24-hour emergency call system for peace of mind. The property comprises a spacious hallway with ample storage space and doors leading through to a wet room, two double bedrooms and a good size open plan living / dining / kitchen space, with a door leading out to a private balcony. There are communal gardens and residents parking. This property comes to the market with No Onward Chain complications. All viewings are strictly through the appointed Agents Jenkinson Estates.



Council Tax Band B

Vendor advises (10/24);

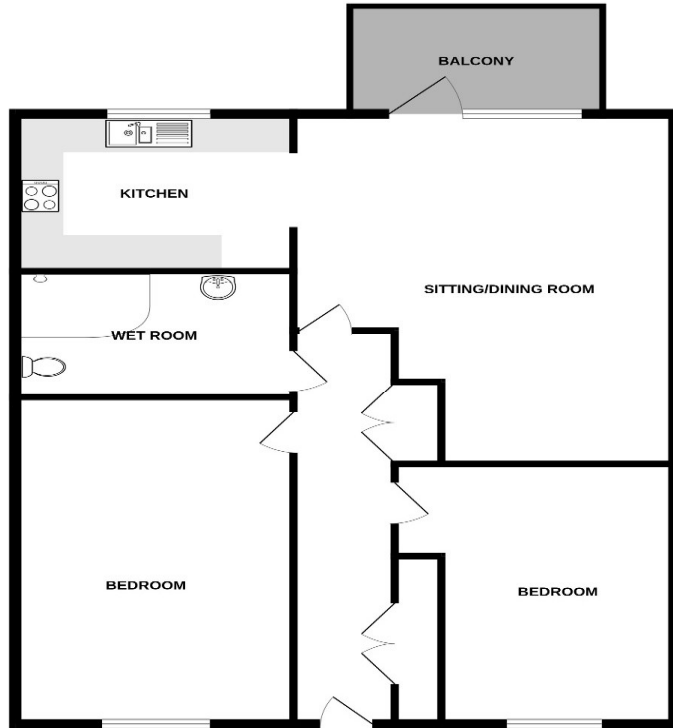
Length of Lease - 114 Years Remaining

£475.83pcm - Outgoings

£19.30pcm - Well Being Charge



SECOND FLOOR



Whilst every attempt has been made to ensure the accuracy of the floorplan contained here, measurements of doors, windows, rooms and any other items are approximate and no responsibility is taken for any error, omission or mis-statement. This plan is for illustrative purposes only and should be used as such by any prospective purchaser. The services, systems and appliances shown have not been tested and no guarantee as to their operability or efficiency can be given. Made with Metrepx v2024.

Jenkinson Estates
4 West Street, Deal, Kent, CT14 6AE

01304 373 984
info@jenkinsonestates.co.uk
www.jenkinsonestates.co.uk

Important Notice - These particulars have been prepared in good faith and they are not intended to constitute part of an offer or contract. We have not performed a structural survey on this property and the services, appliances and specific fittings have not been tested. All photographs, measurements, floor plans and distances referred to are given as a guide and should not be relied upon.



Accommodation

Entrance Via;

Living / Dining Room
19'0" x 14'2" (5.79m x 4.32m)

Kitchen
9'8" x 9'2" (2.95m x 2.79m)

Private Balcony

Bedroom One
15'1" x 9'10" (4.60m x 3.00m)

Bedroom Two
11'6" x 9'6" (3.51m x 2.90m)

Wet Room
8'3" x 6'2" (2.51m x 1.88m)

Residents Parking

Communal Gardens

