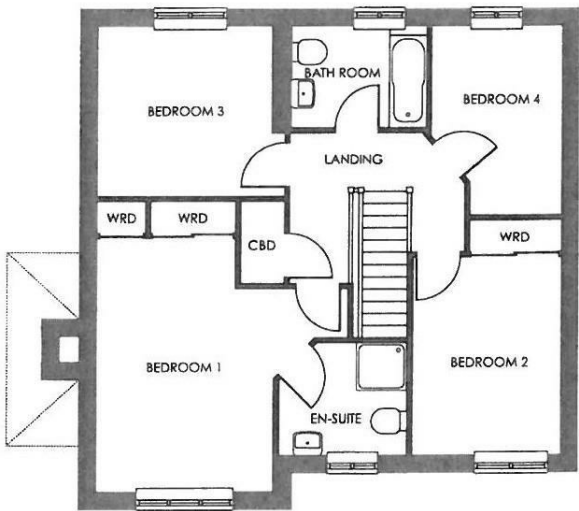
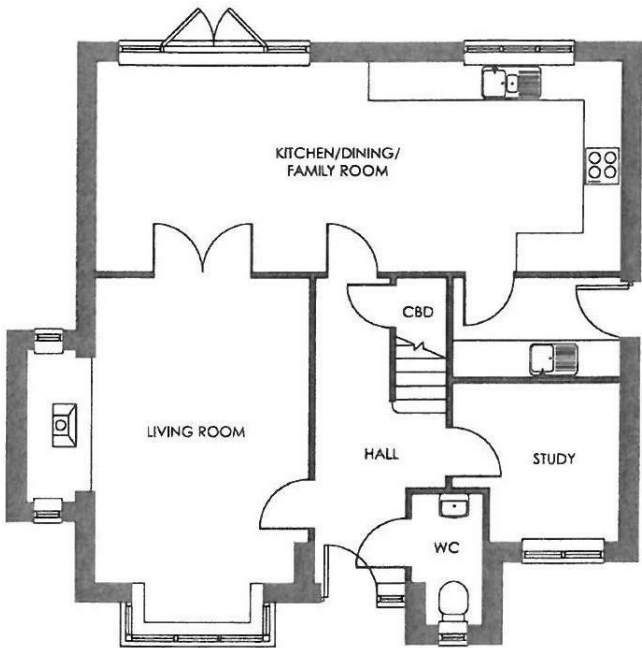


FOR SALE

Plot 18 The Rydal, Foundry Point, Whitchurch, Shropshire, SY13 1PB



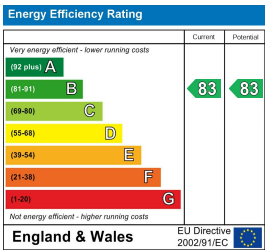
FOR SALE

Fixed Asking Price £469,950

Plot 18 The Rydal, Foundry Point, Whitchurch, Shropshire, SY13 1PB

**Property to sell?** We would be delighted to provide you with a free no obligation market assessment of your existing property. Please contact your local Halls office to make an appointment. **Mortgage/financial advice.** We are able to recommend a completely independent financial advisor, who is authorised and regulated by the FCA. Details can be provided upon request. **Do you require a surveyor?** We are able to recommend a completely independent chartered surveyor. Details can be provided upon request.

Energy Performance Rating



A great opportunity to acquire a BRAND NEW property built by Shropshire Homes. The property comprises entrance hall, cloaks with W.C, living room, modern kitchen with integrated appliances, 3 bedrooms and bathroom. It has parking, gardens, central heating and has an EPC of B and the property measures 1,555 ft2.



01948 663 230

**Whitchurch Sales**  
8 Watergate Street, Whitchurch, Shropshire, SY13 1DW  
E: whitchurch@hallsgb.com



IMPORTANT NOTICE. Halls Holdings Ltd and any joint agents for themselves, and for the Vendor of the property whose Agents they are, give notice that: (i) These particulars are produced in good faith, are set out as a general guide only and do not constitute any part of a contract (ii) No person in the employment of or any agent of or consultant to Halls Holdings has any authority to make or give any representation or warranty whatsoever in relation to this property (iii) Measurements, areas and distances are approximate. Floor plans and photographs are for guidance purposes only (photographs are taken with a wide angled / zoom lenses) and dimensions shapes and precise locations may differ (iv) It must not be assumed that the property has all the required planning or building regulation consents. Halls Holdings, Bowmen Way, Shrewsbury, Shropshire SY4 3DR. Registered in England 06597073.



FOR SALE

Whitchurch Town Centre 1/2 mile, Railway station 250 metres, Nantwich 12 miles, Shrewsbury 20 miles, Chester 20 miles.



2 Reception Room/s



4 Bedroom/s



2 Bath/Shower Room/s



- Brand New Detached House
- 10 Year NHBC Warranty
- Finished to a High Specification
- Allocated Parking/Driveway/Garage
- Front & Rear Gardens
- Hall, Living Room, Study, Kitchen/ Dining/ Family Room
- 4 Bedrooms, Family Bathroom
- Master Bedroom with En-Suite
- Available Summer 2024

**Foundry Point**  
Foundry Point a beautiful development featuring eleven house types consisting of two & three bedroom terraced and semi-detached homes, and three & four bedroom detached properties from Shropshire Homes' Legacy and Classic Collections. The homes are designed with modern individuals, couples and families at the forefront of our designer's mind.

**The Developer**  
Shropshire Homes is an award-winning housebuilder, developing homes of quality and character for over forty-three years.

**Location**  
Sat on the edge of Whitchurch, Shropshire's most historic market town, Foundry Point benefits from being well-connected to both Shropshire and Cheshire, as well as being a short walk away from the town centre where you will find an array of independent shops, eateries, and amenities.

Foundry Point is perfectly situated on the edge of the Market Town of Whitchurch in Shropshire, the UK's county named in 'ABTA'S Top 10 Destinations to Watch 2024'. Bordering South Cheshire and Wales, with countryside on your doorstep and the bustle of town-life just a short walk away, Foundry Point offers the best of both worlds. Whitchurch benefits from the feel of a small town, whilst providing everything you could possibly need, including the traditional market held every Friday, local butchers, bakeries, pharmacies, a Family Medical Practice, multiple dentists, an optician, hair dressers, a library, a hospital, as well as some of the major supermarkets.

**The Rydal**  
The Rydal is an exquisite four-bedroom detached home from our Classic Collection. Upon entering, a welcoming hallway leads to the living room, where a traditional feature log-burner is nestled in an inglenook, creating a cosy feel, and double doors lead into the open-plan kitchen/dining room, providing free-flowing access. The kitchen/dining room includes French doors that open up to the private garden and there is space for a kitchen island, should you wish to upgrade. Adjacent to the kitchen, a utility offers additional functionality and storage space. Returning to the hallway, a study and a downstairs WC complete the ground floor layout.

Moving upstairs, you'll find four well-appointed bedrooms. The principal suite, bedroom one, boasts built-in wardrobes and an en-suite. Bedroom two also comes with built-in wardrobes and makes a perfect guest bedroom. Bedroom three is well-suited for a teenager and bedroom four makes an ideal children's room. A large family bathroom caters to the needs of the entire household.

The Rydal also includes an external garage and a spacious driveway, ensuring secure parking and accommodating multiple vehicles.

Plot 19 also includes an Air Source Heat Pump, creating a greener home and better energy efficiency.

Please note: the pictures shown are not specific to plots on Foundry Point, and different fixtures are available.

- Key Features**
- NHBC 10-year Buildmark warranty
  - UPVC windows
  - EPC rating of B
  - Choice of kitchen units with quartz or laminate worktops
  - Oven, hob, integrated dishwasher and fridge freezer
  - Contemporary white bathrooms
  - Choice of wall and floor tiles
  - Sliding door wardrobes
  - Electric vehicle charging point
  - Turf laid to front garden
  - Fibre ready (FTTP)

**Accommodation Comprises**  
Front entrance door leads into the hallway.

**Entrance Hall**

**Cloakroom**

**Living Room**  
16'7" x 11'4" (5.05m" x 3.45m")

**Kitchen/ Dining/ Family Room**  
27'11" x 11'1" (8.51m" x 3.38m")

**Study**  
8'10" x 8'3" (2.69m" x 2.51m")

**1st Floor Landing**

**Bedroom One**  
17'5" x 10'7" (5.31m" x 3.23m")

**En-Suite**

**Bedroom Two**  
11'10" x 9'1" (3.61m" x 2.77m")

**Bedroom Three**  
10'6" x 10'3" (3.20m" x 3.12m")

**Bedroom Four**  
11'5" x 7'10" (3.48m" x 2.39m")

**Bathroom**

**Viewing Arrangements**  
Strictly through the Agents: Halls, 8 Watergate Street, Whitchurch, SY13 1DW Telephone 01948 663230  
You can also find Halls properties at [rightmove.co.uk](https://www.rightmove.co.uk) & [Onthemarket.com](https://www.onthemarket.com) WH1481 020524 (Draft Details)

**Directions**  
What 3 Words: hillsides.doormat.view

**Council Tax - Shropshire**  
For clarification of these figures please contact Shropshire Council on 0345 6789002.

**Services - All**  
We believe that mains water, gas, electricity and drainage are available to the property. The heating is via a gas fired boiler to radiators.