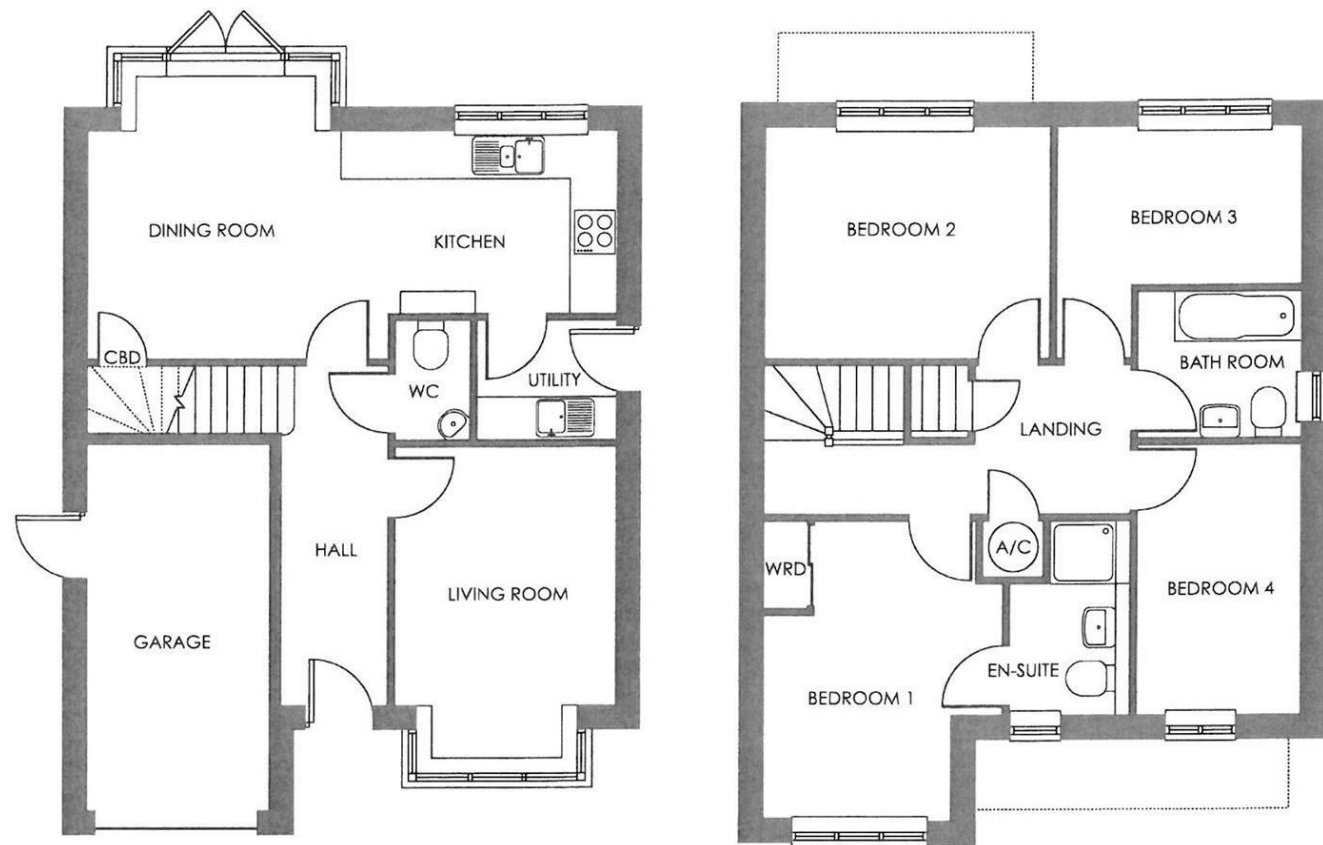
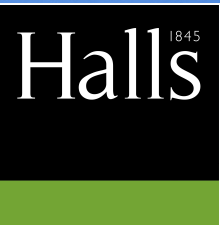


FOR SALE

Plot 21, The Carisbrooke Foundry Point, Whitchurch, Shropshire, SY13 1PB



FOR SALE

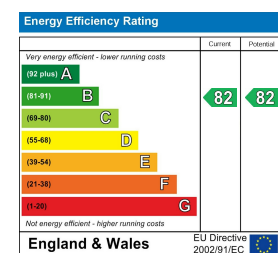
Fixed Asking Price £352,500

Plot 21, The Carisbrooke Foundry Point, Whitchurch, Shropshire, SY13 1PB

Property to sell? We would be delighted to provide you with a free no obligation market assessment of your existing property. Please contact your local Halls office to make an appointment. **Mortgage/ financial advice.** We are able to recommend a completely independent financial advisor,

who is authorised and regulated by the FCA. Details can be provided upon request. **Do you require a surveyor?** We are able to recommend a completely independent chartered surveyor. Details can be provided upon request.

Energy Performance Rating



A great opportunity to acquire a BRAND NEW property built by Shropshire Homes. The property comprises entrance hall, cloaks with W.C, living room, modern kitchen / diner, integrated appliances, 3 bedrooms and bathroom. It has parking, garage, gardens, central heating and has an EPC of B. The property measures 1,211 ft2.



01948 663 230

Whitchurch Sales
8 Watergate Street, Whitchurch, Shropshire, SY13 1DW
E: whitchurch@hallsgb.com



IMPORTANT NOTICE. Halls Holdings Ltd and any joint agents for themselves, and for the Vendor of the property whose Agents they are, give notice that: (i) These particulars are produced in good faith, are set out as a general guide only and do not constitute any part of a contract (ii) No person in the employment of or any agent of or consultant to Halls Holdings has any authority to make or give any representation or warranty whatsoever in relation to this property (iii) Measurements, areas and distances are approximate. Floor plans and photographs are for guidance purposes only (photographs are taken with a wide angled / zoom lenses) and dimensions shapes and precise locations may differ (iv) It must not be assumed that the property has all the required planning or building regulation consents. Halls Holdings, Bowmen Way, Shrewsbury, Shropshire SY4 3DR. Registered in England 06597073.

Whitchurch Town Centre 1/2 mile, Railway station 250 metres, Nantwich 12 miles, Shrewsbury 20 miles, Chester 20 miles.



2 Reception Room/s



4 Bedroom/s



2 Bath/Shower Room/s



- Brand New Detached Home
- 10 Year NHBC Warranty
- Finished to a High Specification
- Garage, Driveway
- Front & Rear Gardens
- Hall, Living Room, Kitchen / Dining Room
- 4 Bedrooms, Family Bathroom
- Master Bedroom with En-Suite
- Available Summer 2024

Foundry Point

Foundry Point a beautiful development featuring eleven house types consisting of two & three bedroom terraced and semi-detached homes, and three & four bedroom detached properties from Shropshire Homes' Legacy and Classic Collections. The homes are designed with modern individuals, couples and families at the forefront of our designer's mind.

The Developer

Shropshire Homes is an award-winning housebuilder, developing homes of quality and character for over forty-three years.

Location

Sat on the edge of Whitchurch, Shropshire's most historic market town, Foundry Point benefits from being well-connected to both Shropshire and Cheshire, as well as being a short walk away from the town centre where you will find an array of independent shops, eateries, and amenities.

Foundry Point is perfectly situated on the edge of the Market Town of Whitchurch in Shropshire, the UK's county named in 'ABTA'S Top 10 Destinations to Watch 2024'. Bordering South Cheshire and Wales, with countryside on your doorstep and the bustle of town-life just a short walk away, Foundry Point offers the best of both worlds. Whitchurch benefits from the feel of a small town, whilst providing everything you could possibly need, including the traditional market held every Friday, local butchers, bakeries, pharmacies, a Family Medical Practice, multiple dentists, an optician, hair dressers, a library, a hospital, as well as some of the major supermarkets.

The Carisbrook

The Carisbrooke is an exceptional four-bedroom abode from our Classic Collection. Upon entering, you are welcomed by a long hallway that leads to a spacious living room, adorned with a captivating bay window. Moving along the hallway, you'll discover the heart of the home - an open-plan kitchen/dining room.

The dining area features a bay window with French doors, which not only flood the space with light but also provide easy access to the private garden, allowing for seamless indoor-outdoor living.

Ascending to the second floor, you'll find four well-appointed bedrooms and a family bathroom. The principal suite, bedroom one, boasts an en-suite bathroom and built-in wardrobes. Bedroom two offers a spacious layout, whilst bedrooms three and four present versatile options to suit your needs, serving as children's bedrooms or home offices.

An integral single garage offers secure parking and additional storage, while a generously sized driveway provides ample space for multiple vehicles.

Please note: the pictures shown are not specific to plots on Foundry Point, and different fixtures are available.

Key Features

Key Features:

- NHBC 10-year Buildmark warranty
- UPVC windows
- EPC rating of B
- Choice of kitchen units with quartz or laminate worktops
- Oven, hob, integrated dishwasher and fridge freezer
- Contemporary white bathrooms
- Choice of wall and floor tiles
- Sliding door wardrobes
- Electric vehicle charging point
- Turf laid to front garden
- Fibre ready (FTTP)

Accommodation Comprises

Front entrance door opens into the hallway.

Entrance Hall

Cloakroom

Living Room

11'10" x 9'11" (3.61m" x 3.02m")

Kitchen / Dining Room

23'11" x 10'4" (7.29m" x 3.15m")

Utility

Garage

1st Floor Landing

Bedroom One

13'5" x 10'8" (4.09m" x 3.25m")

En-Suite

Bedroom Two

12'8" x 10'3" (3.86m" x 3.12m")

Bedroom Three

11' x 7'1" (3.35m x 2.16m")

Bedroom Four

12' x 7'4" (3.66m x 2.24m")

Bathroom

Viewing Arrangements

Strictly through the Agents: Halls, 8 Watergate Street, Whitchurch, SY13 1DW Telephone 01948 663230
You can also find Halls properties at [rightmove.co.uk](https://www.rightmove.co.uk) & [Onthemarket.com](https://www.onthemarket.com)
WH1501 290524(Draft Details)

Directions

What 3 Words: hillsides.doormat.view

Council Tax - Shropshire

For clarification of these figures please contact Shropshire Council on 0345 6789002.

Services - All

We believe that mains water, gas, electricity and drainage are available to the property. The heating is via a gas fired boiler to radiators.