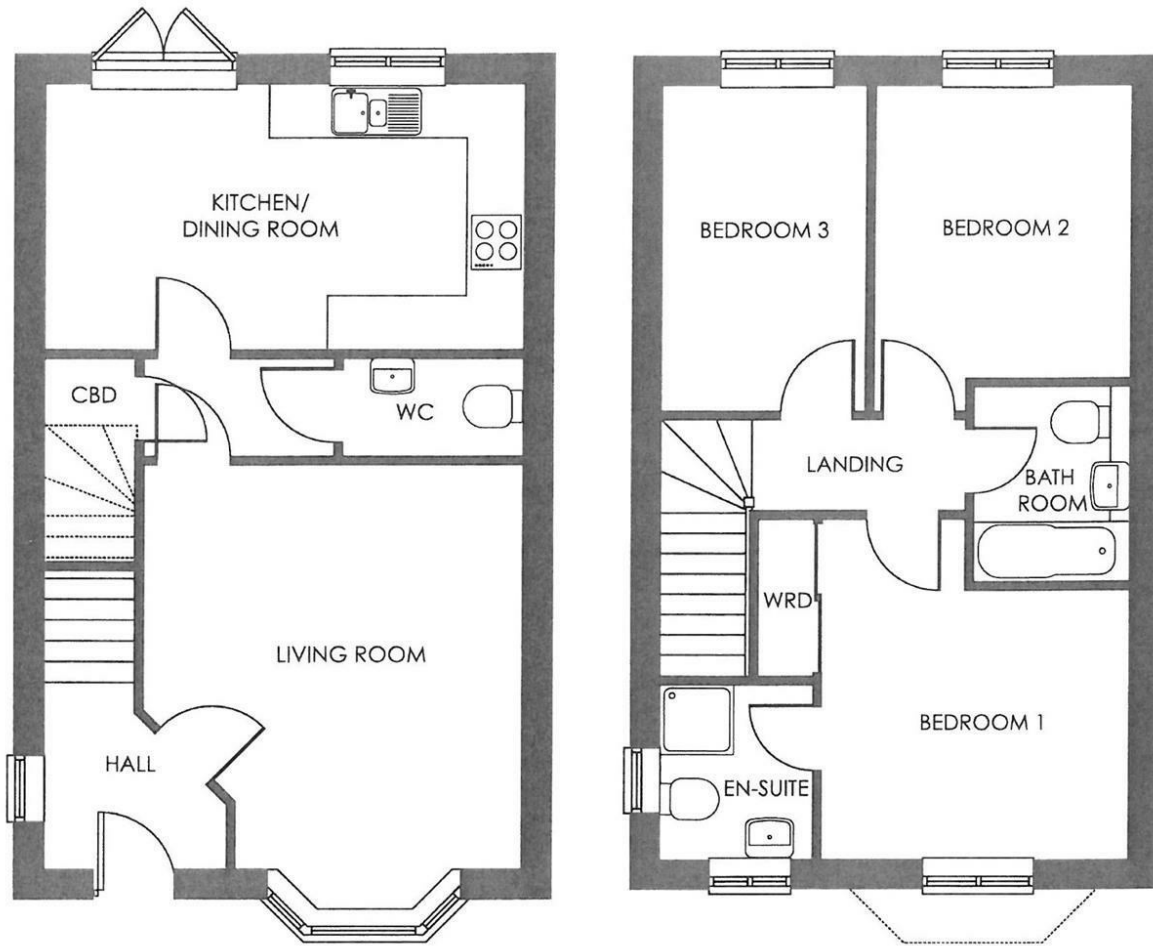


FOR SALE

Plot 37, The Wheaton Foundry Point, Whitchurch, Shropshire, SY13 1PB



FOR SALE

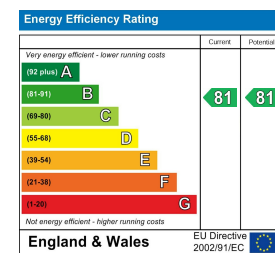
Offers In The Region Of £287,500

Plot 37, The Wheaton Foundry Point, Whitchurch, Shropshire, SY13 1PB

Property to sell? We would be delighted to provide you with a free no obligation market assessment of your existing property. Please contact your local Halls office to make an appointment. Mortgage/ financial advice. We are able to recommend a completely independent financial advisor,

who is authorised and regulated by the FCA. Details can be provided upon request. Do you require a surveyor? We are able to recommend a completely independent chartered surveyor. Details can be provided upon request.

Energy Performance Rating



A great opportunity to acquire a BRAND NEW property built by Shropshire Homes. The property comprises entrance hall, cloaks with W.C, living room, modern kitchen with integrated appliances, 3 bedrooms and bathroom. It has parking, gardens, central heating and has an EPC of B. The property measures 949 ft2.



01948 663 230

Whitchurch Sales
8 Watergate Street, Whitchurch, Shropshire, SY13 1DW
E: whitchurch@hallsgb.com



IMPORTANT NOTICE. Halls Holdings Ltd and any joint agents for themselves, and for the Vendor of the property whose Agents they are, give notice that: (i) These particulars are produced in good faith, are set out as a general guide only and do not constitute any part of a contract (ii) No person in the employment of or any agent of or consultant to Halls Holdings has any authority to make or give any representation or warranty whatsoever in relation to this property (iii) Measurements, areas and distances are approximate. Floor plans and photographs are for guidance purposes only (photographs are taken with a wide angled / zoom lenses) and dimensions shapes and precise locations may differ (iv) It must not be assumed that the property has all the required planning or building regulation consents. Halls Holdings, Bowmen Way, Shrewsbury, Shropshire SY4 3DR. Registered in England 06597073.

Whitchurch Town Centre 1/2 mile, Railway station 250 metres, Nantwich 12 miles, Shrewsbury 20 miles, Chester 20 miles.



2 Reception Room/s



3 Bedroom/s



2 Bath/Shower Room/s



- Brand New Detached House
- 10 Year NHBC Warranty
- Finished to a High Specification
- Driveway for two cars
- Front & Rear Gardens
- Hall, Lounge, Dining Kitchen
- 3 Bedrooms, Family Bathroom
- Master Bedroom with En-Suite
- Available Summer 2024

Foundry Point

Foundry Point a beautiful development featuring eleven house types consisting of two & three bedroom terraced and semi-detached homes, and three & four bedroom detached properties from Shropshire Homes' Legacy and Classic Collections. The homes are designed with modern individuals, couples and families at the forefront of our designer's mind.

The Developer

Shropshire Homes is an award-winning housebuilder, developing homes of quality and character for over forty-three years.

Location

Sat on the edge of Whitchurch, Shropshire's most historic market town, Foundry Point benefits from being well-connected to both Shropshire and Cheshire, as well as being a short walk away from the town centre where you will find an array of independent shops, eateries, and amenities.

Foundry Point is perfectly situated on the edge of the Market Town of Whitchurch in Shropshire, the UK's county named in 'ABTA'S Top 10 Destinations to Watch 2024'. Bordering South Cheshire and Wales, with countryside on your doorstep and the bustle of town-life just a short walk away, Foundry Point offers the best of both worlds. Whitchurch benefits from the feel of a small town, whilst providing everything you could possibly need, including the traditional market held every Friday, local butchers, bakeries, pharmacies, a Family Medical Practice, multiple dentists, an optician, hair dressers, a library, a hospital, as well as some of the major supermarkets.

The Wheaton

The Wheaton is a well-appointed detached home. As you step through the front door, you are greeted by a welcoming hallway that leads on to a spacious living room, bathed in natural light streaming through the beautiful bay window. The living room leads to a central hallway with a WC, large cupboard and an open-plan kitchen/dining room off it. The dining area provides a perfect setting for meals with family and friends, enhanced by an abundance of natural light that pours in through the double doors leading out to the private garden.

Moving upstairs, bedroom one boasts generous proportions, featuring an en-suite and built-in wardrobe. While the bedrooms two and three offer flexibility for a study, dressing room or growing family. The large bathroom completes the first floor. The Wheaton home comes complete with a driveway for two cars.

Plot 37 also includes an Air Source Heat Pump, creating a greener home and better energy efficiency.

Please note: the pictures shown are not specific to plots on Foundry Point, and different fixtures are available.

Key Features

- NHBC 10-year Buildmark warranty
- UPVC windows
- EPC Rating of B
- Choice of kitchen units with laminate worktops or upgrades to quartz available
- Integrated oven and hob
- Contemporary white bathrooms
- Choice of wall and floor tiles, with upgrades available
- Sliding door wardrobes available
- Electric vehicle charging point
- Turf laid to front garden
- Fibre ready (FTTP)

Accommodation Comprises

Front entrance door opens into hallway.

Entrance Hall

Cloakroom

Living Room

14'6" x 13'6" (4.42m" x 4.11m")

Kitchen/ Dining Room

17' x 9'5" (5.18m x 2.87m")

1st Floor Landing

Bedroom One

12'4" x 11'1" (3.76m" x 3.38m")

En-Suite

Bedroom Two

11'8" x 9'2" (3.56m" x 2.79m")

Bedroom Three

11'8" x 7'5" (3.56m" x 2.26m")

Bathroom

Viewing Arrangements

Strictly through the Agents: Halls, 8 Watergate Street, Whitchurch, SY13 1DW Telephone 01948 663230
You can also find Halls properties at rightmove.co.uk & Onthemarket.com
WH1476 010524 (Draft Details)

Directions

What 3 Words: hillsides.doormat.view

Council Tax - Shropshire

For clarification of these figures please contact Shropshire Council on 0345 6789002.

Services - All

We believe that mains water, gas, electricity and drainage are available to the property. The heating is via a gas fired boiler to radiators.

Tenure - Freehold

We understand that the property is Freehold although purchasers must make their own enquiries via their solicitor.