

# FLETCHERS

## ESTATE AGENTS



### Westwick Gardens, W14

£1,500,000

A wonderful, split-level, maisonette situated within an imposing Victorian building offering over 1700sqft worth of living space, within an end of terrace house in the heart of Brook Green. The property has been excellently renovated to offer modern family living while retaining its character from the period. Entering on the raised ground floor you have spacious double reception room. This attractive, bay fronted, room benefits from high ceilings throughout and lots of natural light with access to a terrace overlooking the private garden to the rear of the property. The modern kitchen comes complete with high-spec fitted handmade Italian units and is also situated to the rear with direct access to the terrace and gardens below. On this floor, you also have a guest bathroom which is also tastefully renovated.

On the lower ground floor you have three large bedrooms, a modernised family bathroom to serve this floor, separate utility and access to the street through a private entrance. The master bedroom benefits from bespoke, built-in storage, en-suite shower room and access onto the garden.

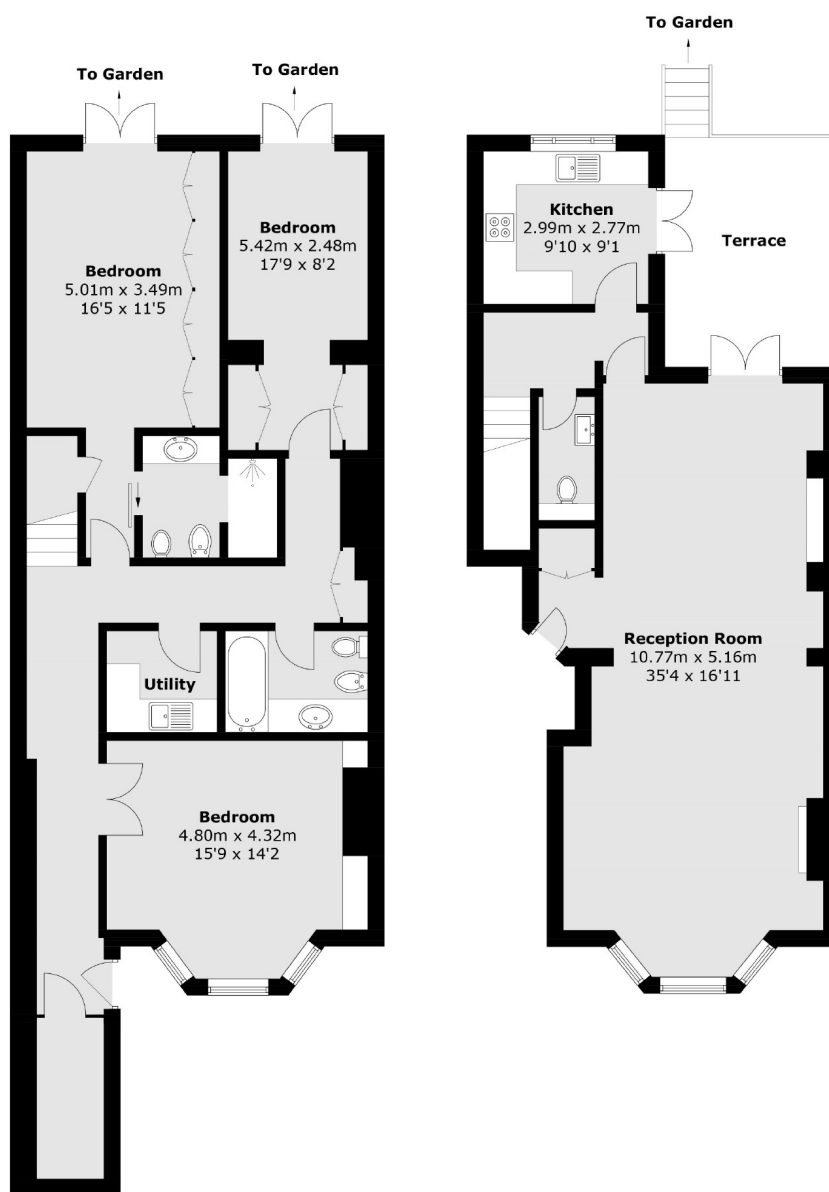
This exceptional and incredibly well-presented home is offered to the market with a long lease and no onward chain.

Westwick Gardens is a quiet, tree-lined street in the heart of Brook Green. The property is incredibly well-located for Brook Green's array of eclectic groceries and independent restaurants. The property is also under a mile from the popular Westfield Shopping Centre. Goldhawk Road and Hammersmith Tube Stations are also under a mile away offering excellent connections in and out of the city. Green spaces of Holland Park and Brook Green are a short walk away.

• Three Bedrooms • Long Lease • No Onward Chain • Private Garden & Terrace • Quiet Tree-Lined Street • High Ceilings & Period Features •

# FLETCHERS

ESTATE AGENTS



**Lower Ground Floor**

**Ground Floor**

Total area (approx.): 161.8 sq. m (1,741.6 sq. ft)  
Terrace: 13.0 sq. m (139.9 sq. ft)

Fletchers Brook Green Sales  
144 Shepherds Bush Road, Hammersmith, London, W6 7PB  
020 7603 1415  
brookgreensales@fletcherestates.com

Energy Rating: C. We aim to make our particulars both accurate and reliable. However they are not guaranteed; nor do they form part of an offer or contract. If you require clarification on any points then please contact us, especially if you're traveling some distance to view. Please note that appliances and heating systems have not been tested and therefore no warranties can be given as to their good working order.